

CLEVELAND INFILL PROTOTYPE HOUSE

GREEN BUILT HOMES, LTD

2324 LAKESIDE AVE. CLEVELAND OHIO 44114

BUILDING AREAS

BASEMENT	1056 GROSS SQ FT
FIRST FLOOR	1056 GROSS SQ FT
SECOND FLOOR	756 GROSS SQ FT

LIST OF DRAWINGS

A-1	FOUNDATION PLAN AND SECTION
A-2	BASEMENT PLAN / FIRST AND SECOND FLOOR FRAMING PLANS
A-3	FIRST FLOOR PLAN / WALL FRAMING ELEVATIONS AND DETAILS
A-4	SECOND FLOOR PLAN / WALL FRAMING ELEVATIONS
A-5	ROOF PLAN AND ROOF FRAMING PLAN
A-6	BUILDING ELEVATIONS AND WINDOW SCHEDULE
A-7	BUILDING SECTION BB
A-8	BUILDING SECTION CC / WALL SECTION A

Important Note About House Plans

House Plans are fully integrated sets of construction drawings created by BSC for specific locations and climates. The sets include floor plans, detailed framing plans and wall framing elevations, exterior elevations and sections, advanced framing and enclosure details, as well as mechanical and electrical plans.

Through our multi-disciplinary team approach, interior, framing and mechanical layouts are designed and coordinated well before the start of construction. Duct layouts are not only shown on the mechanical plan but on the framing plan as well. This level of coordination limits changes made in the field and helps to ensure assemblies and systems are installed as designed.

Please Note

Please note that House Plans are posted as examples of high performance housing designs and are not to be used for construction. If you wish to use these plans as a basis for a house design, you should keep the following in mind:

- Most state and local governments require that a set of drawings be stamped by an architect licensed to practice locally
- Foundation plans need to be developed for the specific site and climate
- While these drawings were developed to be compliant with the then-current IRC code, you will need to meet your local building code requirements
- Finally, since materials and products specified in the drawings may not be available in all locations, you will need to carefully research any substitutions to verify compatibility and performance.

BUILDING SCIENCE CORPORATION

70 MAIN STREET WESTFORD, MASSACHUSETTS 01886

18 APRIL 2001

3/23/01 SUBMITTED FOR REVIEW
4/18/01 SUBMITTED FOR REVIEW

BUILDING SCIENCE CORPORATION
70 MAIN STREET WESTFORD, MASSACHUSETTS 01886
P: 978-589-5100 F: 978-589-5103

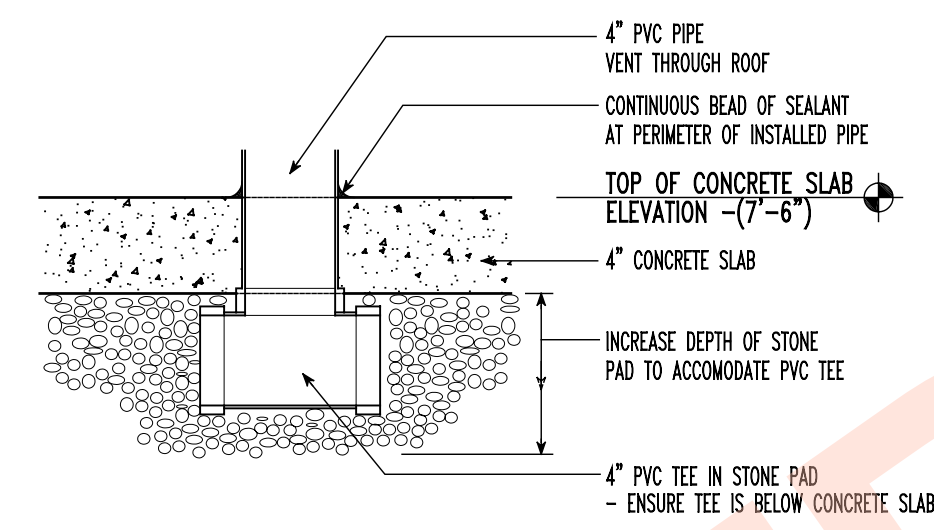
CLEVELAND INFILL PROTOTYPE HOUSE
GREEN BUILT HOMES, LTD
2324 LAKESIDE AVE. CLEVELAND OHIO 44114

FOUNDATION PLAN and
FOUNDATION SECTION
SCALE AS NOTED

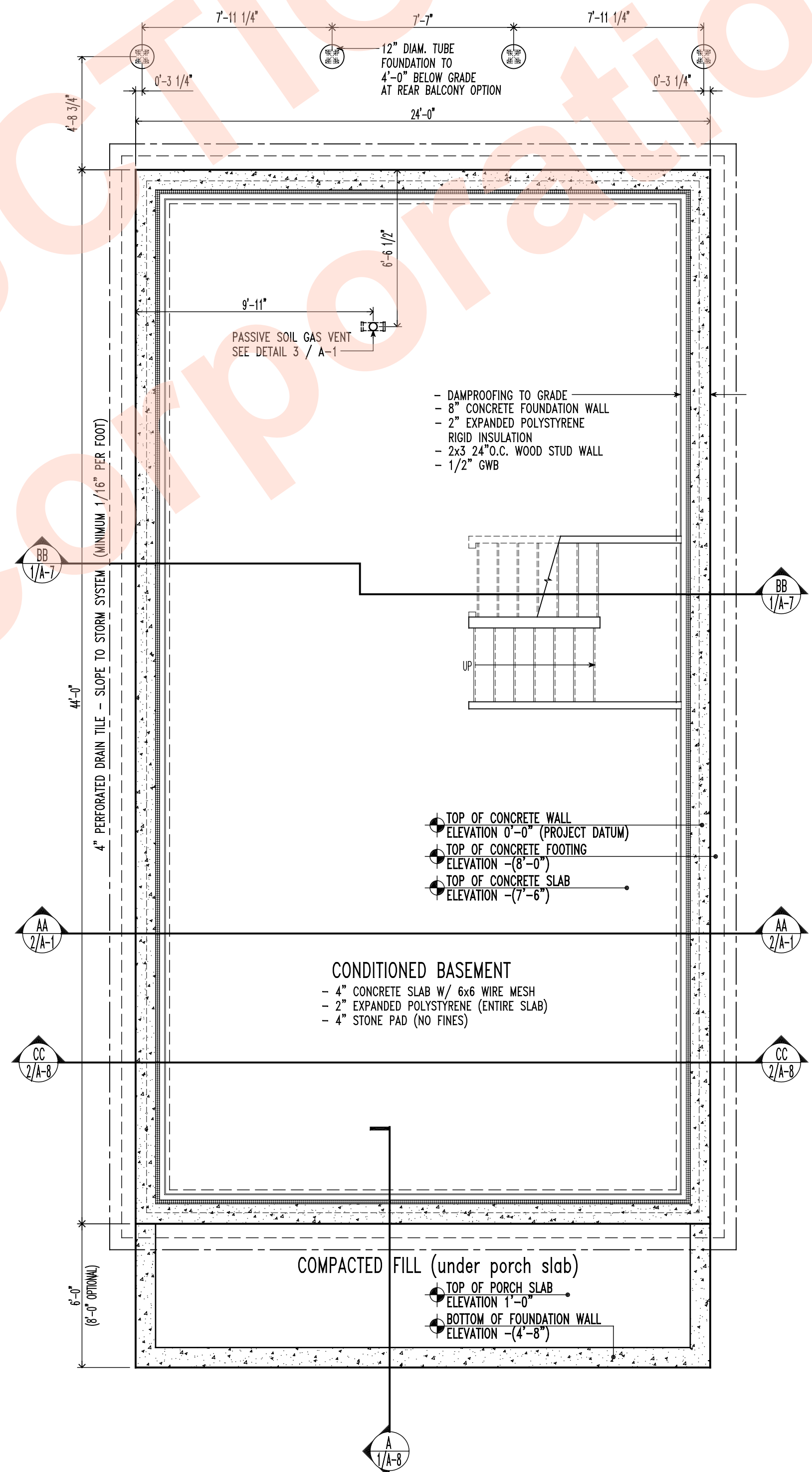
COPYRIGHT © 2001
BUILDING SCIENCE
CORPORATION

A-1

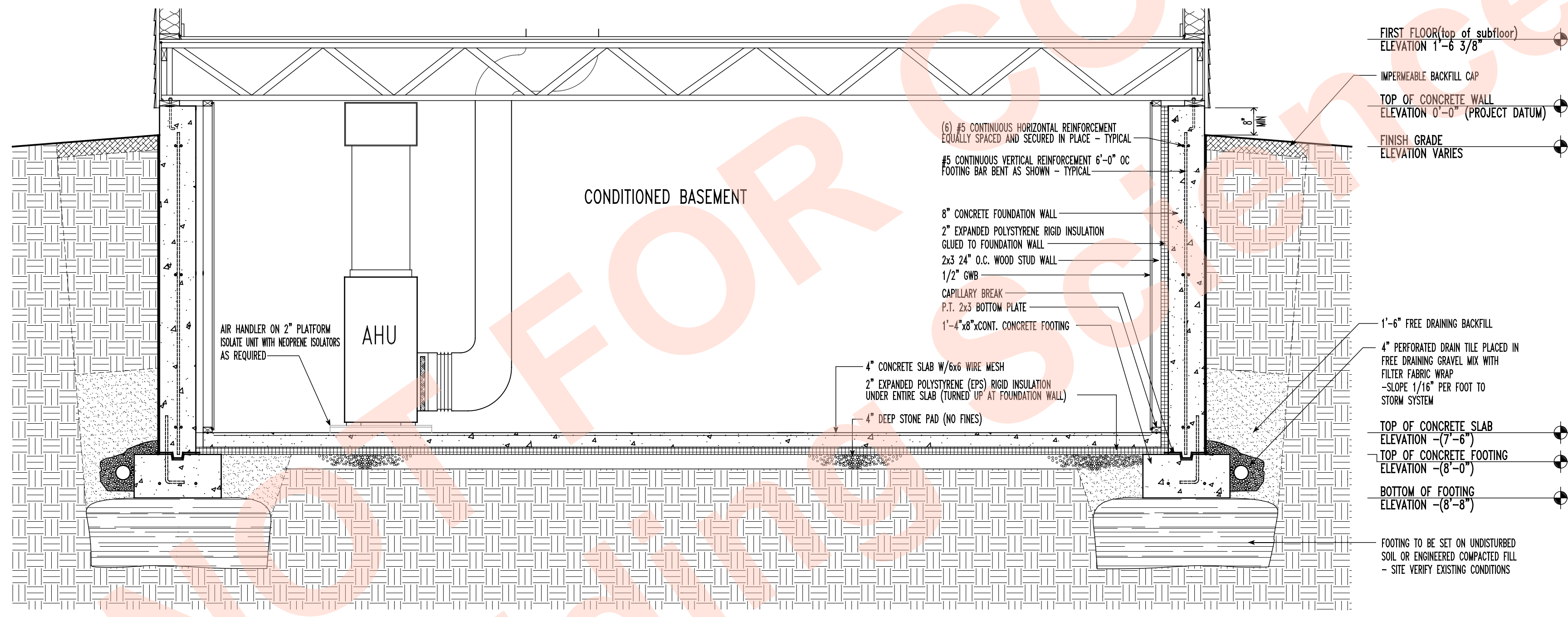
FILE: GB_1608_09H3(CD)



3 DETAIL AT SOIL GAS VENT
SCALE 1 1/2" = 1'-0"



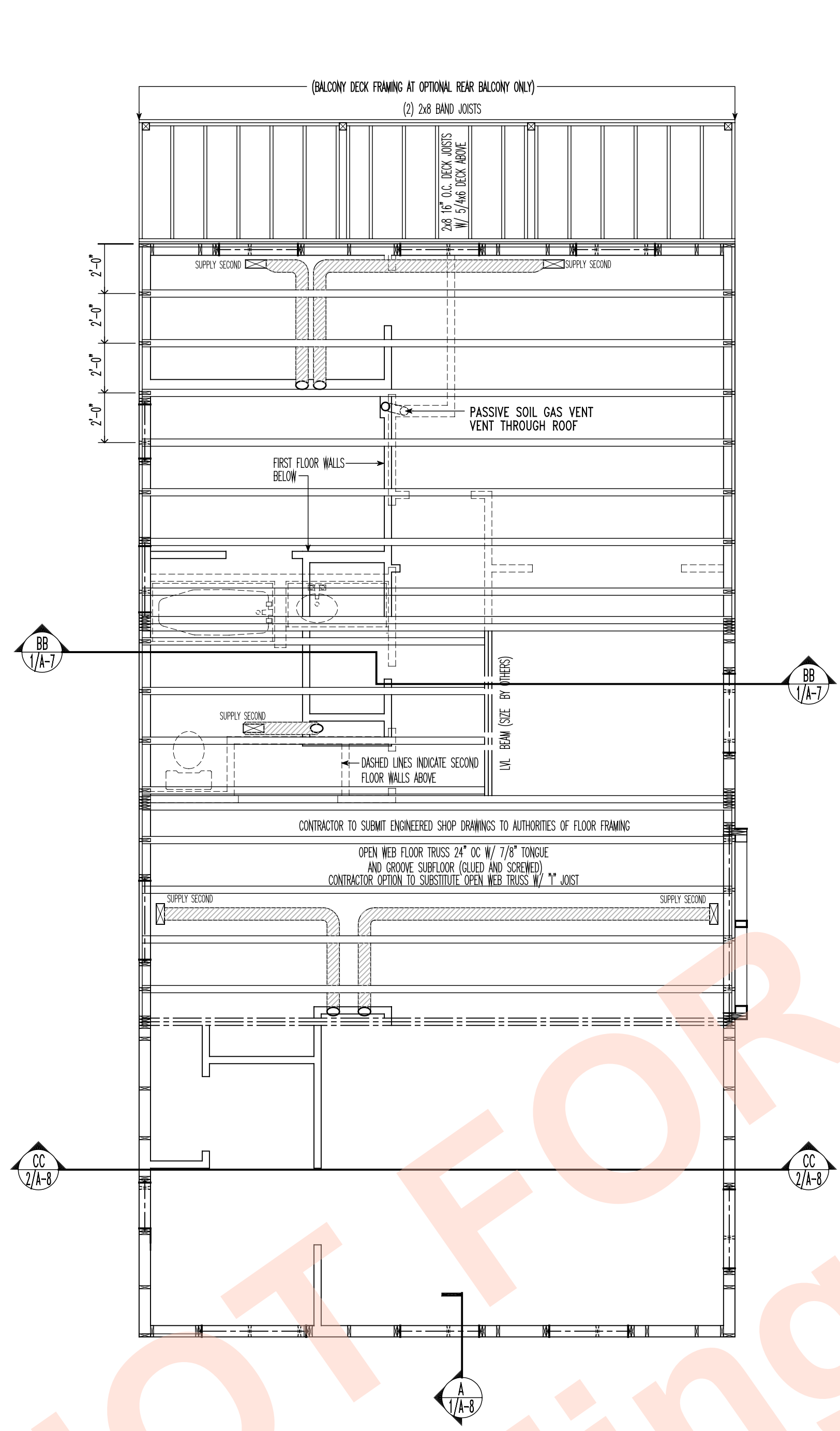
1 FOUNDATION PLAN
SCALE 1/4" = 1'-0"



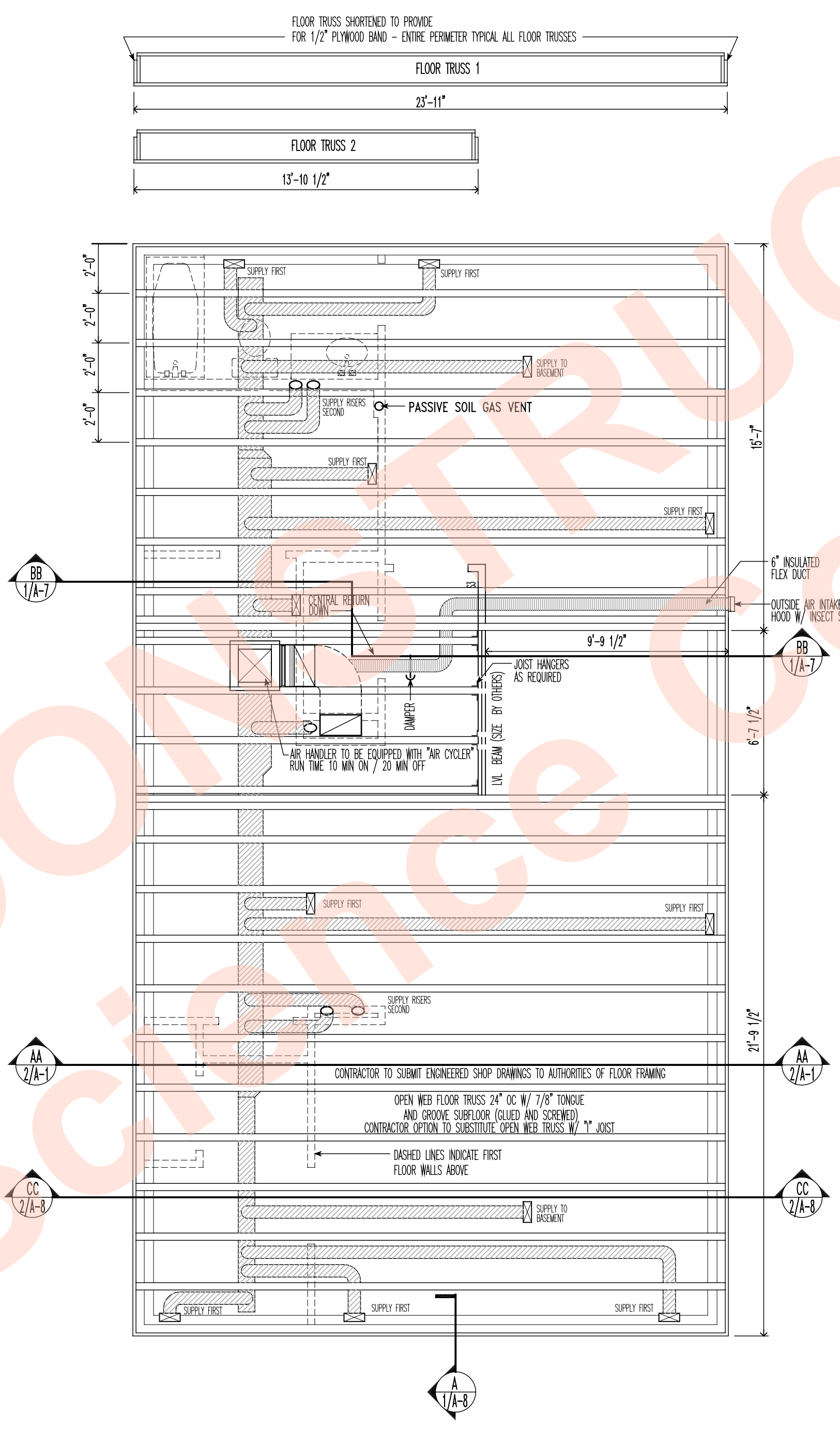
2 FOUNDATION SECTION
SCALE 1/2" = 1'-0"

© Buillan

FOR CONSTRUCTION

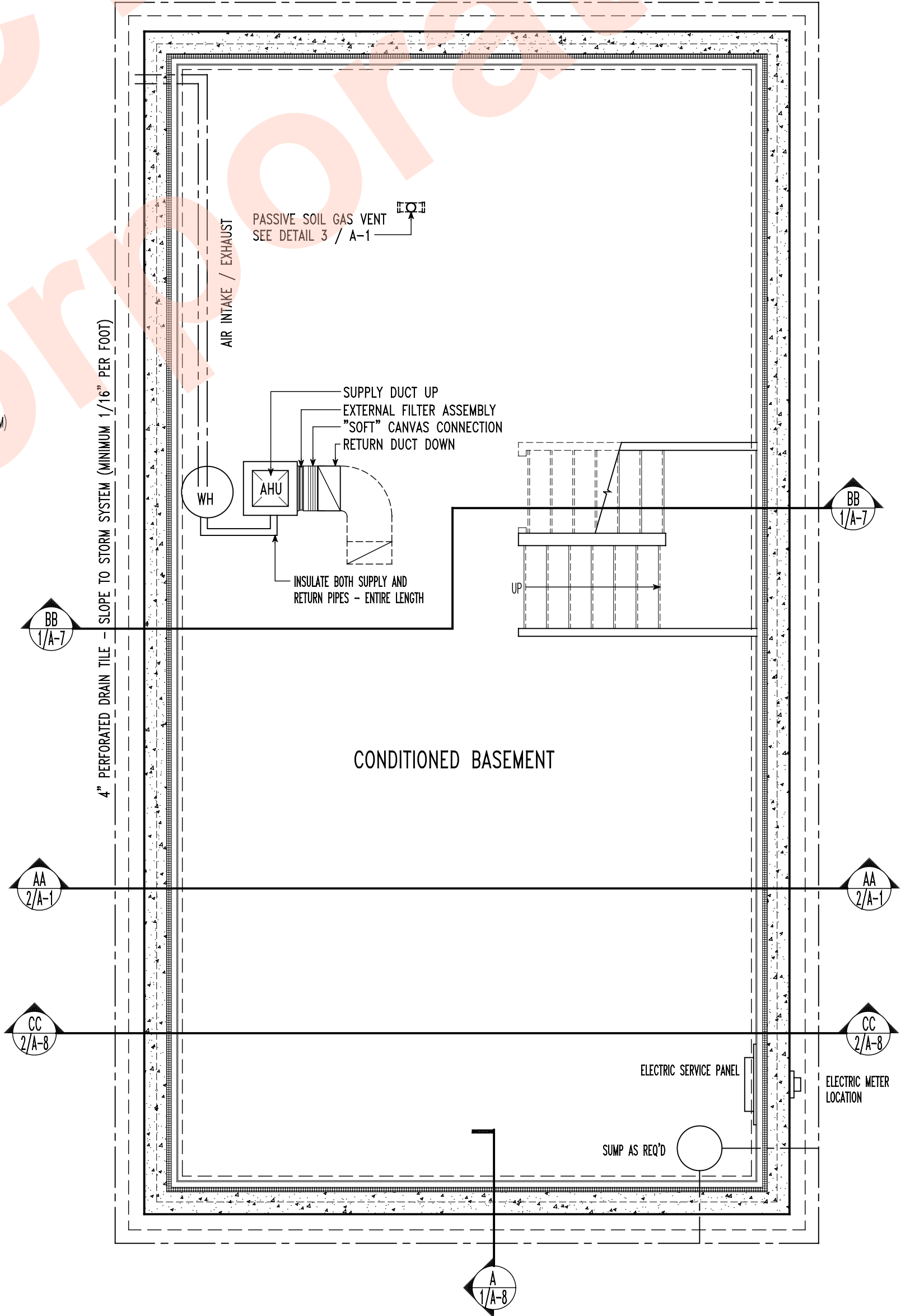


3 | SECOND FLOOR FRAMING PLAN
SCALE 1/4" = 1'-0"



2 | FIRST FLOOR FRAMING PLAN
SCALE 1/4" = 1'-0"

GENERAL NOTES
 HVAC DUCT LAYOUT PROVIDED TO SHOW DESIGN INTENT
 HVAC CONTRACTOR TO PROVIDE FINAL SIZING AND LAYOUT
 NO DUCTS LOCATED IN EXTERIOR WALLS OR UNCONDITIONED ATTIC SPACES
 DESIGN HEAT LOAD 28,000 BTUH WITH EXTERIOR DESIGN TEMP. 5 deg F. / INTERIOR DESIGN TEMP. 70 deg F.
 DESIGN COOLING LOAD 16,600 BTUH WITH EXTERIOR DESIGN TEMP. 88 deg F. / INTERIOR DESIGN TEMP. 78 deg F.



1 | BASEMENT PLAN
SCALE 1/4" = 1'-0"

NOT FOR CONSTRUCTION

3/23/01 SUBMITTED FOR REVIEW
 4/18/01 SUBMITTED FOR REVIEW

BUILDING SCIENCE CORPORATION
 70 MAIN STREET WESTFORD, MASSACHUSETTS 01886
 P: 978-589-5100 F: 978-589-5103

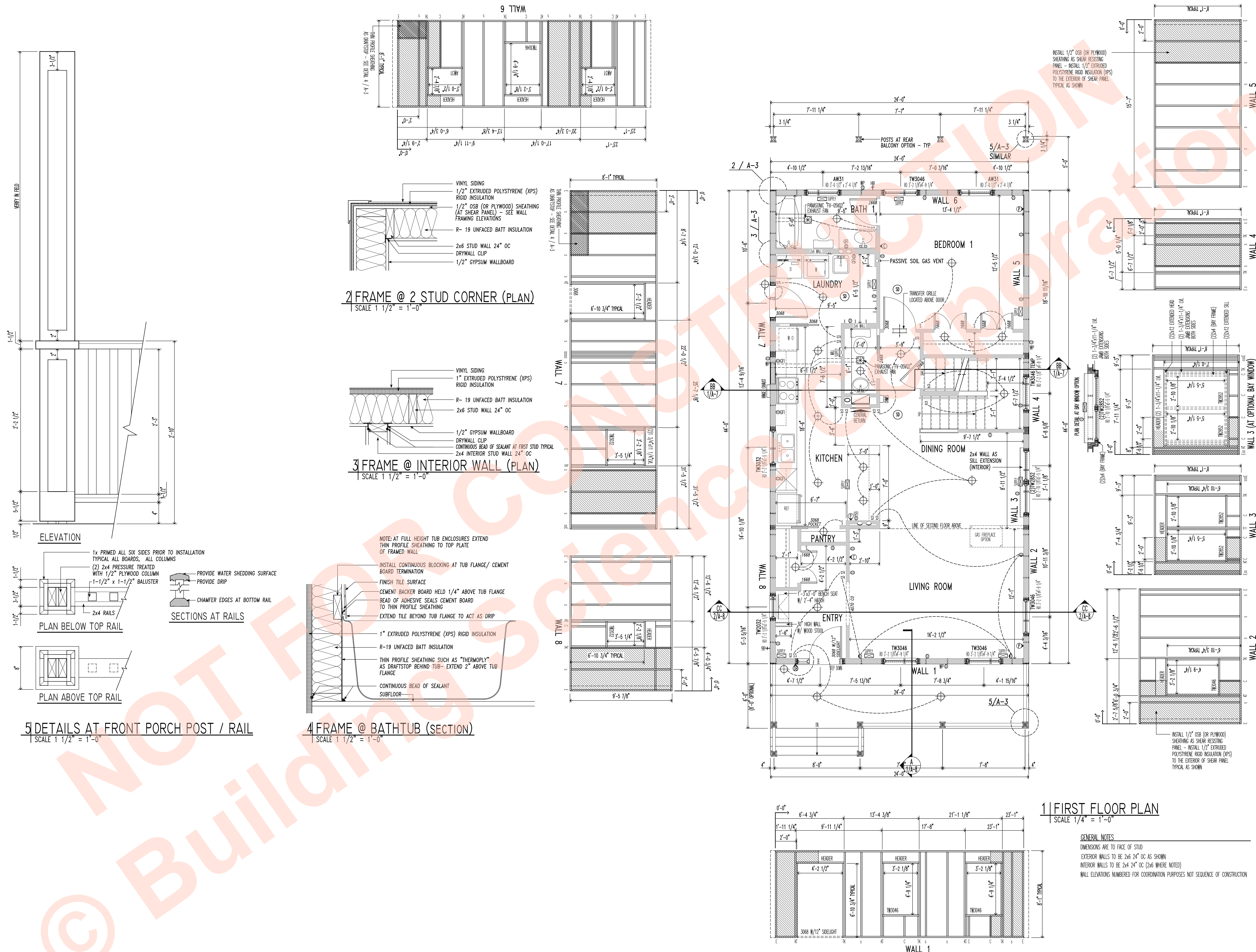
CLEVELAND INFILL PROTOTYPE HOUSE
GREEN BUILT HOMES, LTD
 2324 LAKESIDE AVE. CLEVELAND OHIO 44114

BASEMENT PLAN /
 FIRST and SECOND FLOOR
 FRAMING PLANS
 SCALE AS NOTED

COPYRIGHT © 2001
 BUILDING SCIENCE
 CORPORATION

A-2

FILE: GB_1608_09H3(cd)



VINYL SIDING
 1/2" EXTRUDED POLYSTYRENE (XPS) RIGID INSULATION
 1/2" OSB (OR PLYWOOD) SHEATHING (AT SHEAR PANELS) - SEE WALL FRAMING ELEVATIONS
 R-19 UNFACED BATT INSULATION
 2x6 STUD WALL 24" OC
 DRYWALL CLIP
 1/2" GYPSUM WALLBOARD

2 FRAME @ 2 STUD CORNER (PLAN)
 SCALE 1 1/2" = 1'-0"

VINYL SIDING
 1" EXTRUDED POLYSTYRENE (XPS) RIGID INSULATION
 R-19 UNFACED BATT INSULATION
 2x6 STUD WALL 24" OC
 1/2" GYPSUM WALLBOARD
 DRYWALL CLIP
 CONTINUOUS BEAD OF SEALANT AT FIRST STUD TYPICAL
 2x4 INTERIOR STUD WALL 24" OC

3 FRAME @ INTERIOR WALL (PLAN)
 SCALE 1 1/2" = 1'-0"

1x PRIMED ALL SIX SIDES PRIOR TO INSTALLATION
 TYPICAL ALL BOARDS, ALL COLUMNS
 (2) 2x4 PRESSURE TREATED WITH 1/2" PLYWOOD COLUMN
 1-1/2" x 1-1/2" BALUSTER

PROVIDE WATER SHEDDING SURFACE
 PROVIDE DRIP

CHAMFER EDGES AT BOTTOM RAIL

5 DETAILS AT FRONT PORCH POST / RAIL
 SCALE 1 1/2" = 1'-0"

NOTE: AT FULL HEIGHT TUB ENCLOSURES EXTEND THIN PROFILE SHEATHING TO TOP PLATE OF FRAMED WALL

INSTALL CONTINUOUS BLOCKING AT TUB FLANGE / CEMENT BOARD TERMINATION

FINISH TILE SURFACE
 CEMENT BACKER BOARD HELD 1/4" ABOVE TUB FLANGE
 BEAD OF ADHESIVE SEALS CEMENT BOARD TO THIN PROFILE SHEATHING
 EXTEND TILE BEYOND TUB FLANGE TO ACT AS DRIP

1" EXTRUDED POLYSTYRENE (XPS) RIGID INSULATION
 R-19 UNFACED BATT INSULATION
 THIN PROFILE SHEATHING SUCH AS "THERMOPLY" AS DRAFTSTOP BEHIND TUB - EXTEND 2" ABOVE TUB FLANGE
 CONTINUOUS BEAD OF SEALANT SUBFLOOR

4 FRAME @ BATHTUB (SECTION)
 SCALE 1 1/2" = 1'-0"

1 FIRST FLOOR PLAN
 SCALE 1/4" = 1'-0"

GENERAL NOTES:
 DIMENSIONS ARE TO FACE OF STUD
 EXTERIOR WALLS TO BE 2x6 24" OC AS SHOWN
 INTERIOR WALLS TO BE 2x4 24" OC (2x6 WHERE NOTED)
 WALL ELEVATIONS NUMBERED FOR COORDINATION PURPOSES NOT SEQUENCE OF CONSTRUCTION

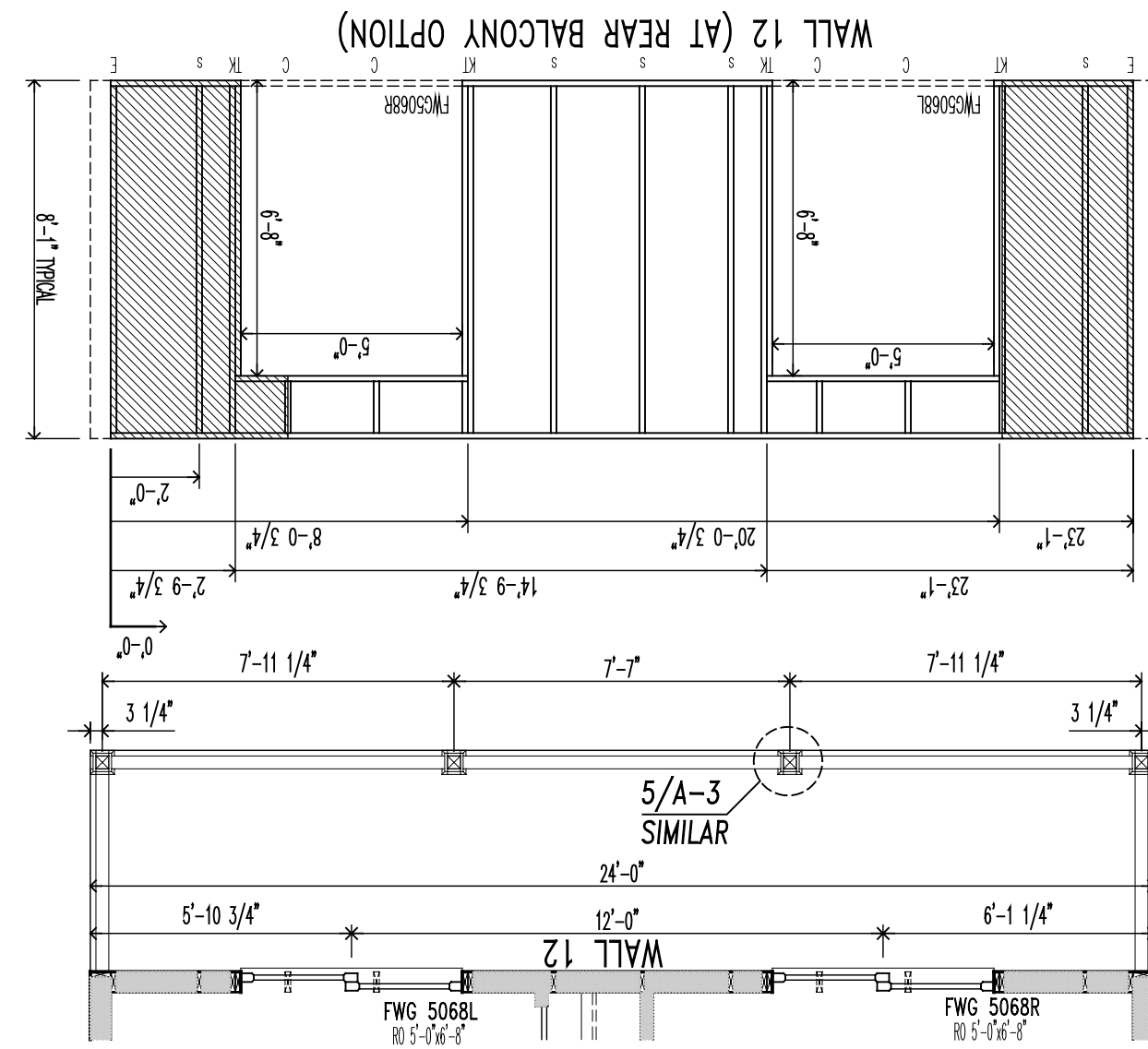
3/23/01 SUBMITTED FOR REVIEW
 4/18/01 SUBMITTED FOR REVIEW

BUILDING SCIENCE CORPORATION
 70 MAIN STREET WESTFORD, MASSACHUSETTS 01886
 P: 978-589-5103
 F: 978-589-5103

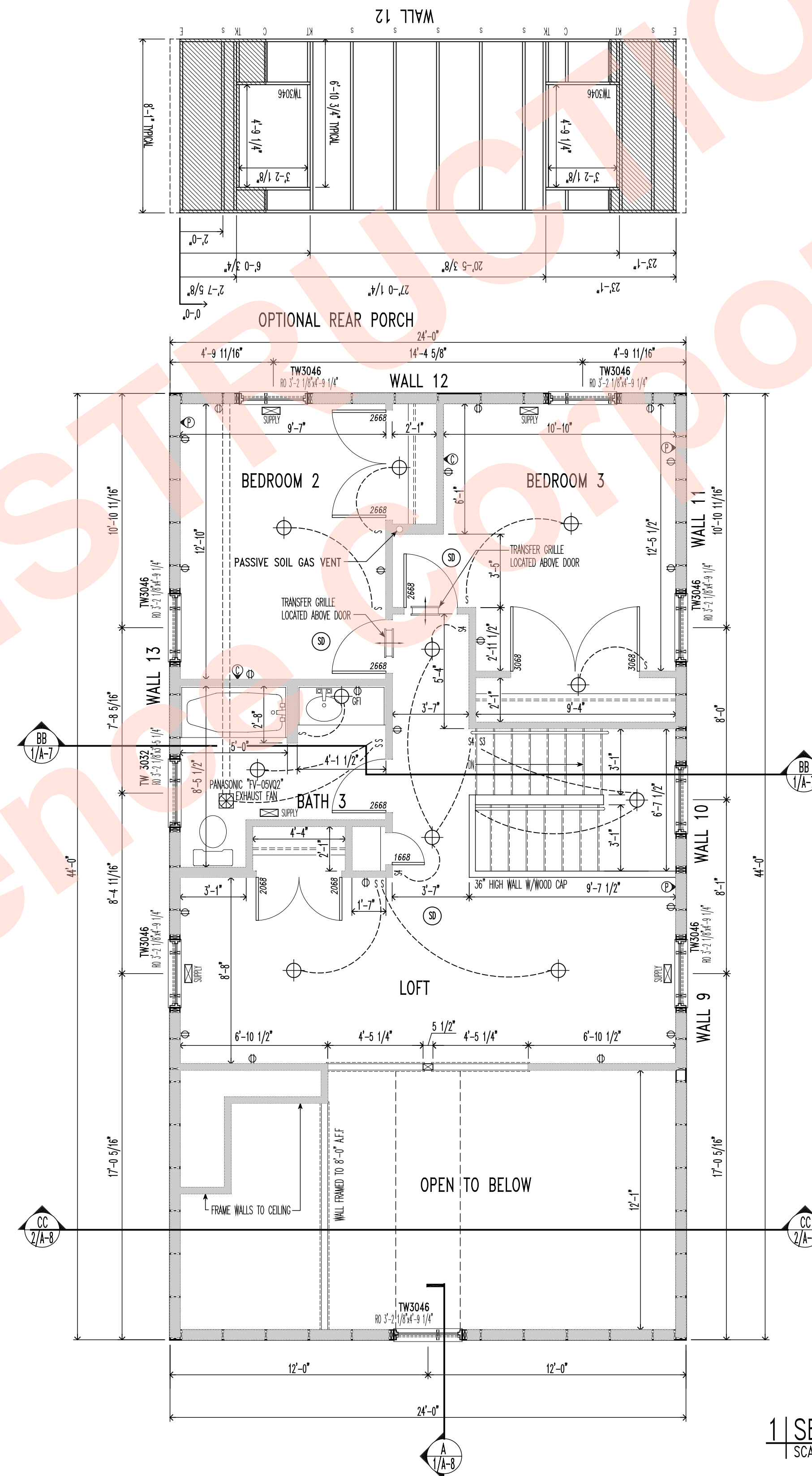
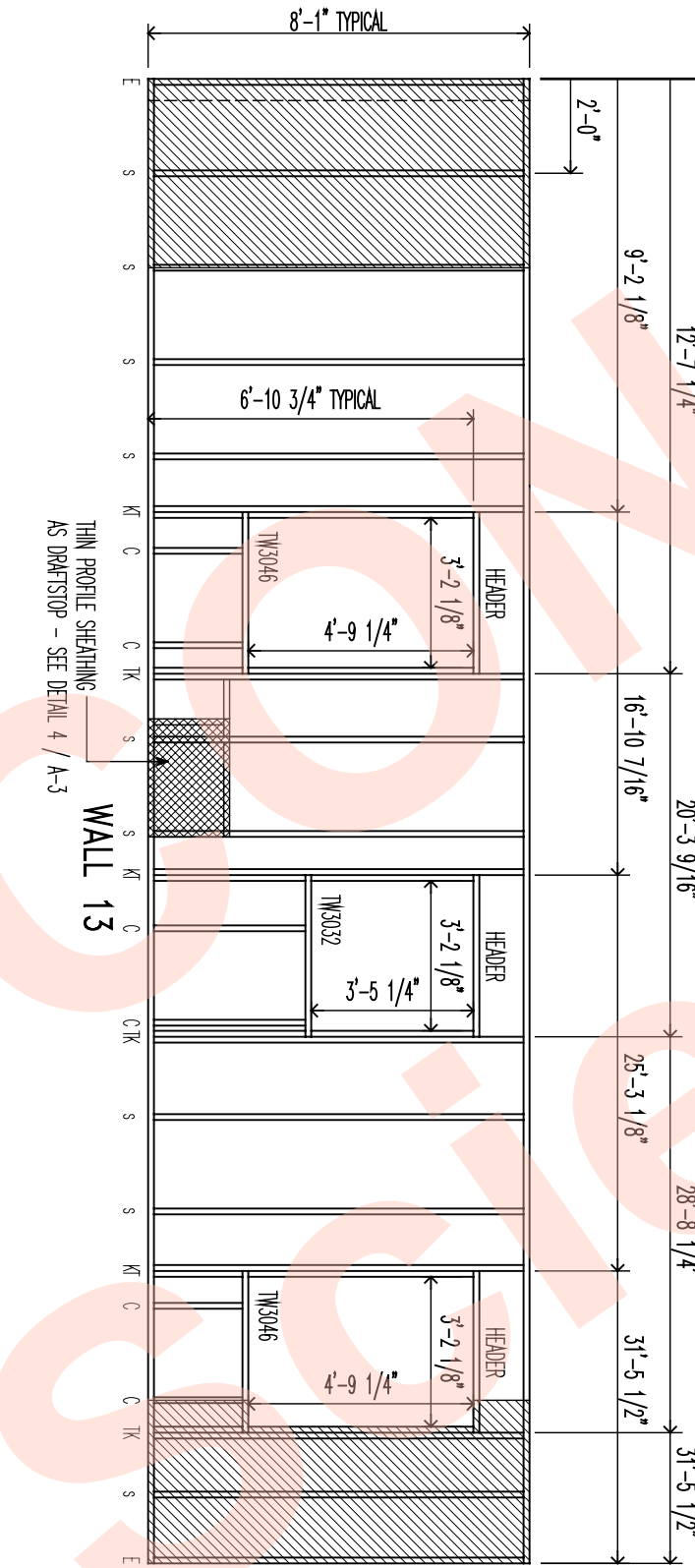
CLEVELAND INFILL PROTOTYPE HOUSE
GREEN BUILT HOMES, LTD
 2324 LAKESIDE AVE. CLEVELAND OHIO 44114

FIRST FLOOR PLAN / WALL FRAMING ELEVATIONS and DETAILS
 SCALE AS NOTED

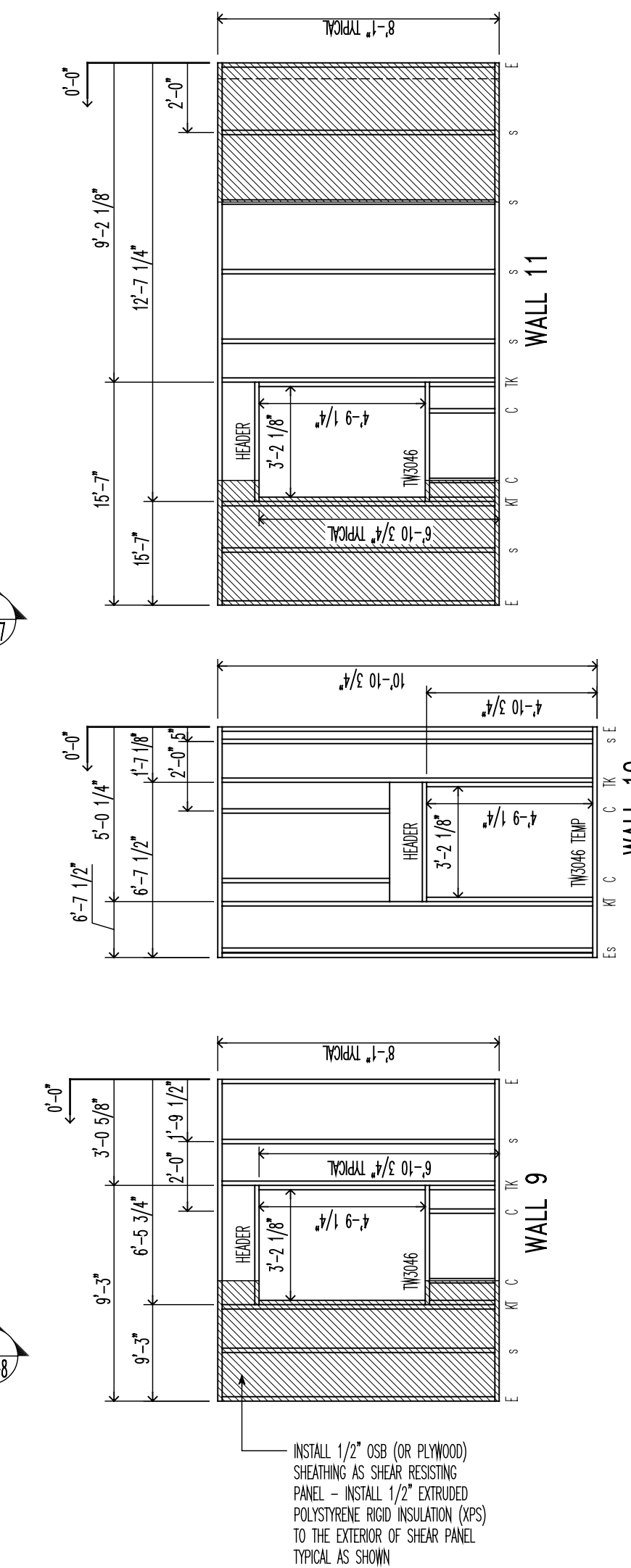
COPYRIGHT © 2001 BUILDING SCIENCE CORPORATION
A-3
 FILE: GB_1608_09H3(c)



2 | PARTIAL SECOND FLOOR PLAN (AT OPTIONAL BALCONY)
SCALE 1/4" = 1'-0"



1 | SECOND FLOOR PLAN
SCALE 1/4" = 1'-0"



NOT FOR CONSTRUCTION

© Building

3/23/01 SUBMITTED FOR REVIEW
4/18/01 SUBMITTED FOR REVIEW

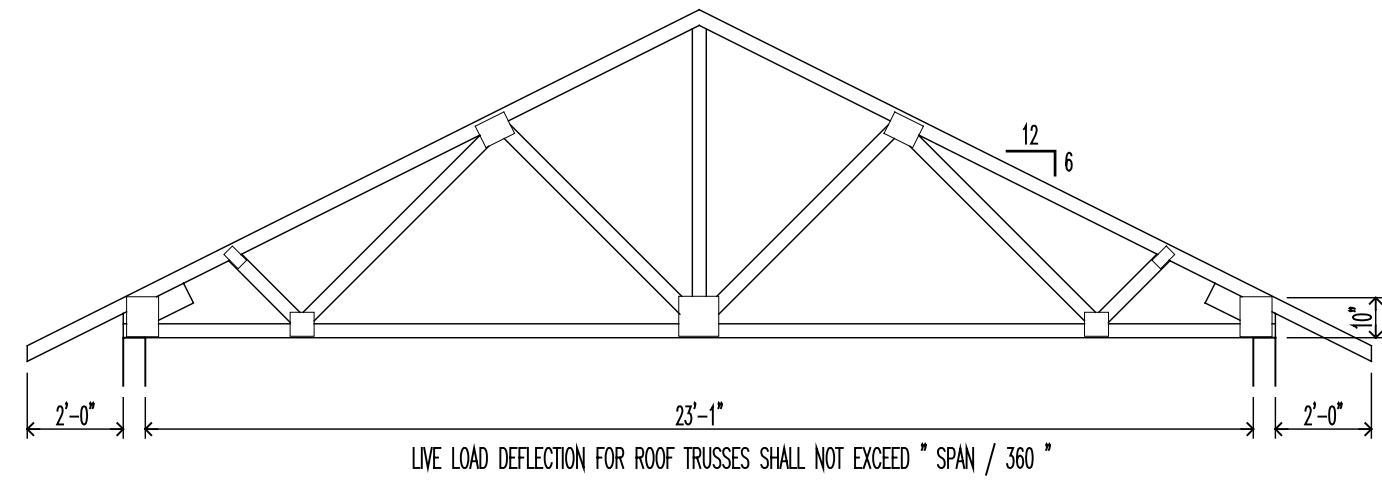
BUILDING SCIENCE CORPORATION
70 MAIN STREET WESTFORD, MASSACHUSETTS 01886
P: 978-589-5100 F: 978-589-5103

CLEVELAND INFILL PROTOTYPE HOUSE
GREEN BUILT HOMES, LTD
2324 LAKESIDE AVE. CLEVELAND OHIO 44114

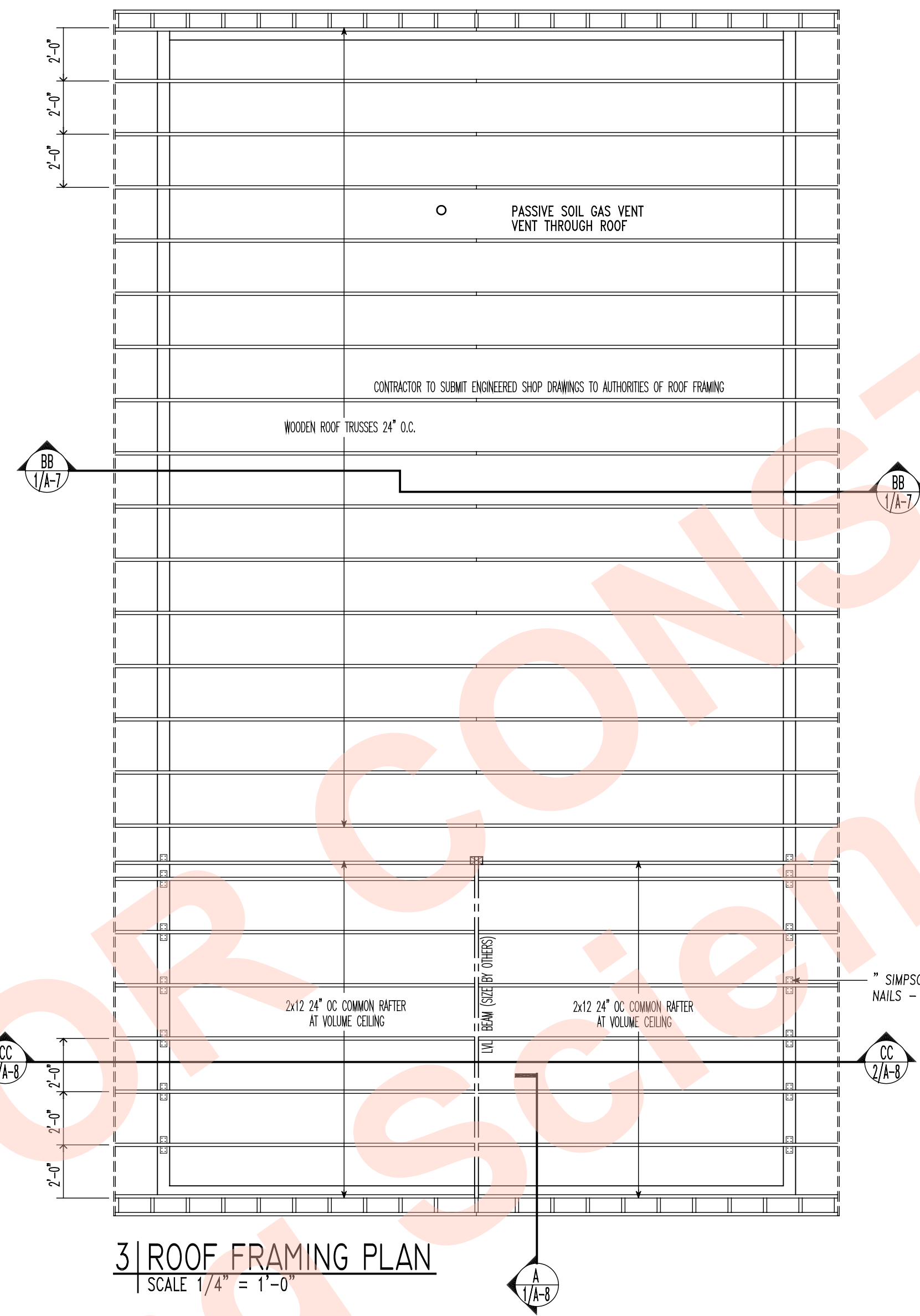
SECOND FLOOR PLAN and
WALL FRAMING ELEVATIONS
SCALE AS NOTED

COPYRIGHT © 2001
BUILDING SCIENCE
CORPORATION

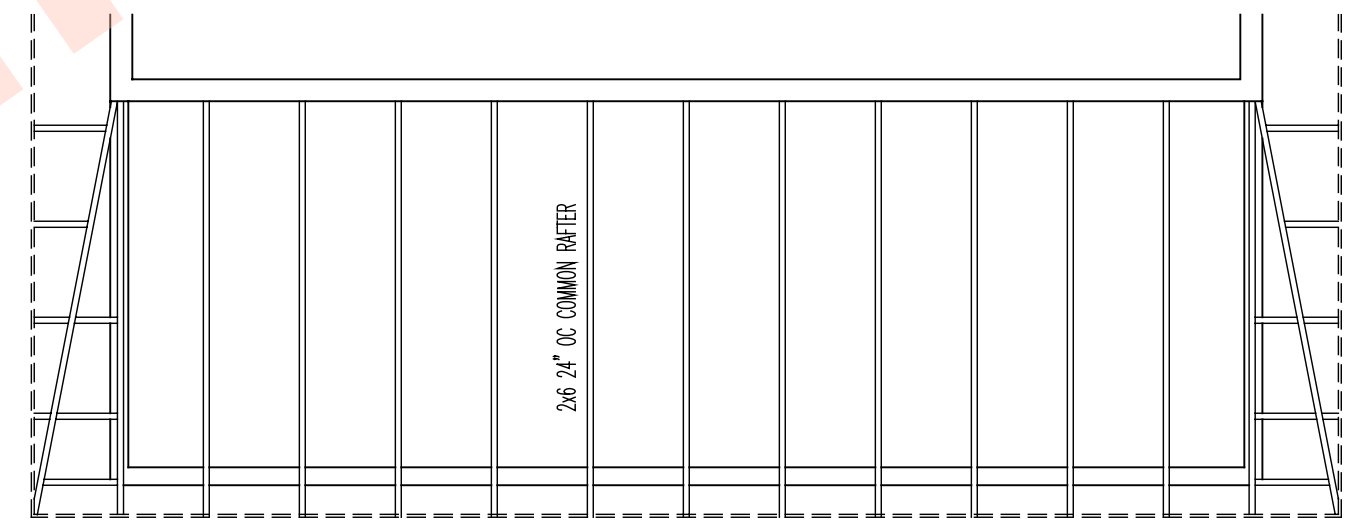
A-4
FILE: GB_1608_09H3(c)



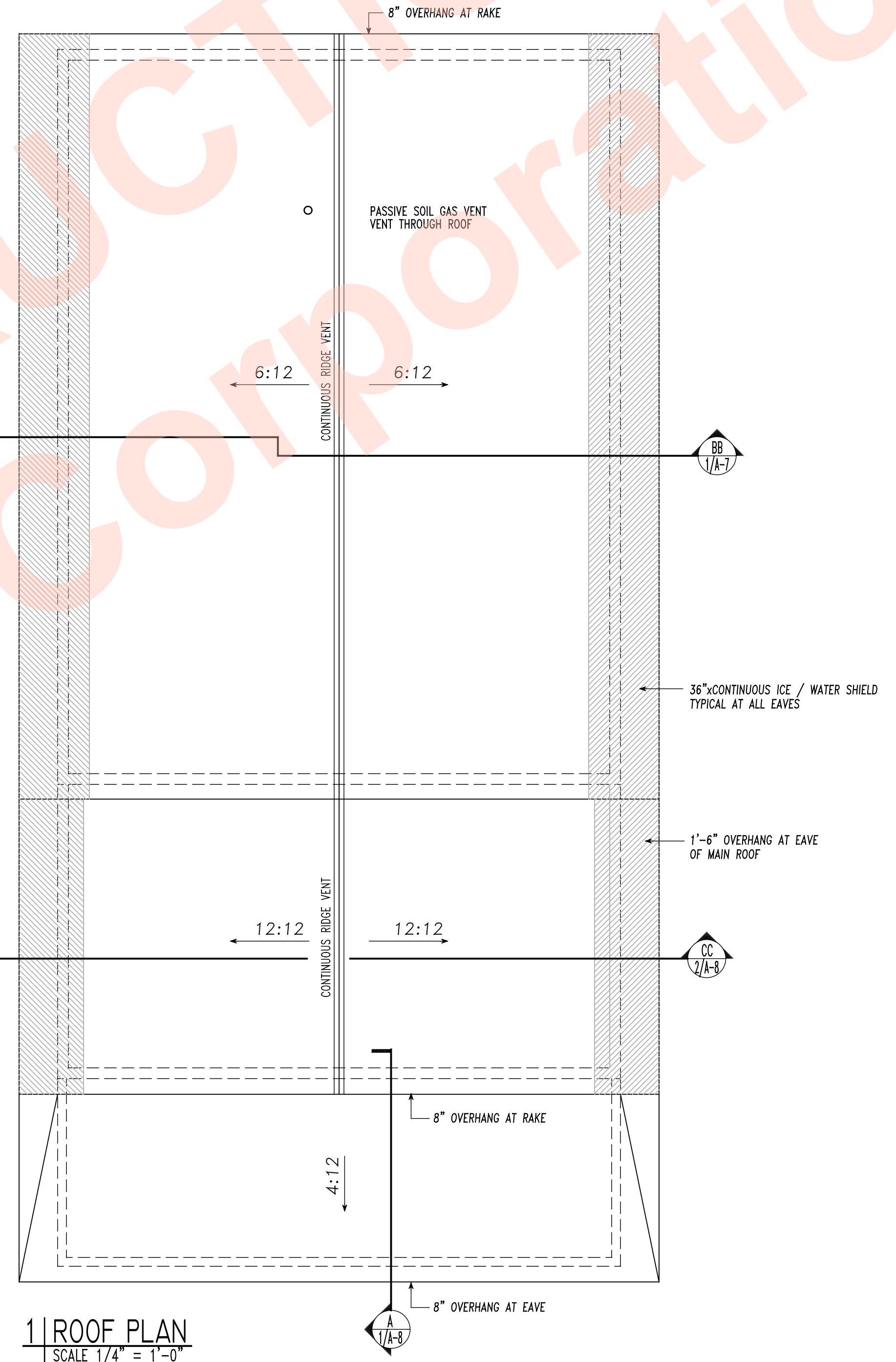
4 | ROOF TRUSS SCHEDULE
SCALE 1/4" = 1'-0"



3 | ROOF FRAMING PLAN
SCALE 1/4" = 1'-0"



2 | PORCH ROOF FRAMING PLAN
SCALE 1/4" = 1'-0"



1 | ROOF PLAN
SCALE 1/4" = 1'-0"

NOT FOR CONSTRUCTION
© Building Science Corporation

3/23/01 SUBMITTED FOR REVIEW
4/18/01 SUBMITTED FOR REVIEW

BUILDING SCIENCE CORPORATION
70 MAIN STREET WESTFORD, MASSACHUSETTS 01886
P: 978-589-5103 F: 978-589-5103

CLEVELAND INFILL PROTOTYPE HOUSE
GREEN BUILT HOMES, LTD
2324 LAKESIDE AVE. CLEVELAND OHIO 44114

ROOF PLAN and
ROOF FRAMING PLAN
SCALE AS NOTED

COPYRIGHT © 2001
BUILDING SCIENCE
CORPORATION

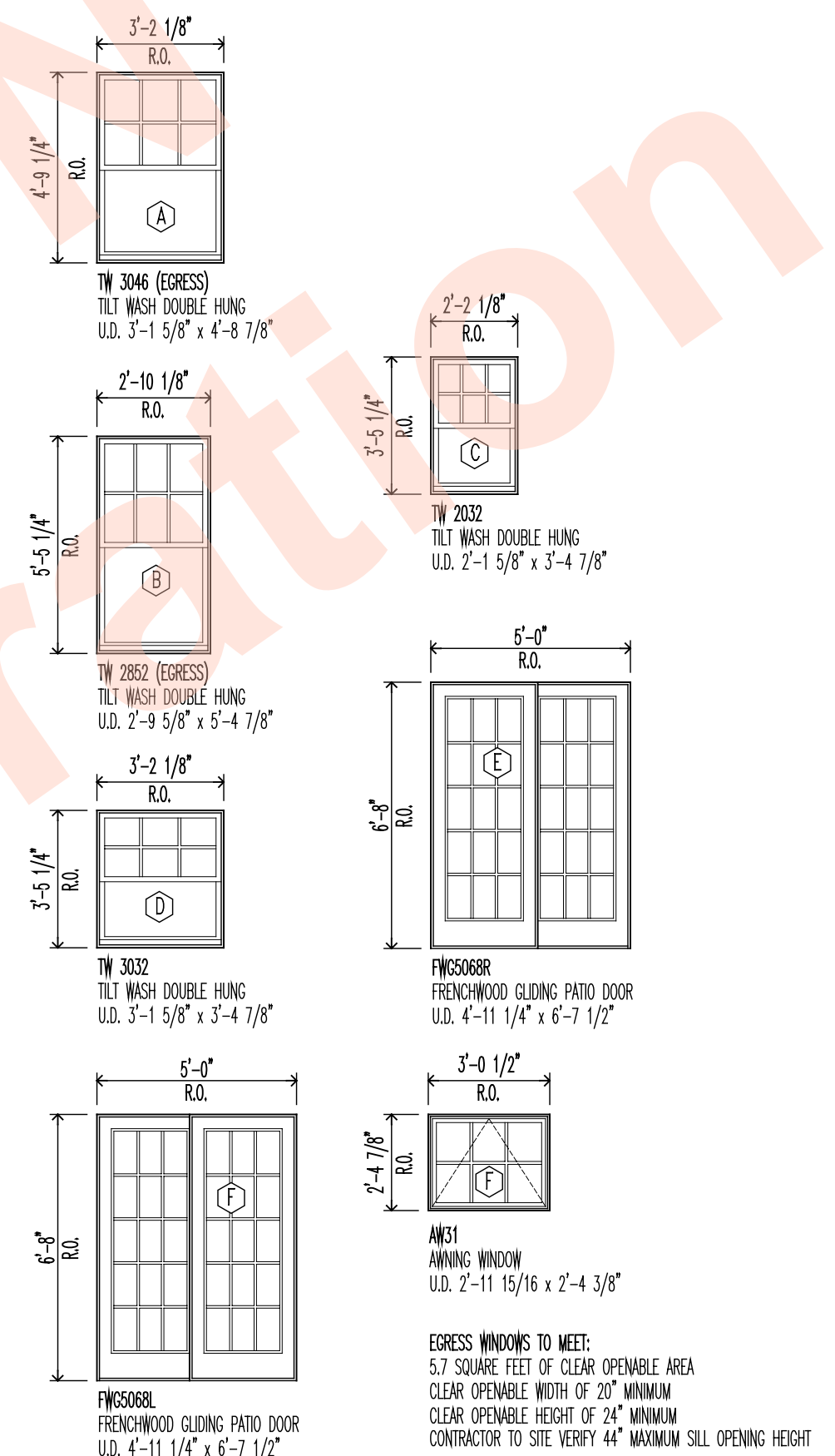
A-5
FILE: GB_1608_09H3(cd)



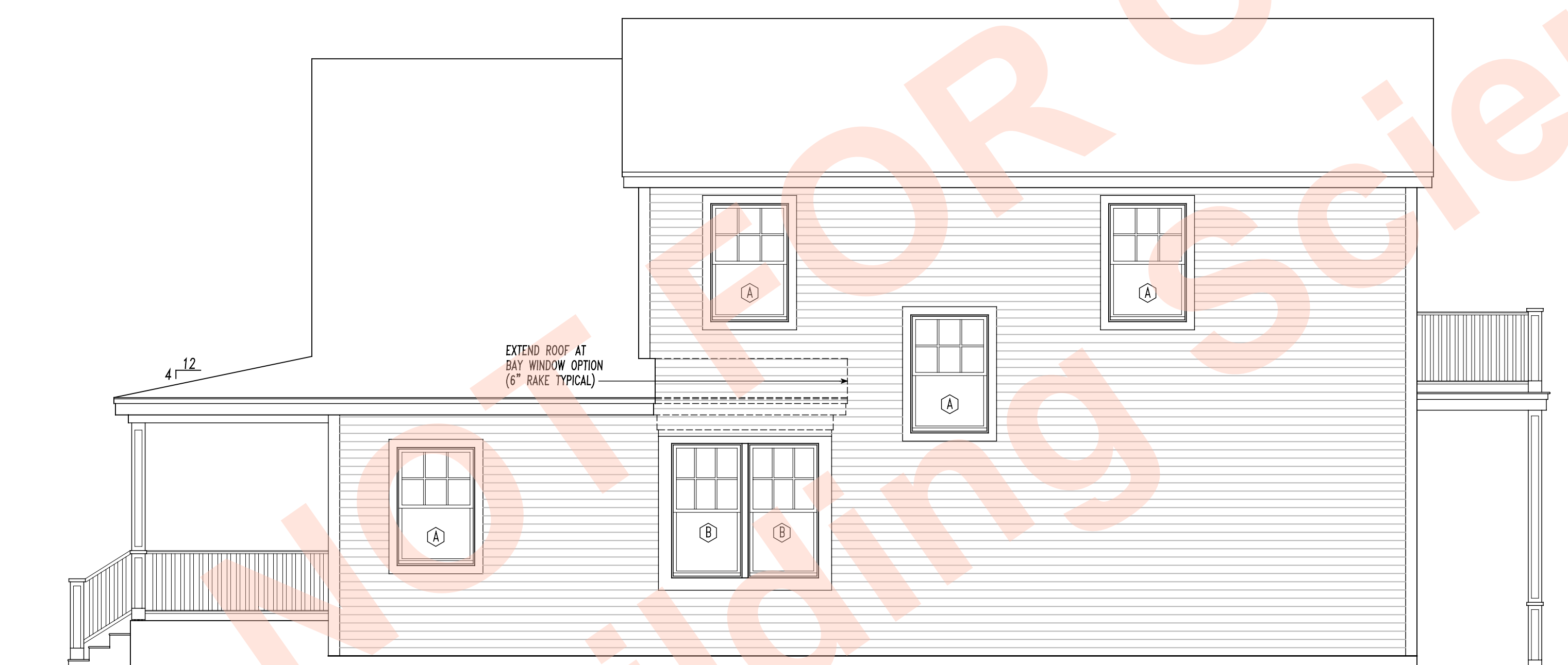
5 LEFT SIDE ELEVATION
SCALE 1/4" = 1'-0"



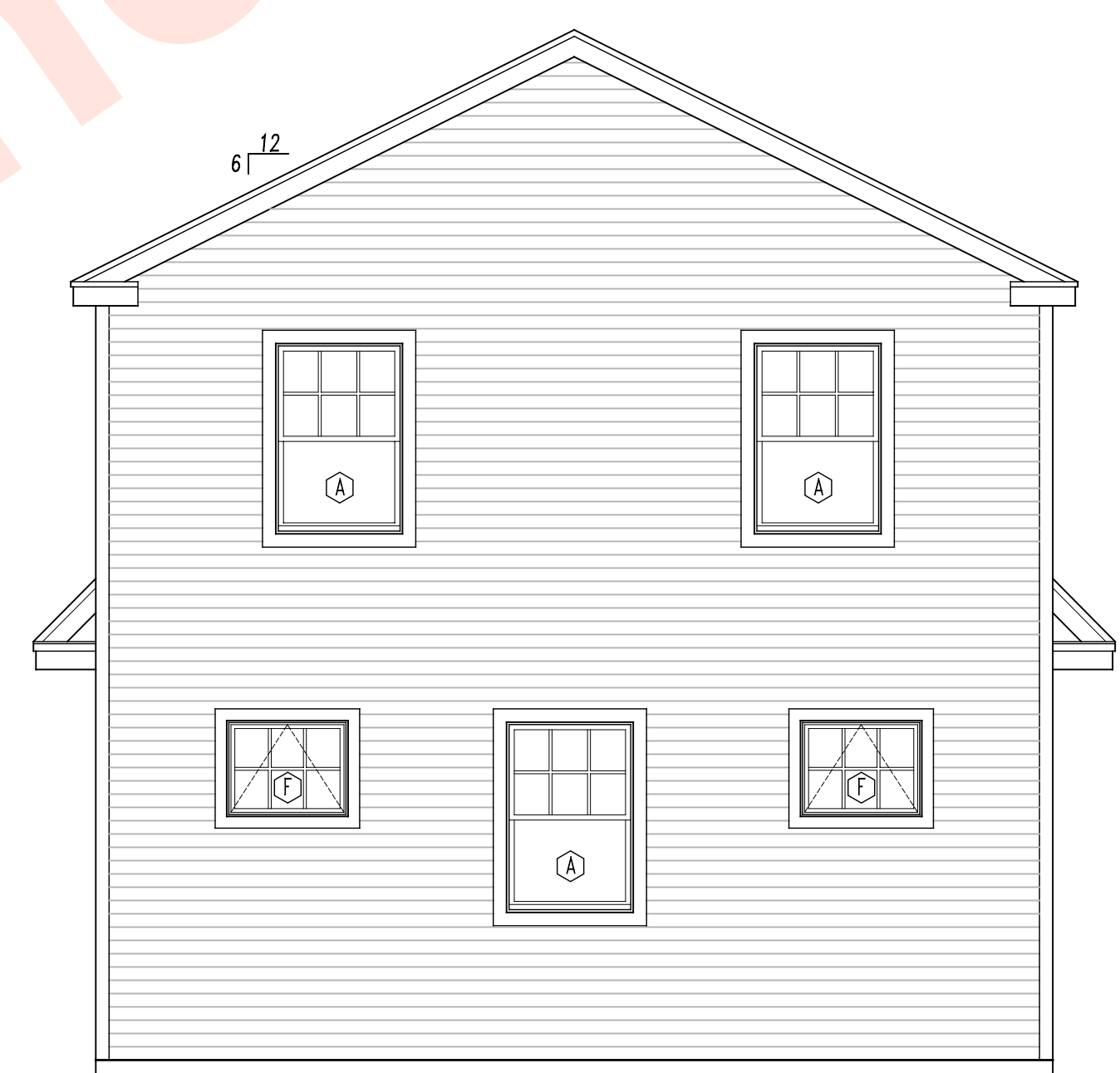
3 FRONT ELEVATION
SCALE 1/4" = 1'-0"



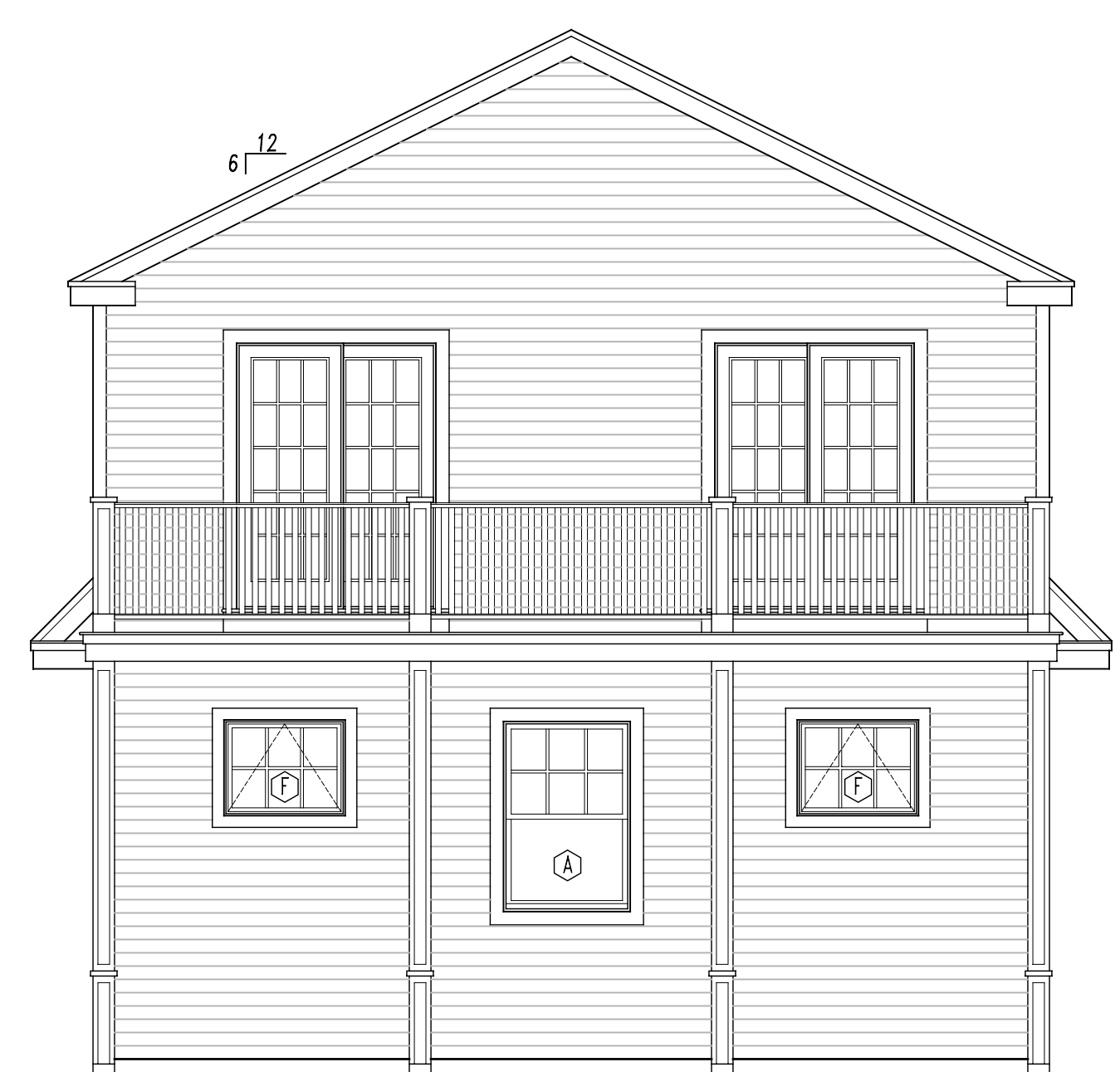
1 WINDOW SCHEDULE
SCALE 1/4" = 1'-0"



6 RIGHT SIDE ELEVATION
SCALE 1/4" = 1'-0"



4 REAR ELEVATION
SCALE 1/4" = 1'-0"



2 REAR ELEVATION (w/OPTIONAL REAR PORCH)
SCALE 1/4" = 1'-0"

3/23/01 SUBMITTED FOR REVIEW
4/18/01 SUBMITTED FOR REVIEW

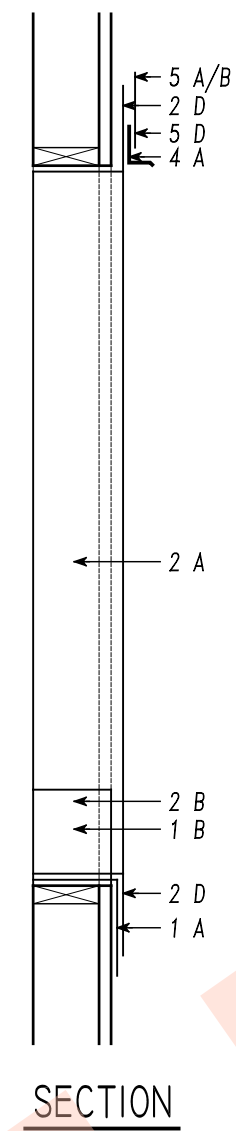
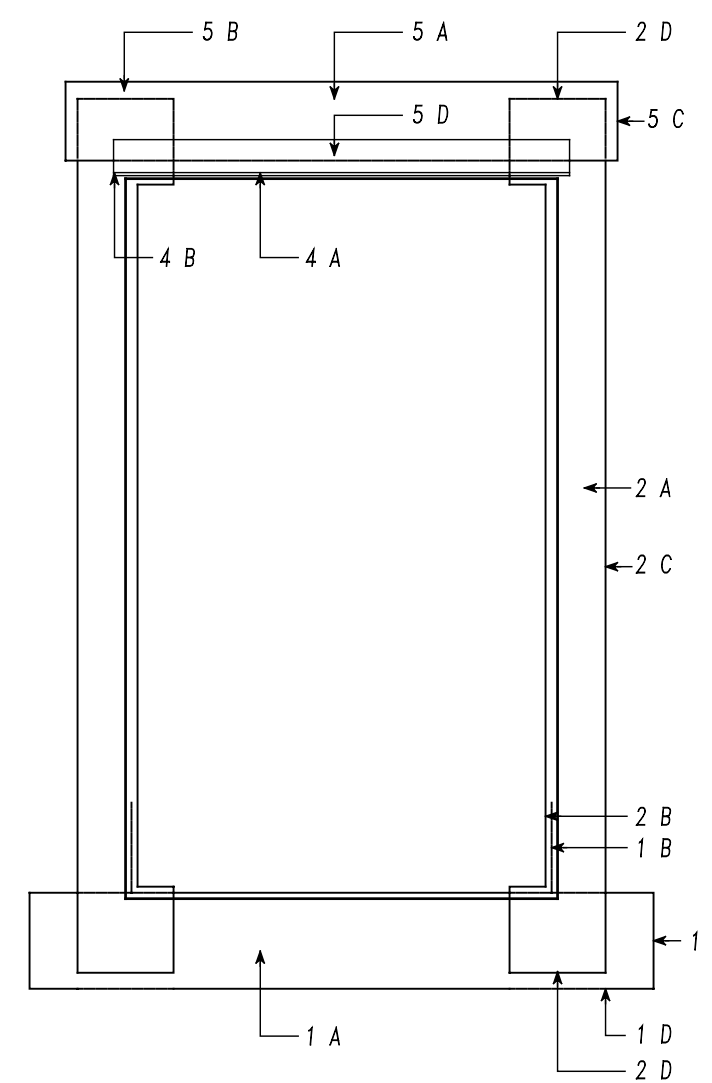
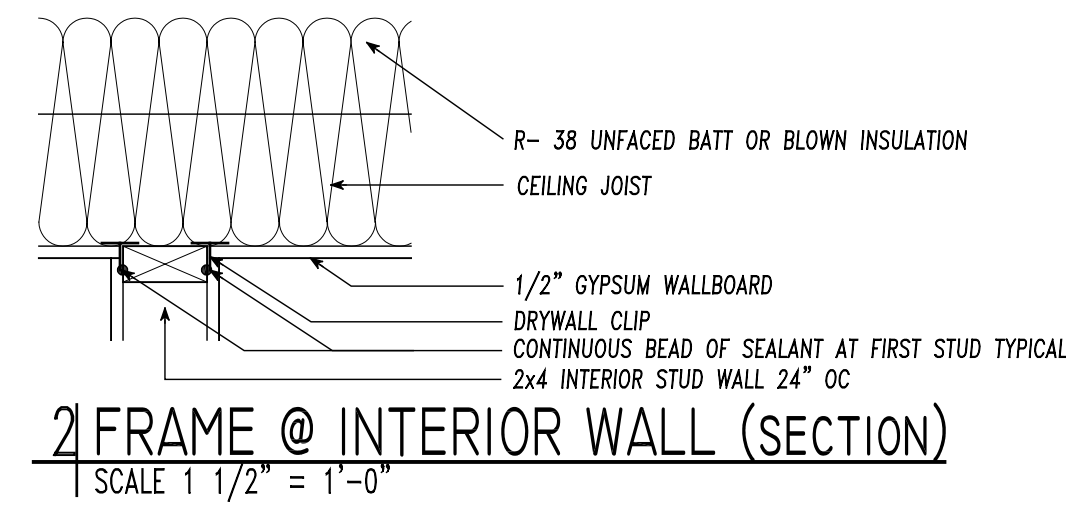
BUILDING SCIENCE CORPORATION
70 MAIN STREET WESTFORD, MASSACHUSETTS 01886
P: 978-589-5100 F: 978-589-5103

CLEVELAND INFILL PROTOTYPE HOUSE
GREEN BUILT HOMES, LTD
2324 LAKESIDE AVE. CLEVELAND OHIO 44114

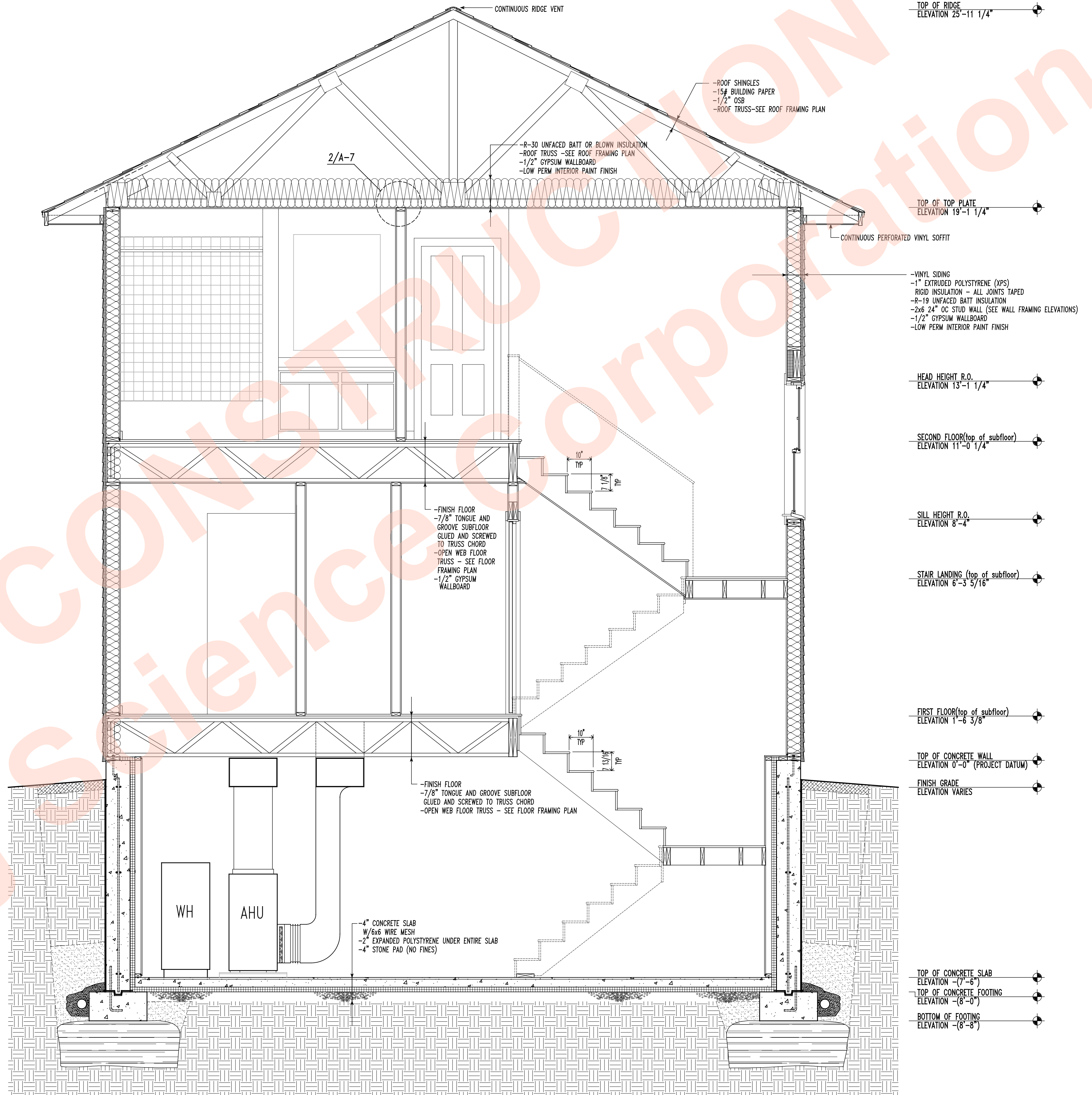
BUILDING ELEVATIONS and WINDOW SCHEDULE
SCALE AS NOTED

COPYRIGHT © 2001
BUILDING SCIENCE CORPORATION

A-6
FILE: GB_1608_09H3(cd)



1. A - INSTALL ADHESIVE MEMBRANE STRIP AT WINDOW SILL
B - FOLD ENDS AT JAMBS
C - ENSURE MEMBRANE EXTENDS MINIMUM OF 6" BEYOND JAMB ON EXTERIOR FACE OF WALL
D - ENSURE MEMBRANE EXTENDS MINIMUM OF 6" BELOW SILL ON EXTERIOR FACE OF WALL
 2. A - INSTALL ADHESIVE MEMBRANE STRIP AT WINDOW JAMB
B - LAP JAMB MEMBRANE OVER UPTURNED SILL MEMBRANE
C - ENSURE MEMBRANE EXTENDS MINIMUM OF 6" BEYOND JAMB ON EXTERIOR FACE OF WALL
D - ENSURE MEMBRANE EXTENDS MINIMUM OF 6" BELOW SILL AND ABOVE HEAD ON EXTERIOR FACE OF WALL
 3. A - ENSURE A CONTINUOUS BEAD OF SEALANT IS APPLIED TO BACK SIDE OF NAILING FLANGE OF WINDOW ON EXTERIOR FACE OF WALL
B - INSTALL WINDOW (ACCORDING TO MANUFACTURER'S SPECIFICATIONS)
 4. A - INSTALL HEAD FLASHING
B - ENSURE HEAD FLASHING IS AT LEAST AS WIDE AS WINDOW UNIT
 5. A - INSTALL ADHESIVE MEMBRANE STRIP AT WINDOW HEAD FLASHING
B - ENSURE MEMBRANE EXTENDS ABOVE JAMB MEMBRANES
C - ENSURE MEMBRANE EXTENDS BEYOND JAMB FLASHINGS
D - ENSURE MEMBRANE LAPS HEAD FLASHING MINIMUM 2"
- GENERAL NOTES
A - ENSURE ALL SURFACES TO RECEIVE MEMBRANE FLASHING ARE CLEAN AND DRY
B - ENSURE MEMBRANE IS WELL SEATED AGAINST EXTERIOR SHEATHING - EXERCISE CARE SO AS TO REDUCE ANY UNEEDED WRINKLES IN APPLIED MEMBRANES



3/23/01 SUBMITTED FOR REVIEW
4/18/01 SUBMITTED FOR REVIEW

BUILDING SCIENCE CORPORATION
70 MAIN STREET WESTFORD, MASSACHUSETTS 01886
P: 978-589-5100 F: 978-589-5103

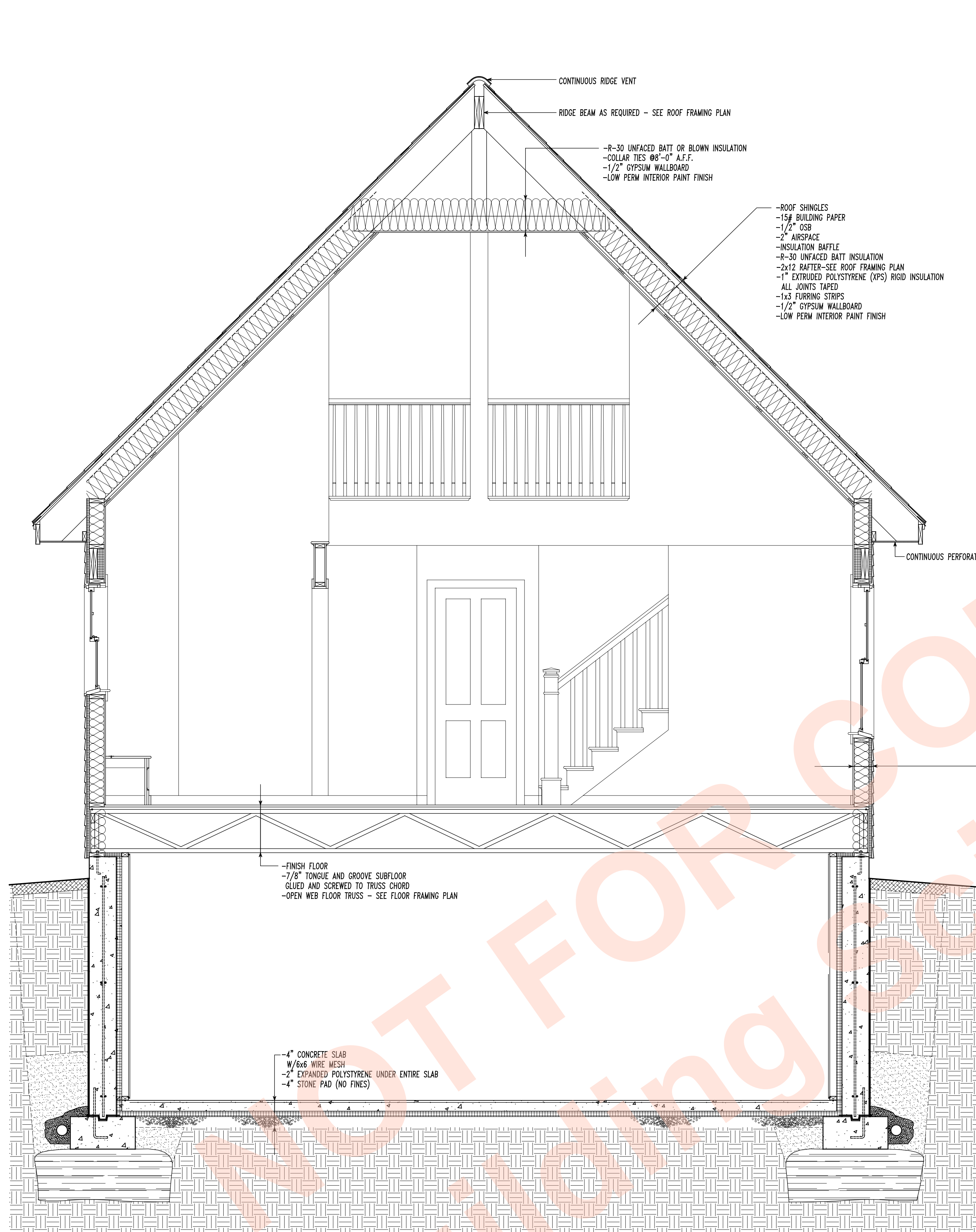
CLEVELAND INFILL PROTOTYPE HOUSE
GREEN BUILT HOMES, LTD
2324 LAKESIDE AVE. CLEVELAND OHIO 44114

BUILDING SECTION BB
SCALE AS NOTED

COPYRIGHT © 2001
BUILDING SCIENCE CORPORATION

A-7

FILE: GB_1608_09H3(cd)



TOP OF RIDGE
 ELEVATION 24'-0"

TOP OF TOP PLATE
 ELEVATION 11'-0 1/4"

FIRST FLOOR (top of subfloor)
 ELEVATION 1'-6 3/8"

TOP OF CONCRETE WALL
 ELEVATION 0'-0" (PROJECT DATUM)

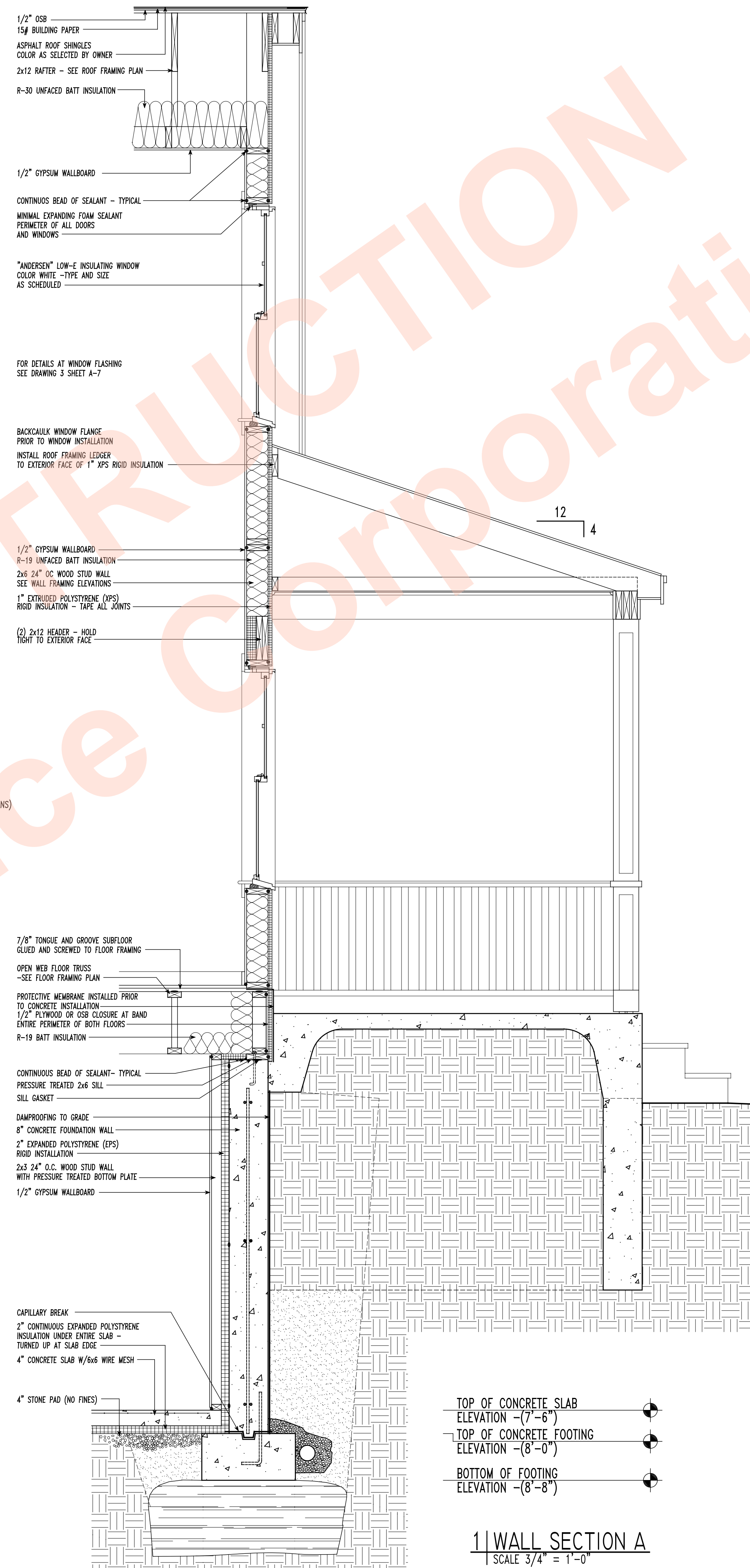
FINISH GRADE
 ELEVATION VARIES

TOP OF CONCRETE SLAB
 ELEVATION -7'-6"

TOP OF CONCRETE FOOTING
 ELEVATION -8'-0"

BOTTOM OF FOOTING
 ELEVATION -8'-8"

2 | BUILDING SECTION CC
 SCALE 1/2" = 1'-0"



HEAD HEIGHT R.O.
 ELEVATION 18'-3 7/8"

SILL HEIGHT R.O.
 ELEVATION 13'-6 5/8"

FIRST FLOOR (top of subfloor)
 ELEVATION 1'-6 3/8"

TOP OF CONCRETE WALL
 ELEVATION 0'-0" (PROJECT DATUM)

FINISH GRADE
 ELEVATION VARIES

TOP OF CONCRETE SLAB
 ELEVATION -7'-6"
 TOP OF CONCRETE FOOTING
 ELEVATION -8'-0"
 BOTTOM OF FOOTING
 ELEVATION -8'-8"

1 | WALL SECTION A
 SCALE 3/4" = 1'-0"

3/23/01 SUBMITTED FOR REVIEW
 4/18/01 SUBMITTED FOR REVIEW

BUILDING SCIENCE CORPORATION
 70 MAIN STREET WESTFORD, MASSACHUSETTS 01886
 P: 978-589-5100 F: 978-589-5103

CLEVELAND INFILL PROTOTYPE HOUSE
 GREEN BUILT HOMES, LTD
 2324 LAKESIDE AVE. CLEVELAND OHIO 44114

BUILDING SECTION CC
 WALL SECTION A
 SCALE AS NOTED

COPYRIGHT © 2001
 BUILDING SCIENCE
 CORPORATION

A-8
 FILE: GB_1608_09H3(cd)