

# CAMERON PARISH DEMONSTRATION HOUSE

# HOT HUMID CLIMATE

## THREE BEDROOM - FLOOD ZONE

### Important Note About House Plans

House Plans are fully integrated sets of construction drawings created by BSC for specific locations and climates. The sets include floor plans, detailed framing plans and wall framing elevations, exterior elevations and sections, advanced framing and enclosure details, as well as mechanical and electrical plans.

Through our multi-disciplinary team approach, interior, framing and mechanical layouts are designed and coordinated well before the start of construction. Duct layouts are not only shown on the mechanical plan but on the framing plan as well. This level of coordination limits changes made in the field and helps to ensure assemblies and systems are installed as designed.

#### Please Note

Please note that House Plans are posted as examples of high performance housing designs and are not to be used for construction. If you wish to use these plans as a basis for a house design, you should keep the following in mind:

- Most state and local governments require that a set of drawings be stamped by an architect licensed to practice locally
- Foundation plans need to be developed for the specific site and climate
- While these drawings were developed to be compliant with the then-current IRC code, you will need to meet your local building code requirements
- Finally, since materials and products specified in the drawings may not be available in all locations, you will need to carefully research any substitutions to verify compatibility and performance.

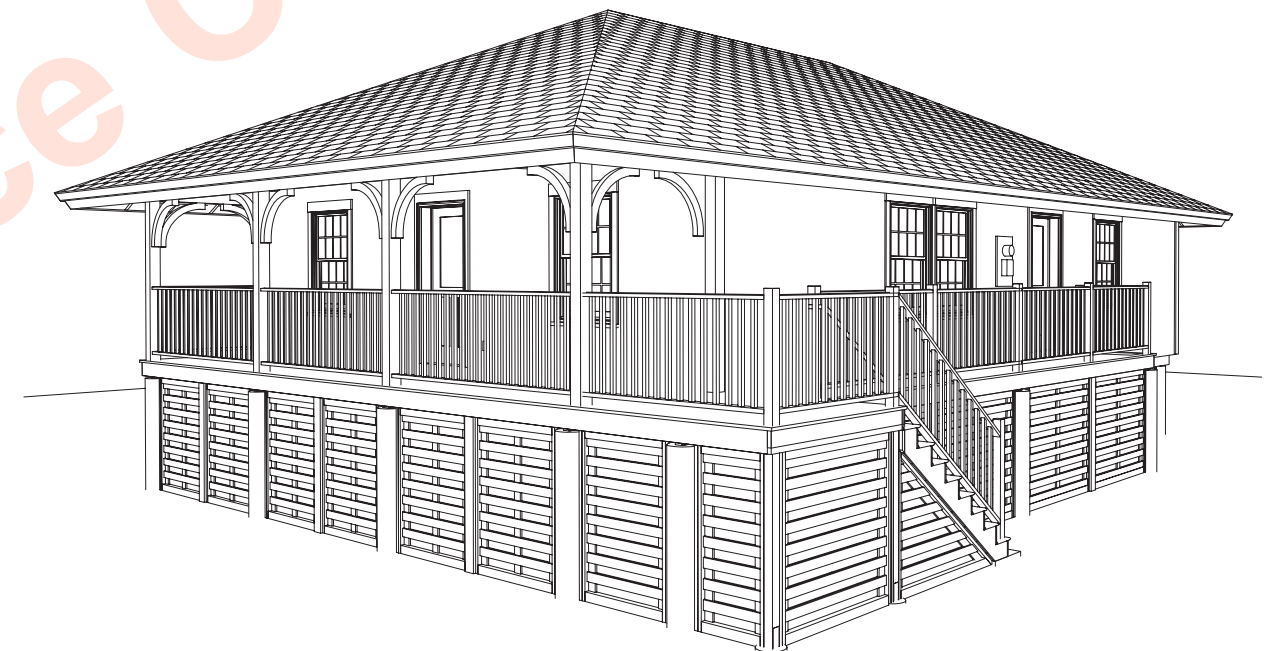
#### SQUARE FOOTAGE

FIRST FLOOR

1250 SQ FT

#### LIST OF DRAWINGS

- A-1 FOUNDATION / FLOOR FRAMING PLANS
- A-2 FLOOR PLAN / WALL FRAMING ELEVATIONS
- A-3 ROOF FRAMING / ROOF PLAN
- A-4 BUILDING ELEVATIONS
- A-5 BUILDING SECTIONS / DETAILS
- A-6 DETAILS
- M-1 MECHANICAL PLANS
- E-1 ELECTRICAL PLANS



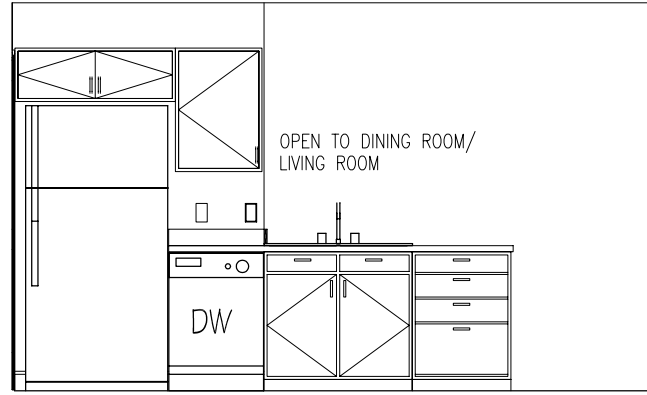
DATE: 15 SEPTEMBER 2006

BUILDING SCIENCE CORPORATION

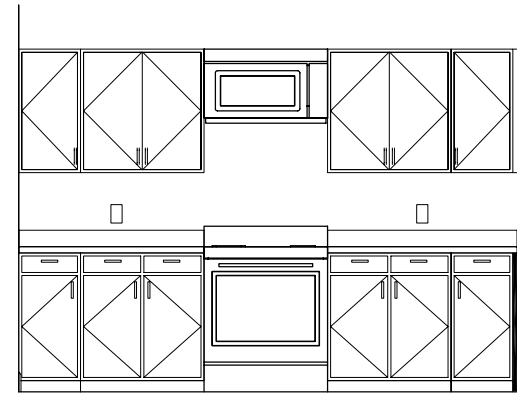
70 MAIN STREET WESTFORD, MASSACHUSETTS 01886  
P: 978-589-5100 F: 978-589-5103







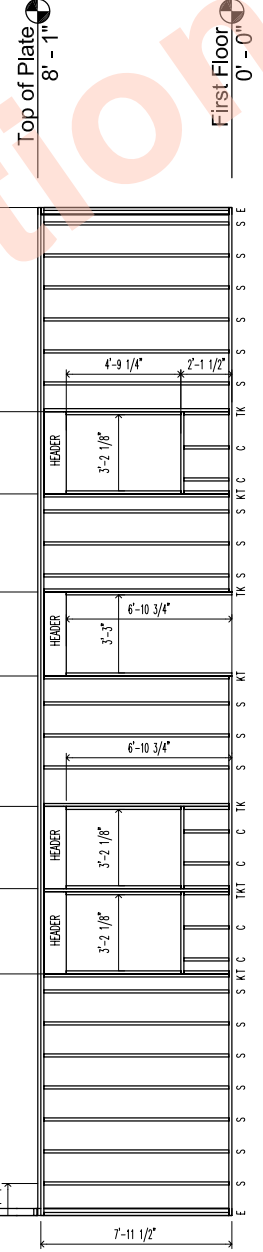
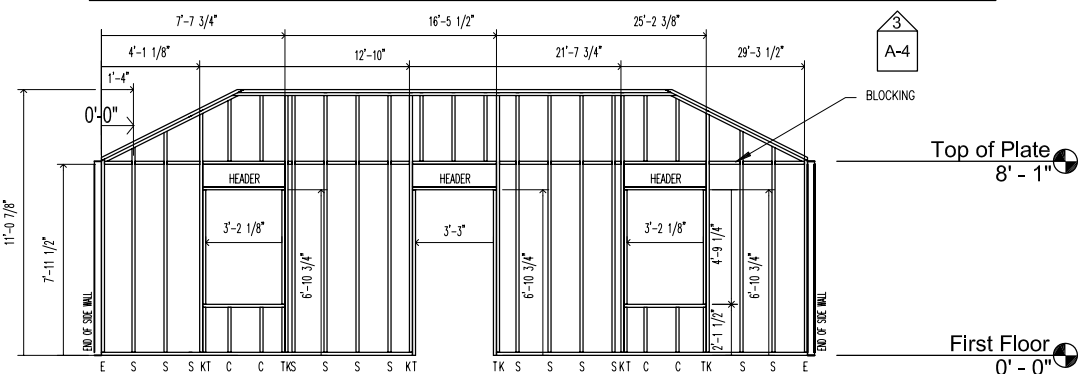
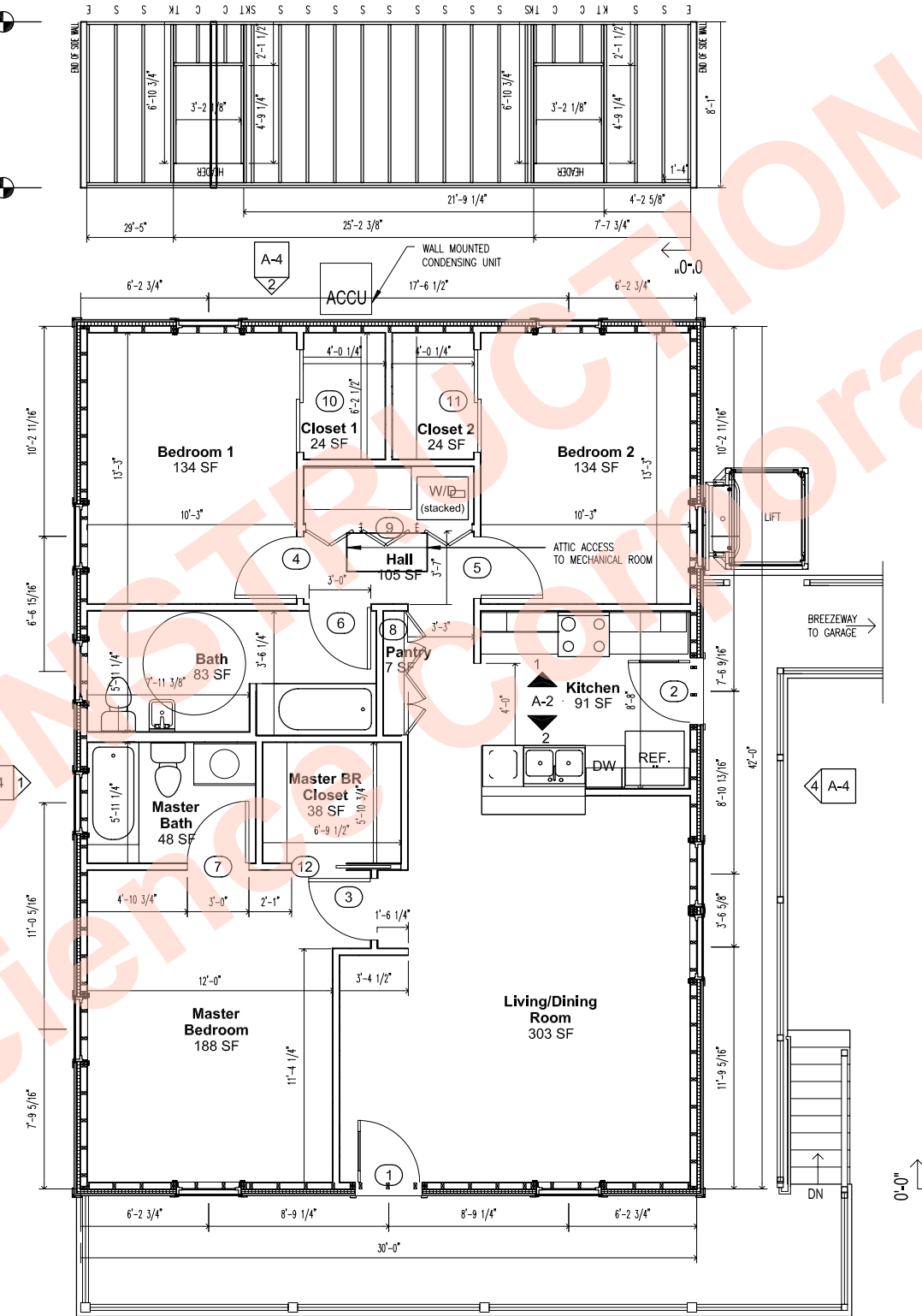
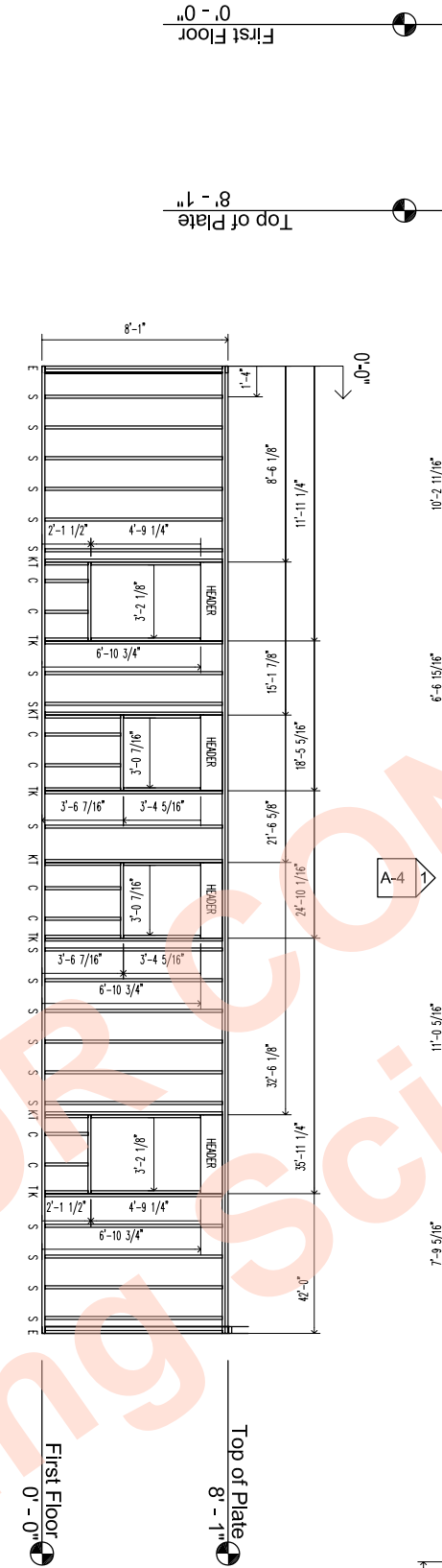
2 | KITCHEN SINK ELEVATION  
N.T.S.

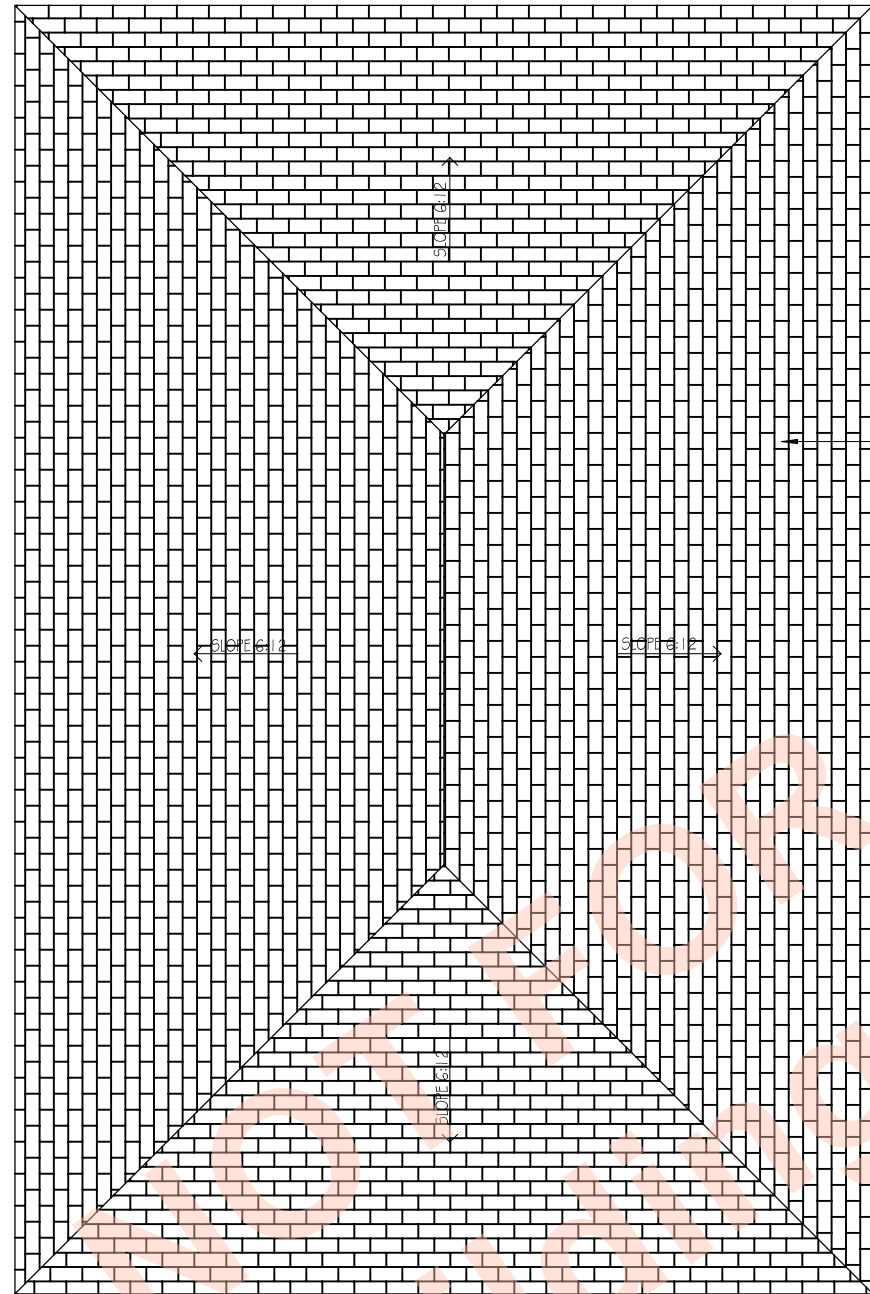


1 | KITCHEN STOVE ELEVATION  
N.T.S.

Door Schedule			
Mark	Width	Height	Comments
1	3' - 0"	6' - 8"	
2	3' - 0"	6' - 8"	
3	3' - 0"	6' - 8"	
4	3' - 0"	6' - 8"	
5	3' - 0"	6' - 8"	
6	3' - 0"	6' - 8"	
7	3' - 0"	6' - 8"	
8	3' - 0"	6' - 8"	LOUVERED
9	8' - 8"	6' - 8"	LOUVERED BIFOLDS
10	5' - 0"	6' - 8"	LOUVERED SLIDER
11	5' - 0"	6' - 8"	LOUVERED SLIDER
12	2' - 8"	6' - 8"	LOUVERED POCKET
14	4' - 6"	6' - 8"	LOUVERED

3 | FLOOR PLAN AND FRAMING  
SCALE 1/8" = 1'-0"

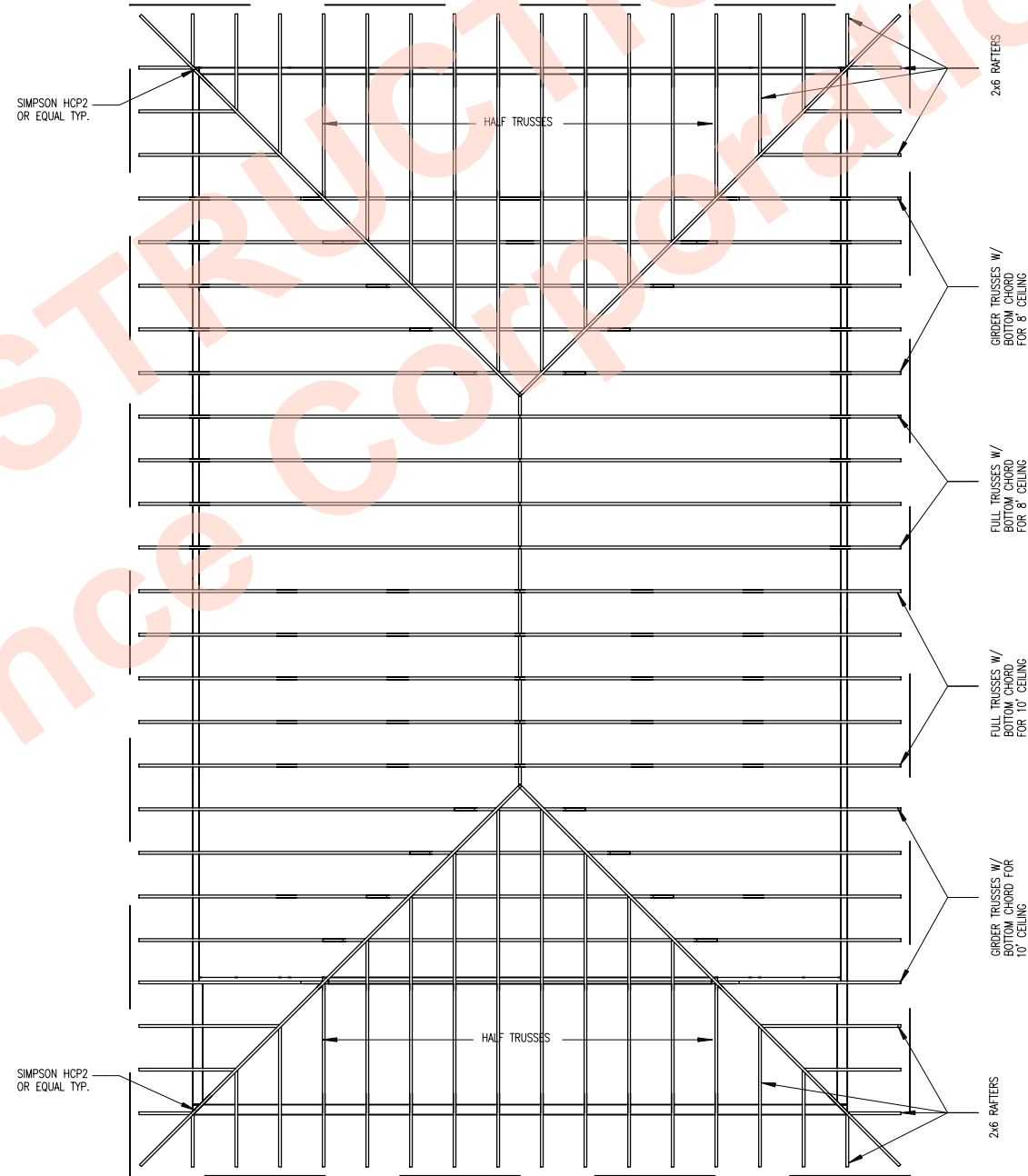




2 | ROOF PLAN  
SCALE 1/8" = 1'-0"

ASPHALT SHINGLES  
 SELF ADHERED ROOF MEMBRANE  
 1/2" TREATED OSB  
 4" RIGID INSULATION - TWO 2" STAGGERED LAYERS  
 STUCCO WRAP  
 1/2" TREATED OSB  
 WOOD TRUSSES OR 2x10 WOOD RAFTERS 24" O.C.  
 - SEE PLAN 2/A-3, ROOF FRAMING

PROVIDE CONTINUOUS LOAD PATH TIES AND  
 GI STRAPPING OF MIN. 20 GA. @ 4'-0" O.C.  
 FINAL TRUSS DESIGN BY LOCAL TRUSS  
 MANUFACTURER



1 | ROOF FRAMING PLAN  
SCALE 1/8" = 1'-0"

PROJECT: BUILDING SCIENCE CORPORATION  
 70 MAIN STREET WESTFORD, MASSACHUSETTS 01886 PH: 978-888-5100

THREE BEDROOM HOUSE  
 HOT-HUMID CLIMATE

ROOF PLAN AND  
 ROOF FRAMING

SCALE AS NOTED

COPYRIGHT © 2006  
 BUILDING SCIENCE CORPORATION

A-3

FILE: HH House 16in oc.dwg

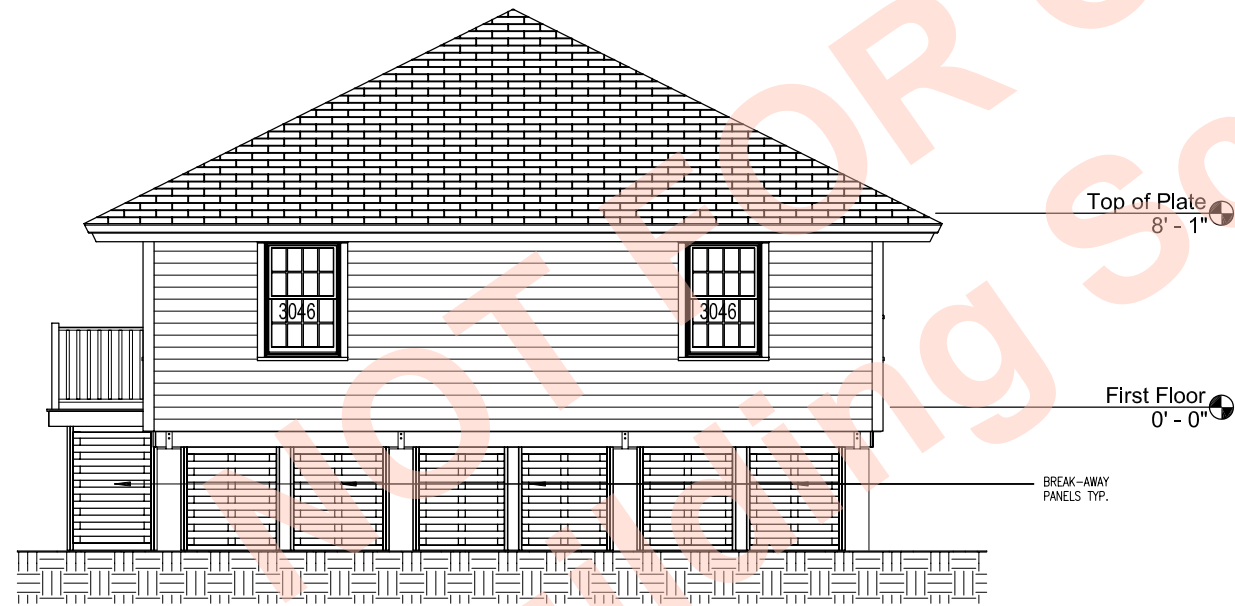




3 | FRONT ELEVATION  
SCALE 1/8" = 1'-0"



4 | RIGHT SIDE ELEVATION  
SCALE 1/8" = 1'-0"



2 | REAR ELEVATION  
SCALE 1/8" = 1'-0"



1 | LEFT SIDE ELEVATION  
SCALE 1/8" = 1'-0"

ARCHITECT: BUILDING SCIENCE CORPORATION  
70 MAIN STREET WESTFORD, MASSACHUSETTS 01886 PH: 978-898-5100

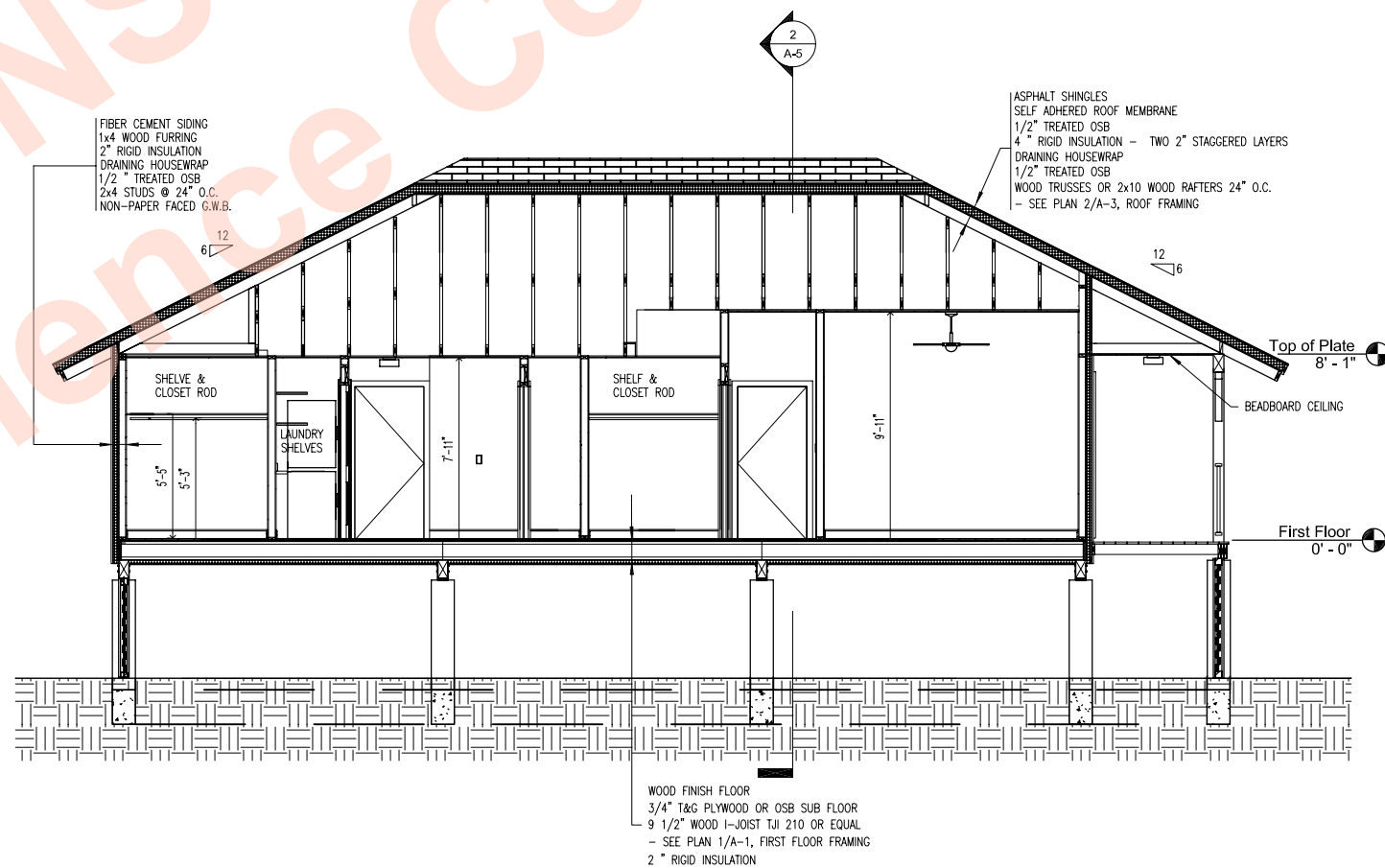
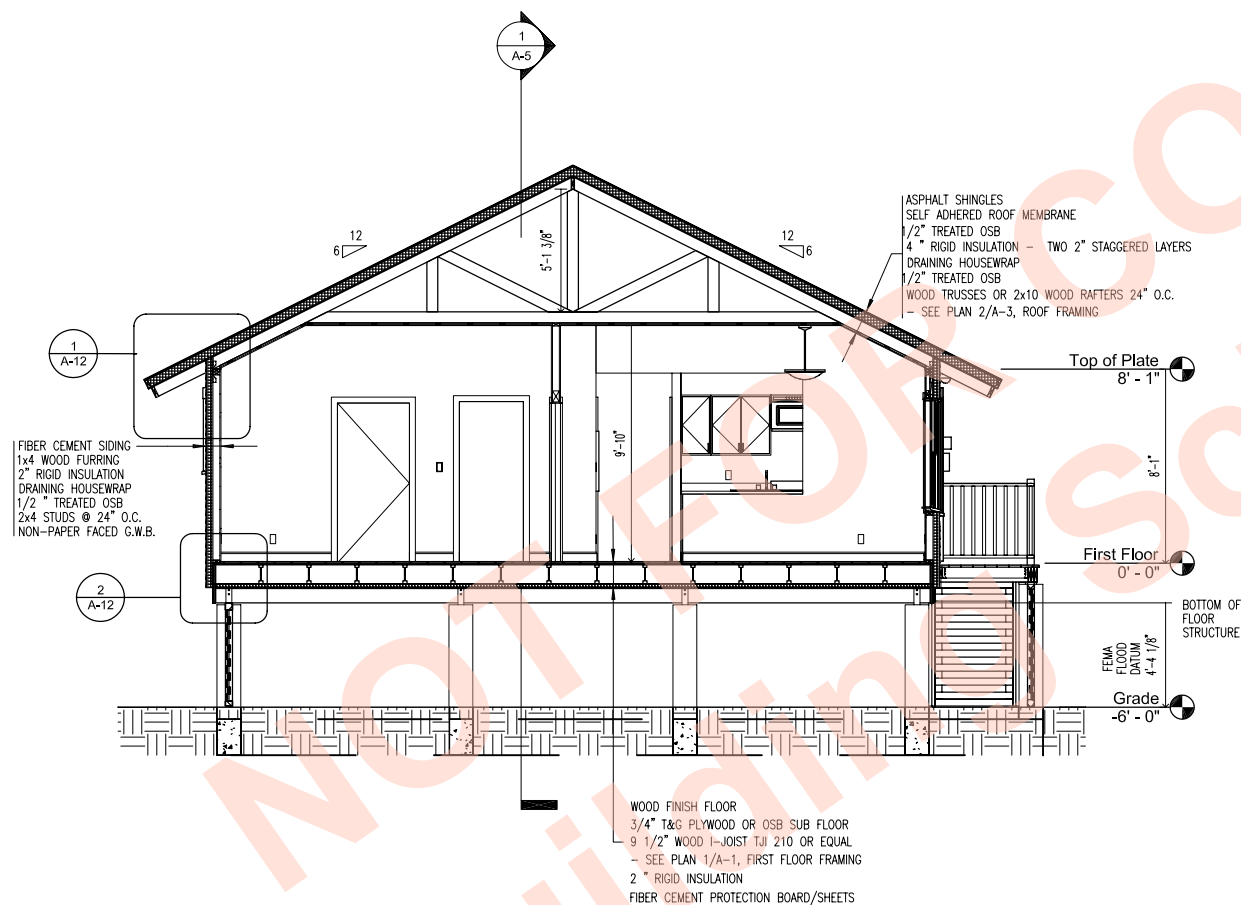
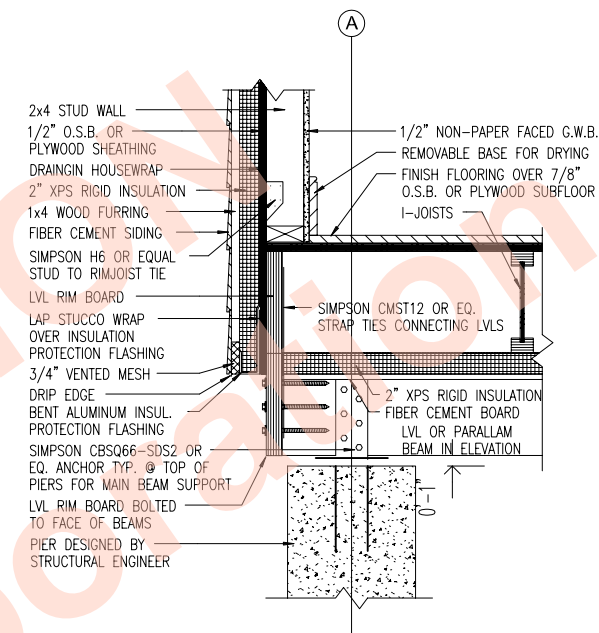
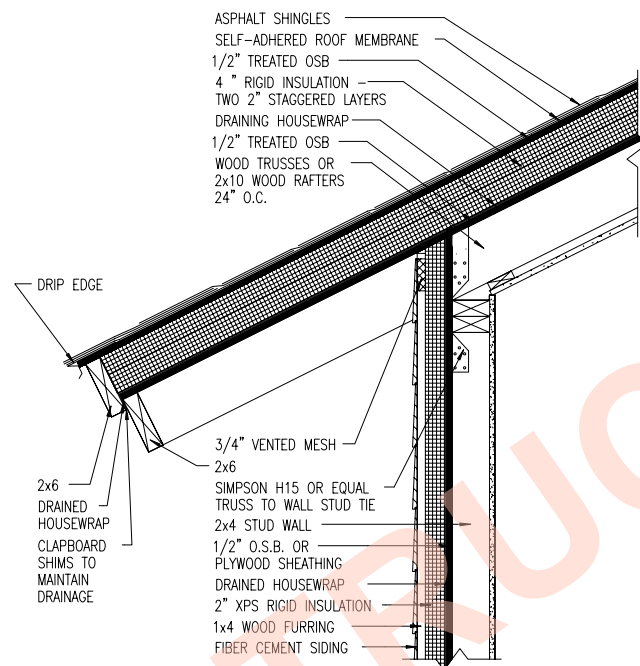
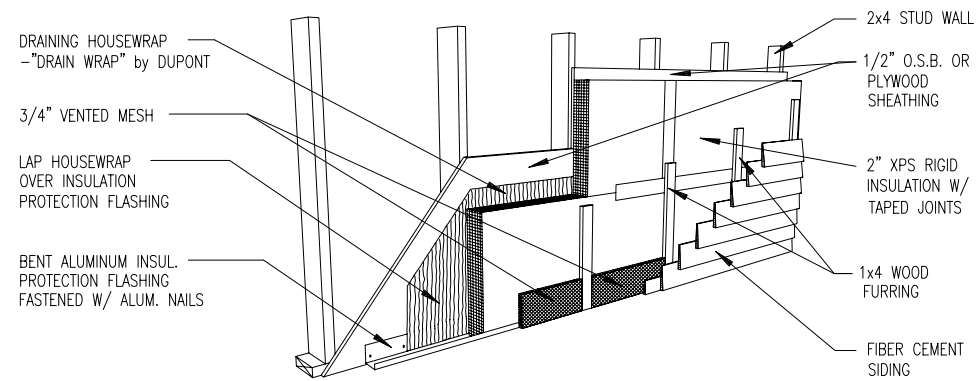
PROJECT: THREE BEDROOM HOUSE  
HOT-HUMID CLIMATE

BUILDING ELEVATIONS  
SCALE AS NOTED  
COPYRIGHT © 2006 BUILDING SCIENCE CORPORATION



A-4

FILE: HH House 16in oc.dwg



BUILDING SCIENCE CORPORATION  
70 MAIN STREET WESTFORD, MASSACHUSETTS 01886 PH: 978-898-5100

THREE BEDROOM HOUSE  
HOT-HUMID CLIMATE

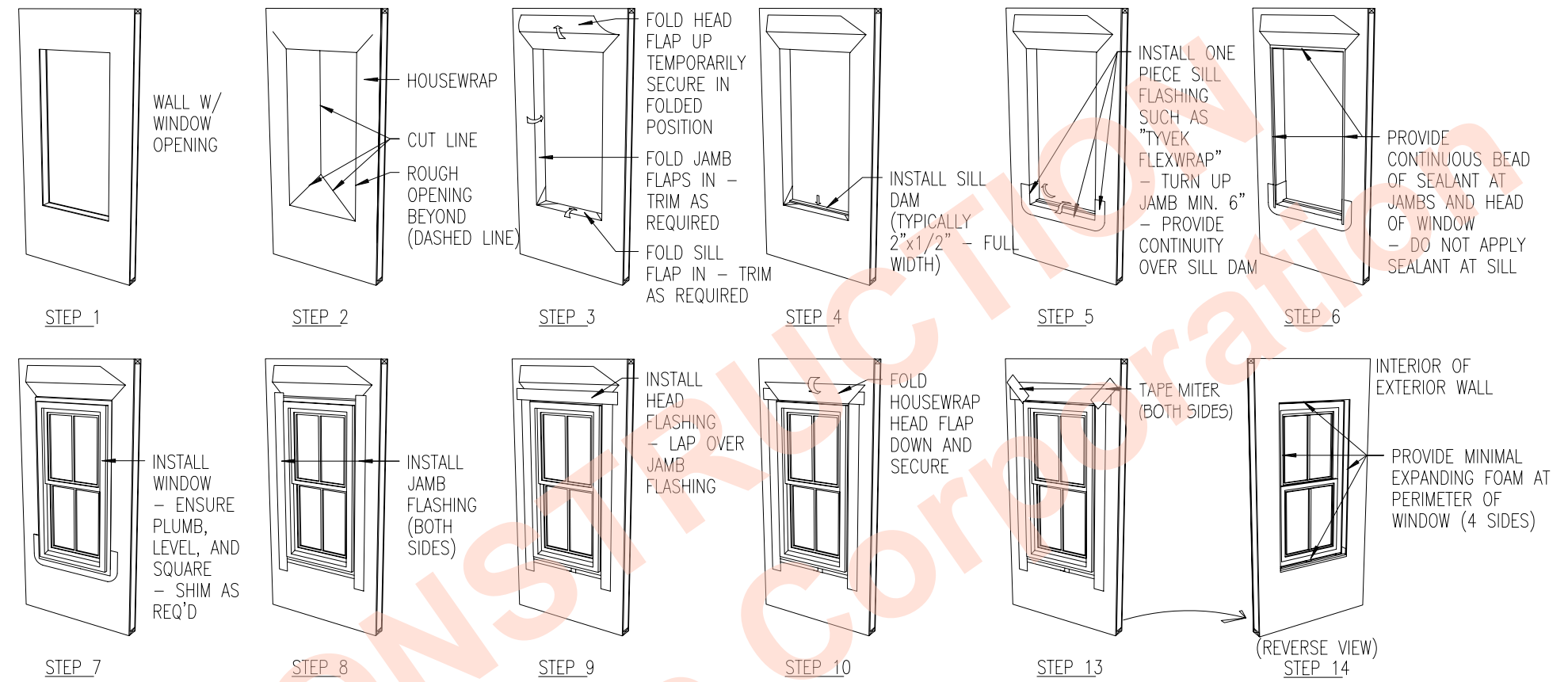
BUILDING SECTIONS AND DETAILS  
SCALE AS NOTED

COPYRIGHT © 2006 BUILDING SCIENCE CORPORATION

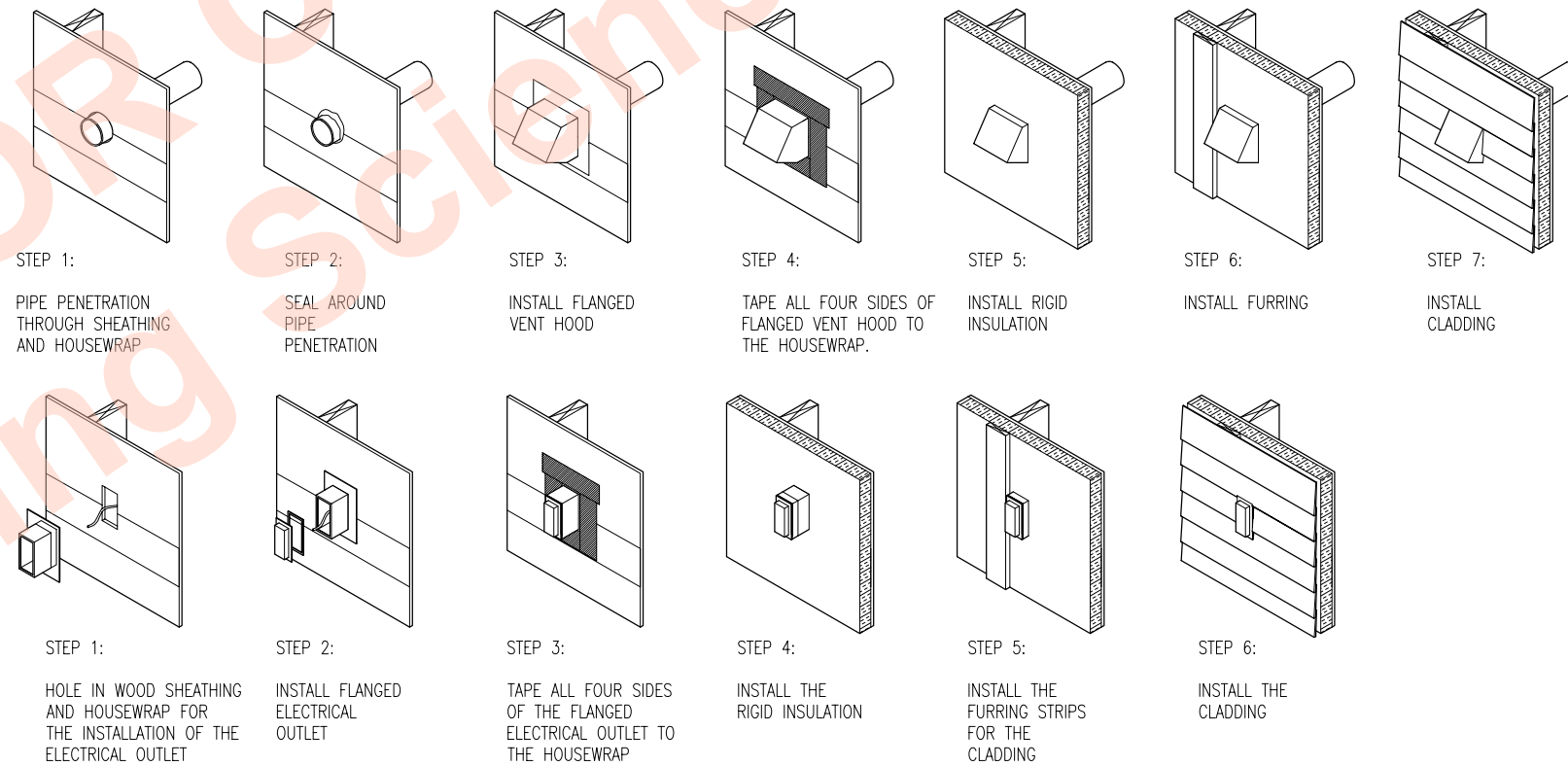
A-5

FILE: HH House 16in oc.dwg



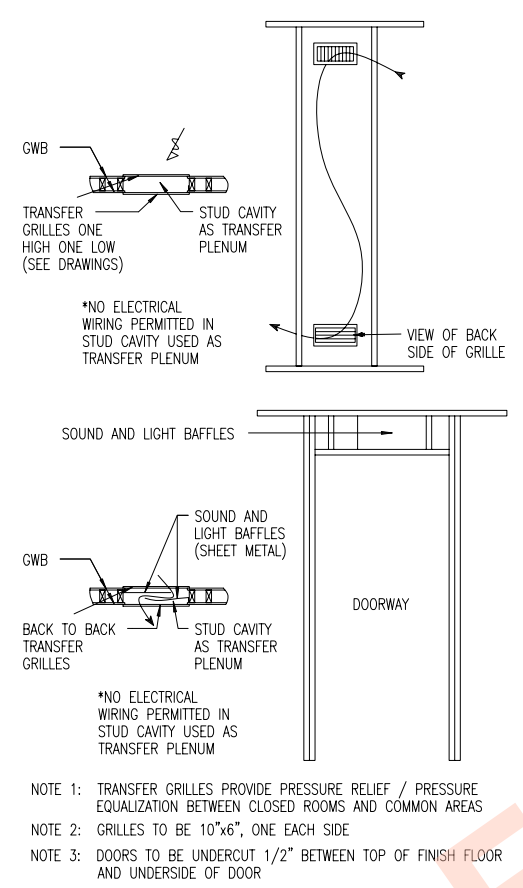


2 | WINDOW FLASHING DETAILS  
N.T.S.



1 | PENETRATION FLASHING DETAILS  
N.T.S.



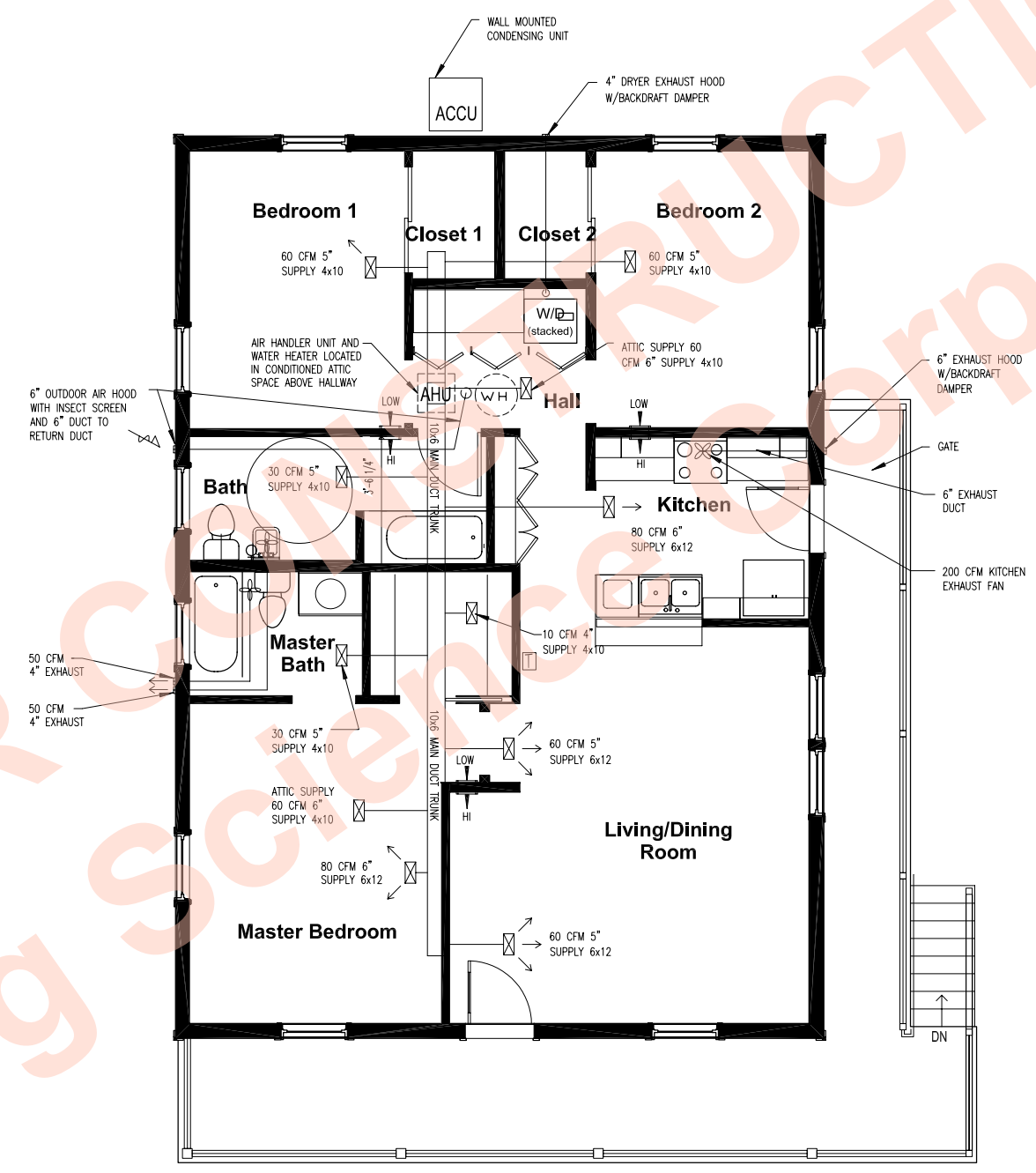


NOTE 1: TRANSFER GRILLES PROVIDE PRESSURE RELIEF / PRESSURE EQUALIZATION BETWEEN CLOSED ROOMS AND COMMON AREAS

NOTE 2: GRILLES TO BE 10"x6", ONE EACH SIDE

NOTE 3: DOORS TO BE UNDERCUT 1/2" BETWEEN TOP OF FINISH FLOOR AND UNDERSIDE OF DOOR

2 | TRANSFER GRILLE DETAILS  
N.T.S.



PLAN	DUCTS		EQUIPMENT INFORMATION		
	TRUNK SIZE	RECOMMENDED TONNAGE	AIR HANDLER SIZING	HEATING LOAD	COOLING LOAD
New Orleans	10x12 to 10x6's	1.5 tons	600 cfm	15.6 kBtu/h	18.5 kBtu/h

EQUIPMENT INFORMATION	
HEAT PUMP	14 SEER/8.5 HSPF
RECOMMENDED TONNAGE	1.5 tons
DESIGN HEATING LOAD	12.5 kBtu/h
DESIGN COOLING LOAD	17.0 kBtu/h
AIR HANDLER SIZING	600 cfm
MAIN SUPPLY TRUNK	10x12 to 10x6'S
RETURN TRUNK	10x16
RETURN GRILLE	14x24

LEGEND	
	SUPPLY REGISTER
	RETURN GRILLE
	THROUGH WALL TRANSFER GRILLES (6x12) LABELS DESIGNATE LOCATION ON WALL
	TOILET EXHAUST FAN, PANSONIC FV-05VQ OR EQUAL
	THERMOSTAT
	MOTORIZED DAMPER FOR O.A. CONTROL
	MANUAL DAMPER
	RETURN AIR FLOW

1 | MECHANICAL PLAN  
SCALE 1/8" = 1'-0"

BUILDING SCIENCE CORPORATION  
70 MAIN STREET WESTFORD, MASSACHUSETTS 01886 PH: 978-898-5100

THREE BEDROOM HOUSE  
HOT-HUMID CLIMATE

MECHANICAL PLANS  
SCALE AS NOTED

COPYRIGHT © 2006  
BUILDING SCIENCE CORPORATION

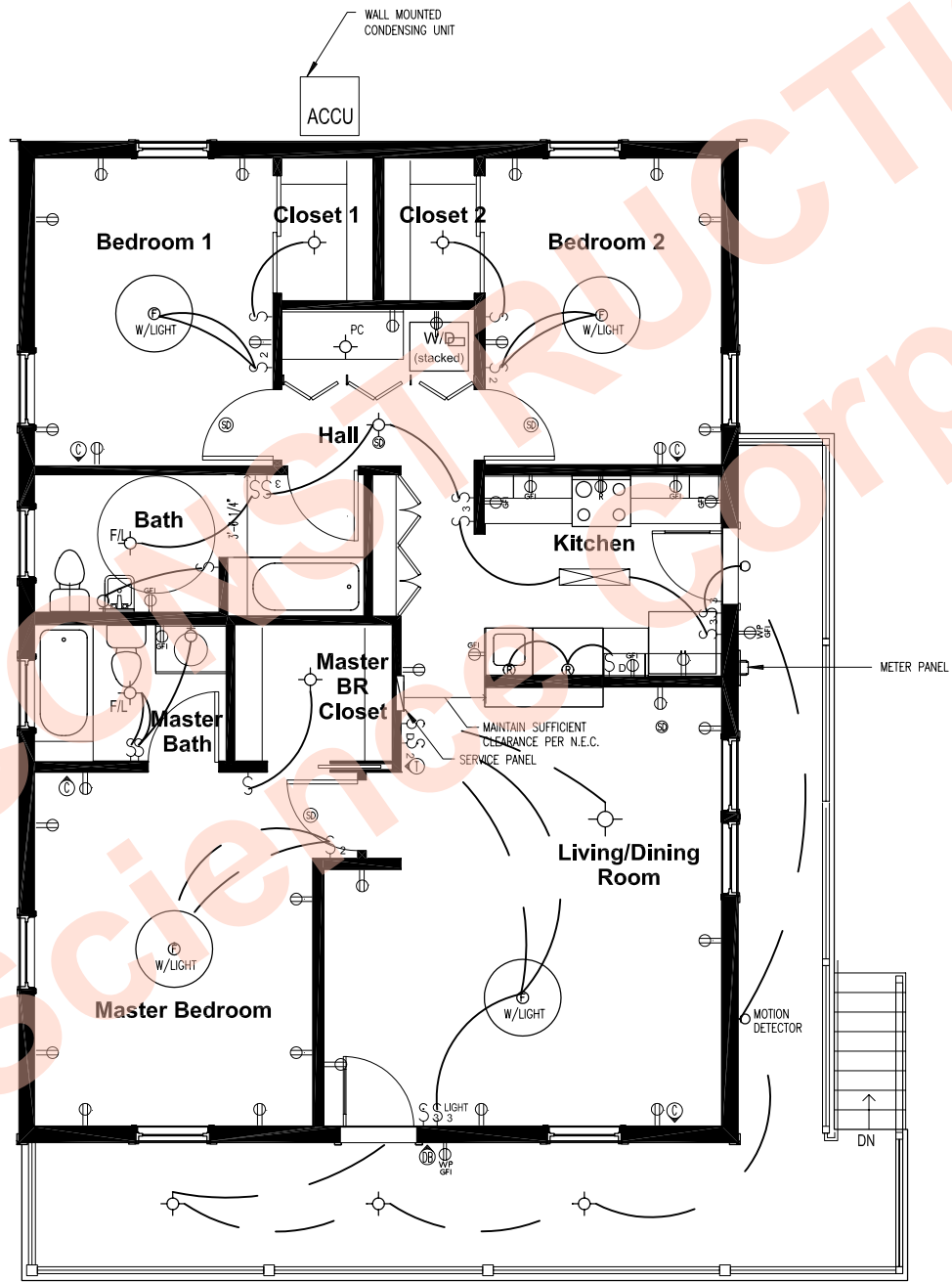
M-1

FILE: HH House 16in oc.dwg





NOT FOR CONSTRUCTION  
 © Building Science Corporation



NOTES: 1. ALL ELECTRICAL WORK MUST MEET THE MOST RECENT EDITION OF THE NATIONAL ELECTRIC CODE AND ANY LOCAL CODE THAT MAY SUPERCEDE THE N.E.C.  
 2. ASSUME 20A 220v CIRCUIT FOR ACCU, 20A 120v CIRCUIT FOR AHU, CLOSET OUTLET, AND 30A 220v CIRCUIT FOR DHW TANK.  
 3. PROVIDE CARBON MONOXIDE DETECTORS IF REQUIRED BY LOCAL CODE.

**Electrical Symbol Key**

- ⎓ Single Switch
- ⎓⎓ Double Switch
- ⎓⎓⎓ 3 Way Switch
- ⎓⎓⎓⎓ 3 Way Switch and Single Switch
- ⎓⎓⎓⎓⎓ Switch and Duplex Outlet
- ⎓⎓⎓⎓⎓⎓ Switch and GFI Duplex Outlet
- ⎓⎓⎓⎓⎓⎓ Duplex Outlet
- ⎓⎓⎓⎓⎓⎓⎓ GFI Duplex Outlet
- ⎓⎓⎓⎓⎓⎓⎓⎓ Duplex Outlet Weatherproof GFI
- ⎓⎓⎓⎓⎓⎓⎓⎓⎓ Double Duplex Outlet one GFI
- ⎓⎓⎓⎓⎓⎓⎓⎓⎓⎓ Range Outlet
- ⎓⎓⎓⎓⎓⎓⎓⎓⎓⎓⎓ Dryer Outlet
- ⎓⎓⎓⎓⎓⎓⎓⎓⎓⎓⎓⎓ Smoke Detector w/ Battery Backup and Inter-connection
- ⎓⎓⎓⎓⎓⎓⎓⎓⎓⎓⎓⎓ Ceiling Mounted Light Fixture
- ⎓⎓⎓⎓⎓⎓⎓⎓⎓⎓⎓⎓⎓ Ceiling Mounted Light Fixture w/ Pull Cord
- ⎓⎓⎓⎓⎓⎓⎓⎓⎓⎓⎓⎓⎓ Wall Mounted Light Fixture
- ⎓⎓⎓⎓⎓⎓⎓⎓⎓⎓⎓⎓⎓⎓ Surface Mount 2-tube Fluorescent Fixture
- ⎓⎓⎓⎓⎓⎓⎓⎓⎓⎓⎓⎓⎓⎓ Electrical Panel Box
- ⊕ Ceiling Fan
- Ⓢ Cable TV/Phone Outlet
- ⓈⓈ Door Bell
- ⓈⓈⓈ Thermostat

1 | ELECTRICAL PLAN  
 SCALE 1/8" = 1'-0"

PROJECT: BUILDING SCIENCE CORPORATION  
 70 MAIN STREET WESTFORD, MASSACHUSETTS 01886 PH: 978-888-5100

THREE BEDROOM HOUSE  
 HOT-HUMID CLIMATE

ELECTRICAL PLANS  
 SCALE AS NOTED

COPYRIGHT © 2006  
 BUILDING SCIENCE CORPORATION



E-1

FILE: HH House 16in oc.dwg