

Joseph Lstiburek, Ph.D., P.Eng

## Building Science 2009

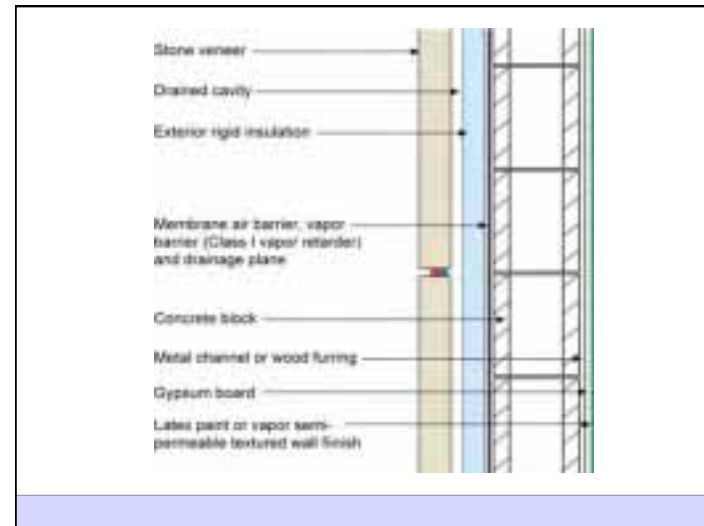
### How Tight is Too Tight

presented by [www.buildingscience.com](http://www.buildingscience.com)

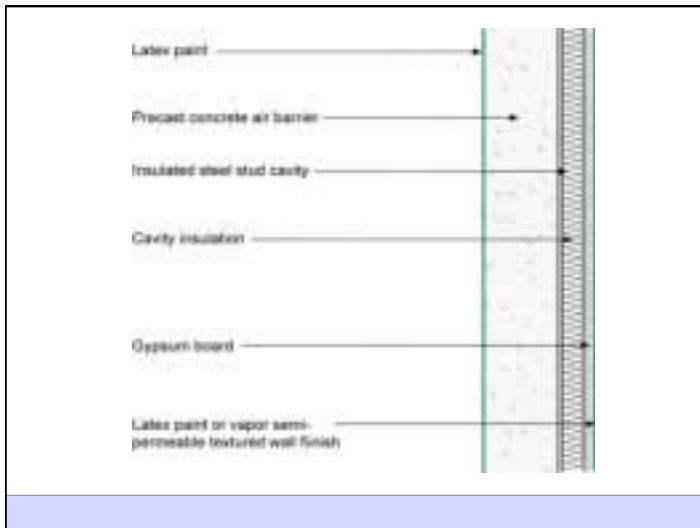
### Air Barrier Specifications

Air barrier system	
Material	0.02 l/(s·m <sup>2</sup> )@75 Pa
Assembly	0.20 l/(s·m <sup>2</sup> )@75 Pa
Enclosure/Compartment	2.00 l/(s·m <sup>2</sup> )@75 Pa

NORMALIZED AIR FLOW												LEAKAGE AREAS	
75 Pascals			50 Pascals			10 Pascals			4 Pascals			10 Pascal	4 Pascal
(l/s-m <sup>2</sup> )	(ft <sup>3</sup> /min-ft <sup>2</sup> )	(m <sup>3</sup> /h-m <sup>2</sup> )	(l/s-m <sup>2</sup> )	(ft <sup>3</sup> /min-ft <sup>2</sup> )	(m <sup>3</sup> /h-m <sup>2</sup> )	(l/s-m <sup>2</sup> )	(ft <sup>3</sup> /min-ft <sup>2</sup> )	(m <sup>3</sup> /h-m <sup>2</sup> )	(l/s-m <sup>2</sup> )	(ft <sup>3</sup> /min-ft <sup>2</sup> )	(m <sup>3</sup> /h-m <sup>2</sup> )	EqLA/100 ft <sup>2</sup>	ELA/100 ft <sup>2</sup>
2.000	0.394	7.200	1.537	0.303	5.532	0.540	0.106	1.943	0.298	0.059	1.071	3.136	1.670
0.200	0.039	0.720	0.154	0.030	0.553	0.054	0.011	0.194	0.030	0.006	0.107	0.314	0.167
0.020	0.004	0.072	0.015	0.003	0.055	0.005	0.001	0.019	0.003	0.001	0.011	0.031	0.017



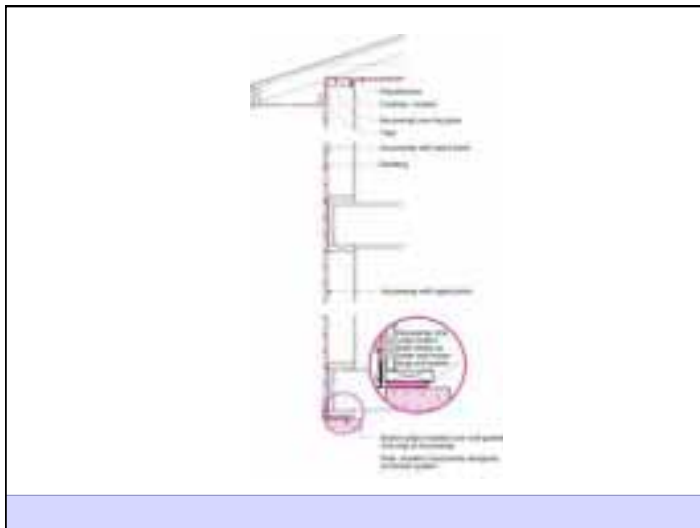
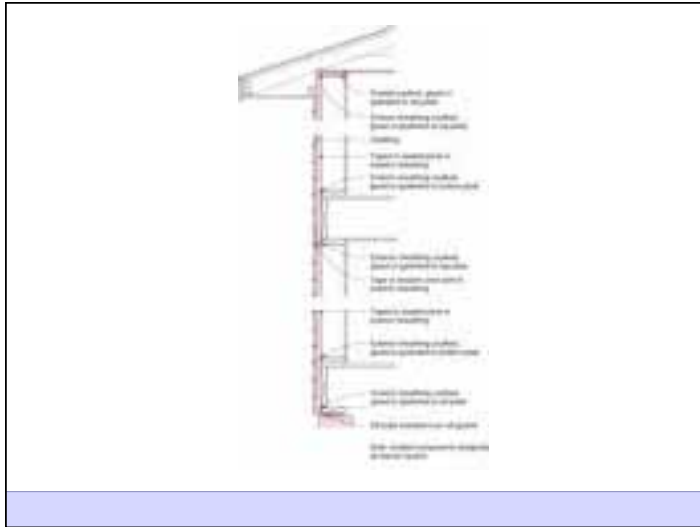
How Tight is Too Tight



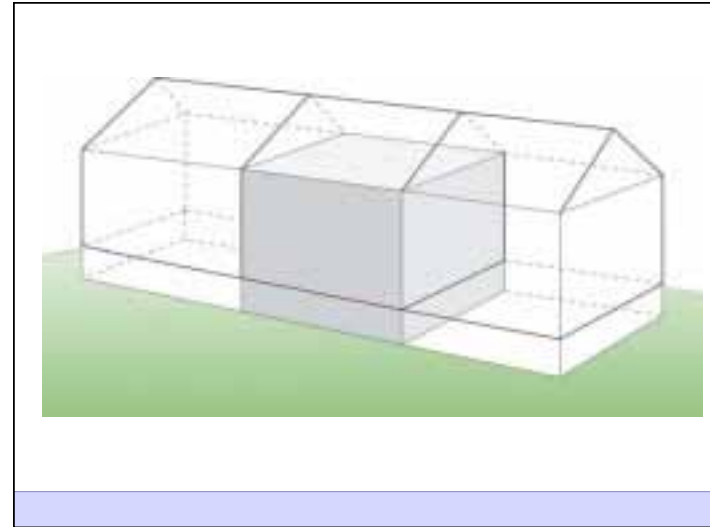
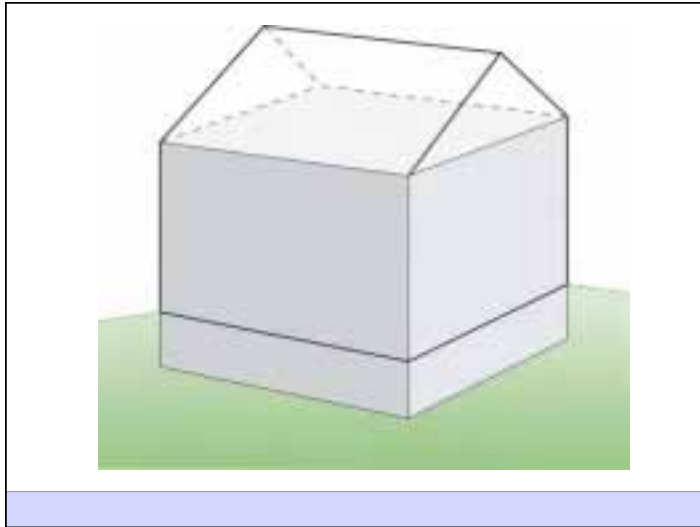




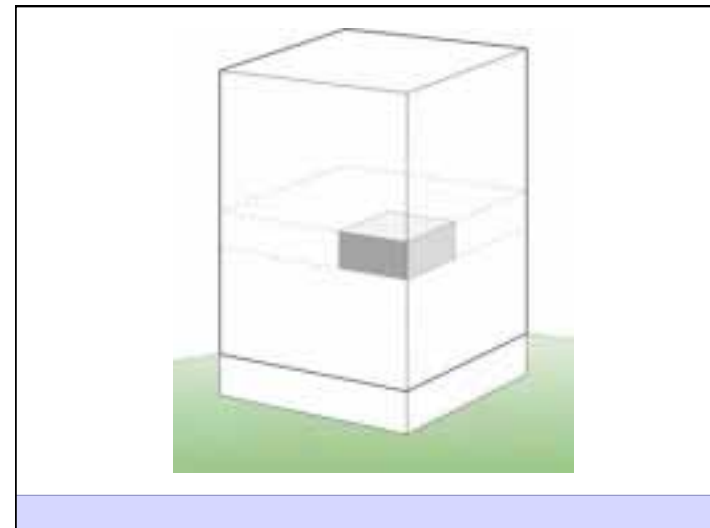
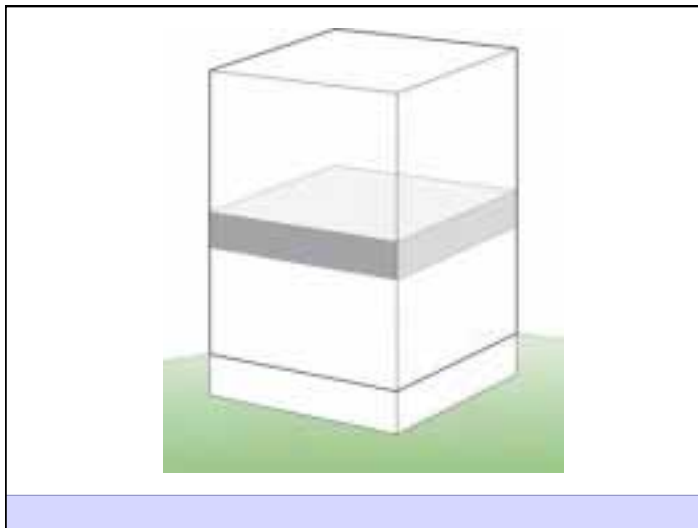
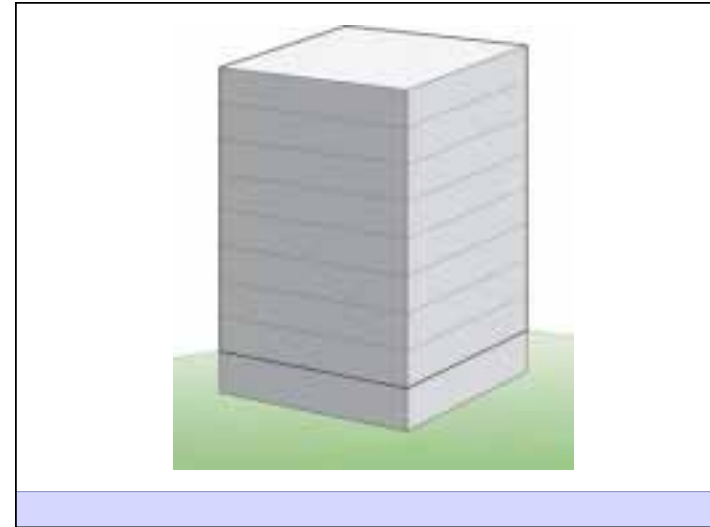
How Tight is Too Tight



How Tight is Too Tight

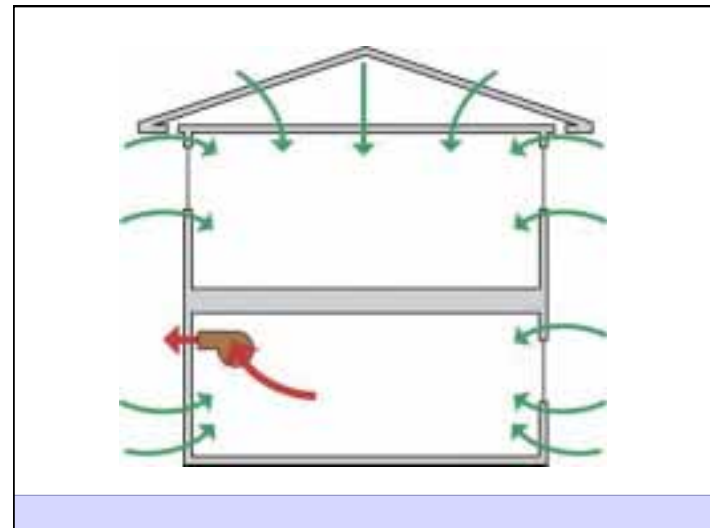
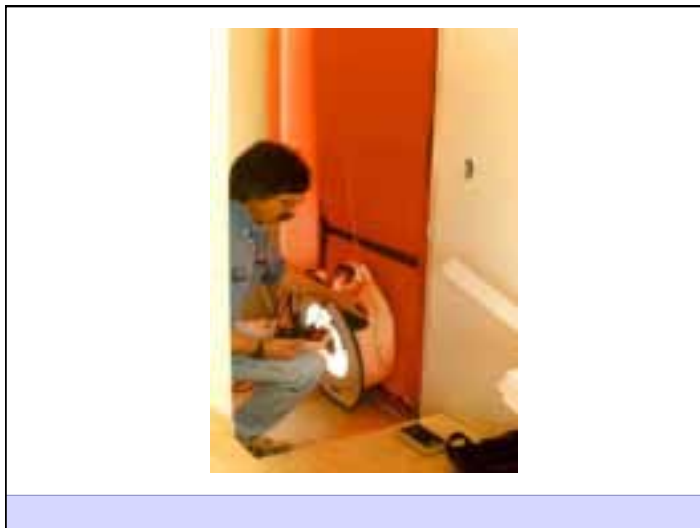
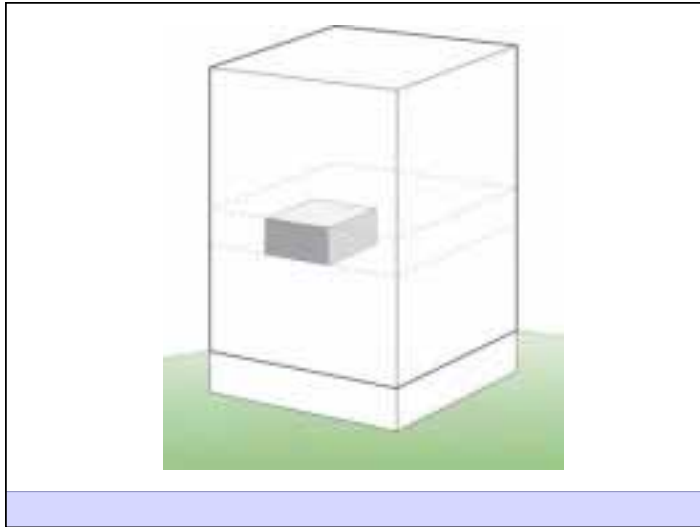


How Tight is Too Tight



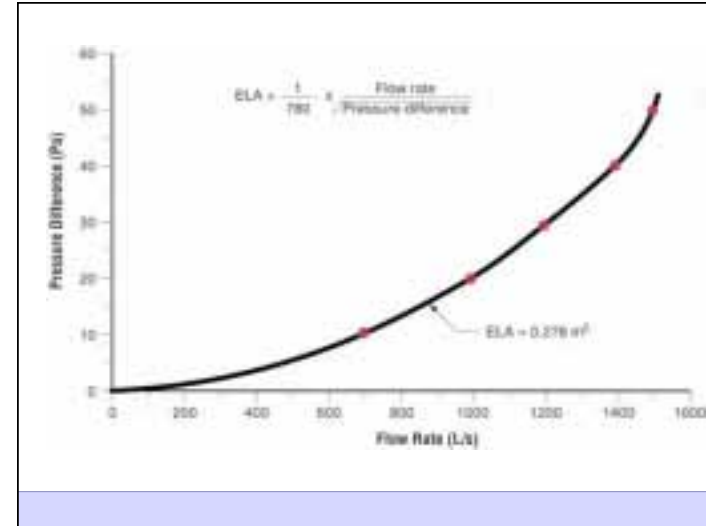
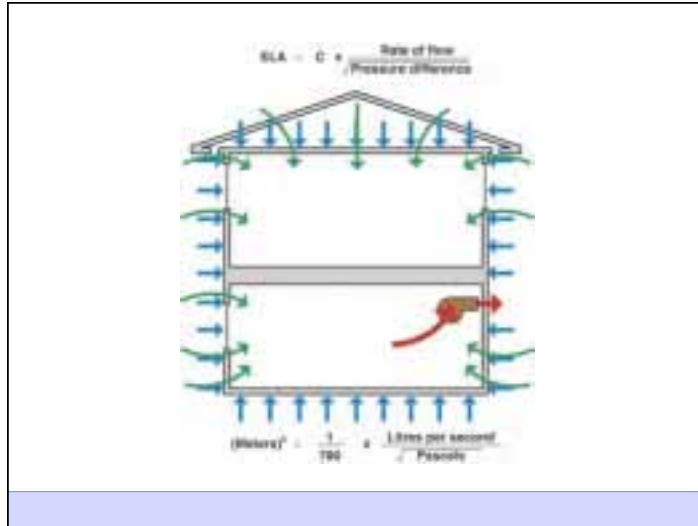


How Tight is Too Tight





# How Tight is Too Tight



Stuff That Is Not Particularly Useful But Studied and Researched to Death

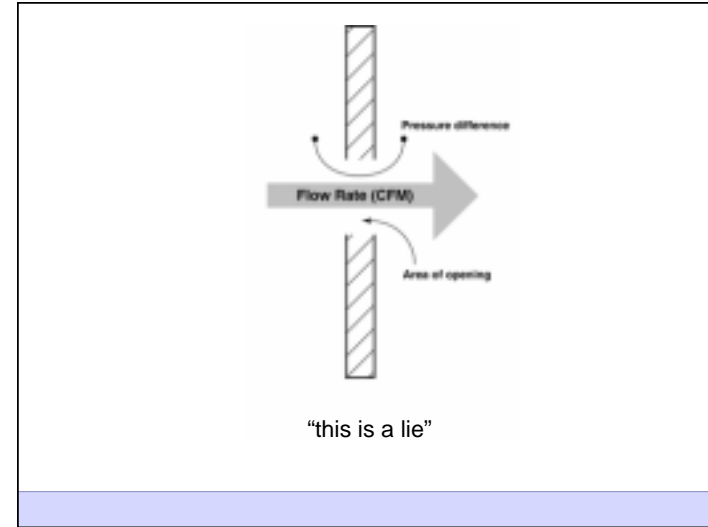
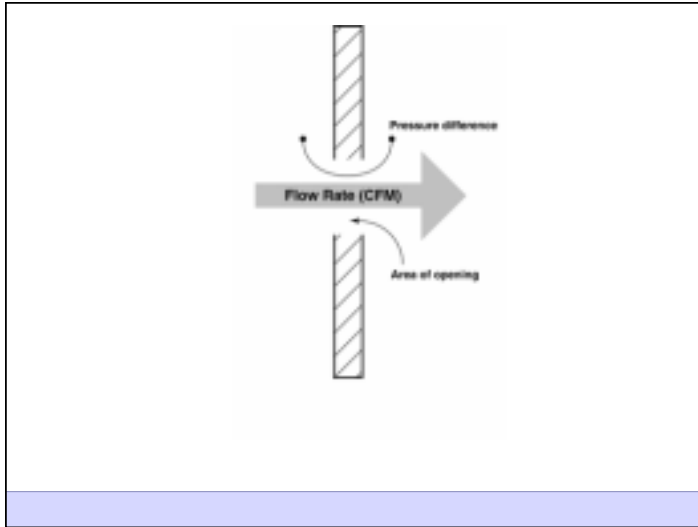
Stuff That Is Very Useful but Ignored by the Research Community

Stuff That Is Not Particularly Useful But Studied and Researched to Death

“this is called Physics”

Stuff That Is Very Useful but Ignored by the Research Community

“this is called Engineering”



Flow Through Orifices  
Turbulent Flow - "inertial effects"

Flow Through Porous Media  
Laminar Flow - "viscosity effects"

The bottom of this diagram is a light blue shaded area.

Flow Through Orifices  
Turbulent Flow - "inertial effects"

Flow Through Porous Media  
Laminar Flow - "viscosity effects"

"true but not useful"

The bottom of this diagram is a light blue shaded area.

$$Q = A \times C_d \times \frac{2}{\sqrt{P}} \quad \text{Bernoulli}$$

$$Q = C_k \times P \quad \text{Darcy}$$

$$Q = A \times C_d \times \frac{2}{\sqrt{P}} \quad \text{Bernoulli}$$

$$Q = C_k \times P \quad \text{Darcy}$$

$$Q = A \times C \times P^{\frac{1}{2}}$$

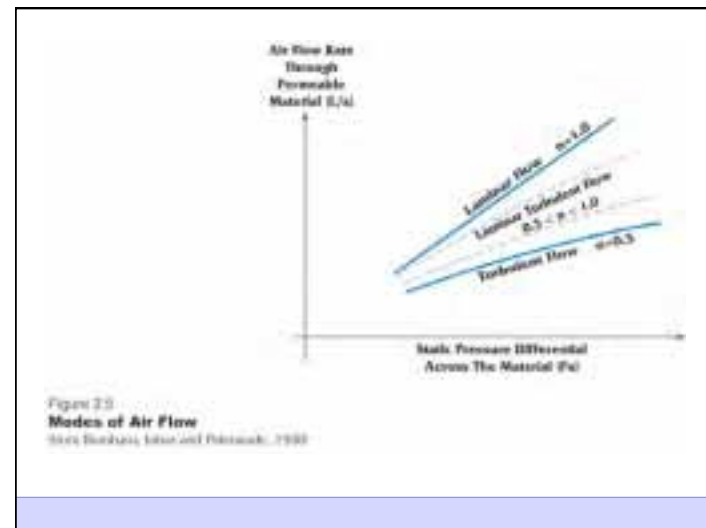
$$Q = C \times P$$

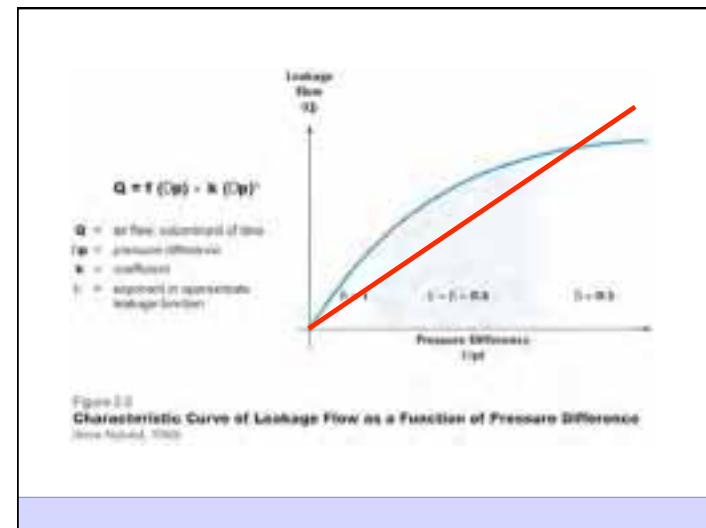
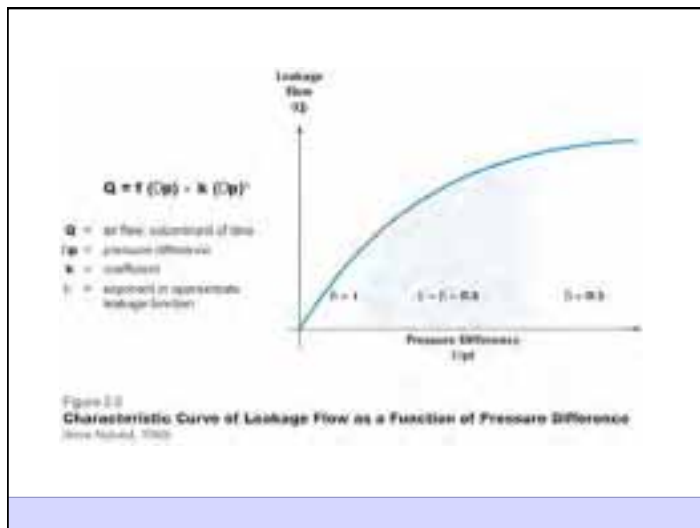
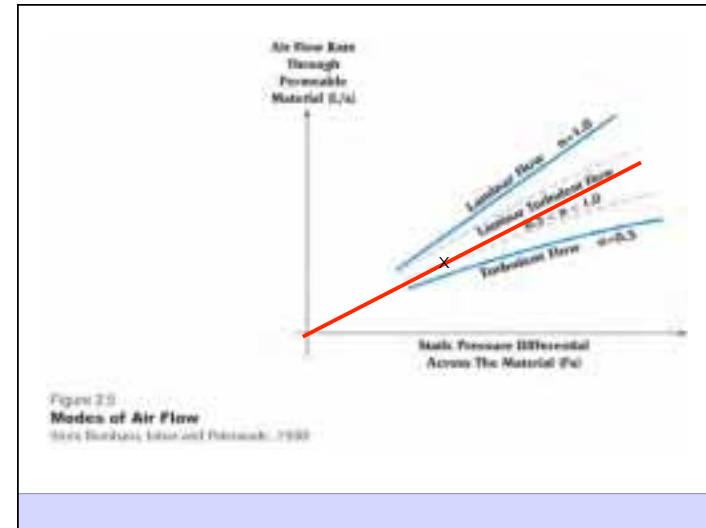
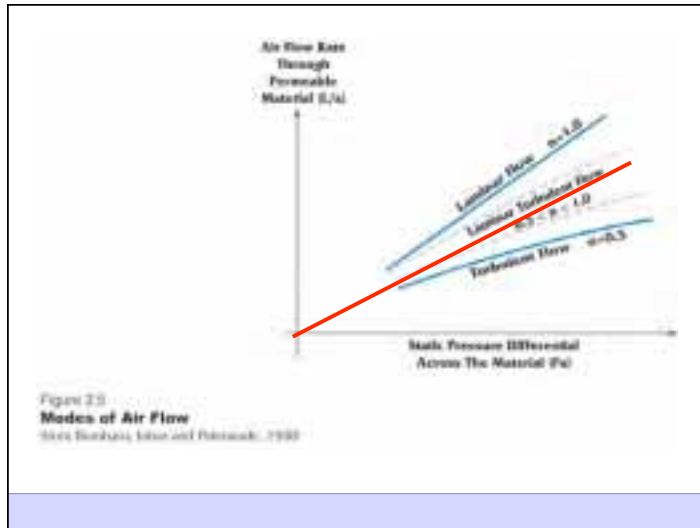
$$Q = A \times C_d \times \frac{2}{\sqrt{P}} \quad \text{Bernoulli}$$

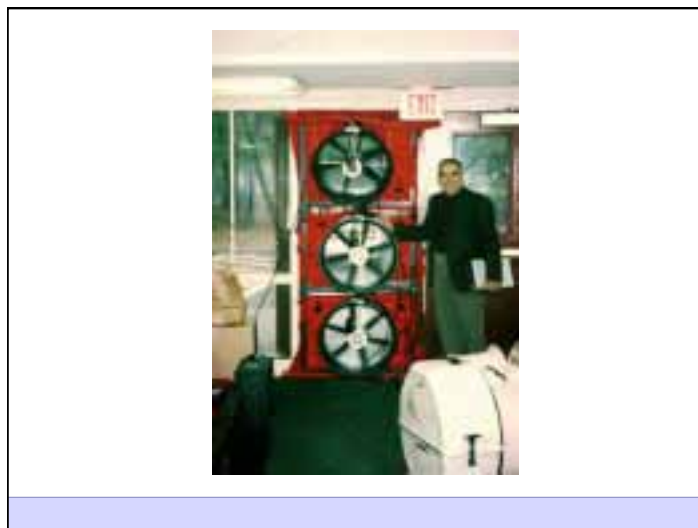
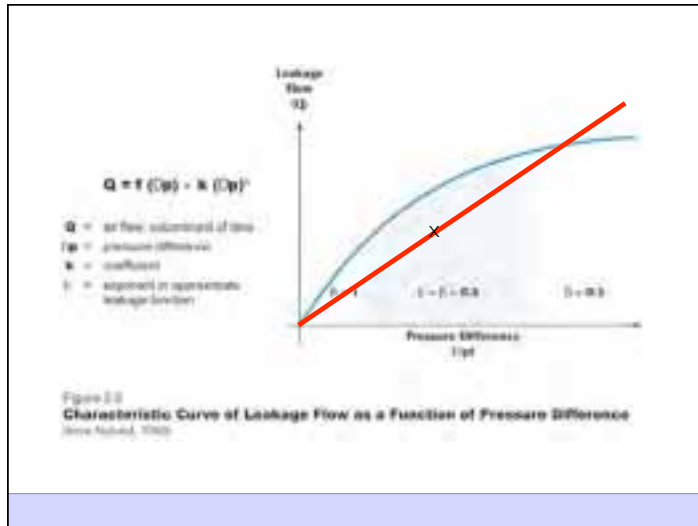
$$Q = C_k \times P \quad \text{Darcy}$$

$$Q = A \times C \times P^{\frac{1}{2}}$$

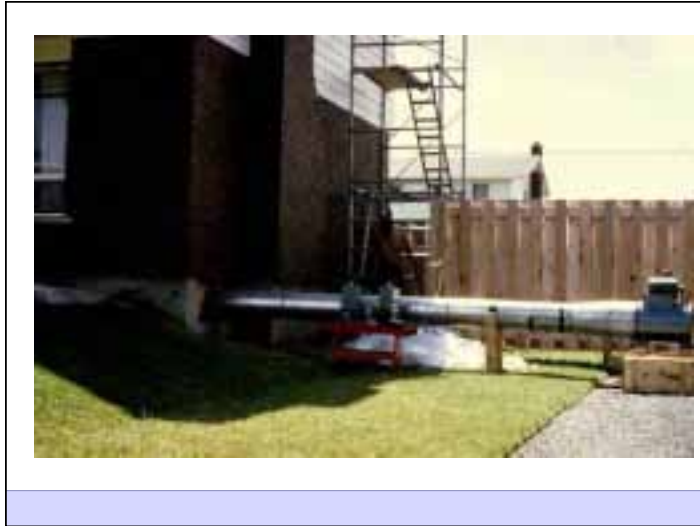
$$Q = C \times P$$

$$Q = A \times C \times P^n \quad \text{Kronval "an engineer"}$$






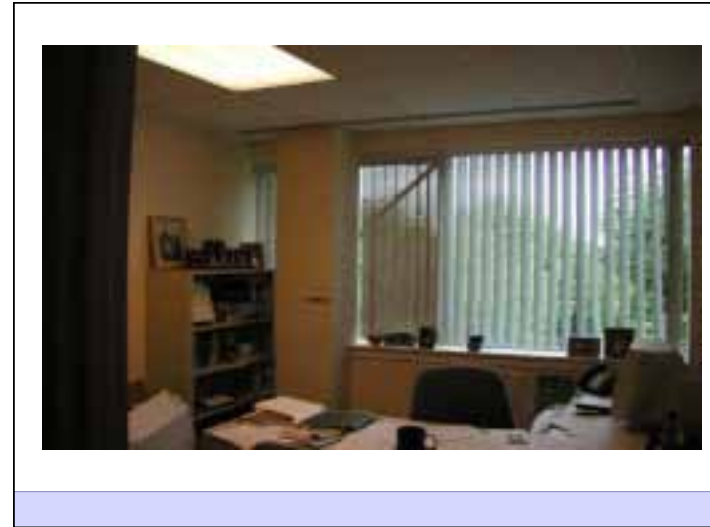
How Tight is Too Tight



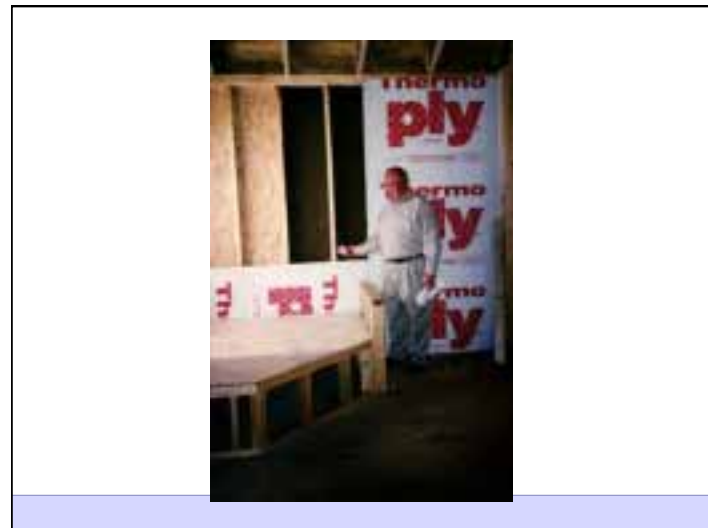




How Tight is Too Tight



How Tight is Too Tight



How Tight is Too Tight



How Tight is Too Tight

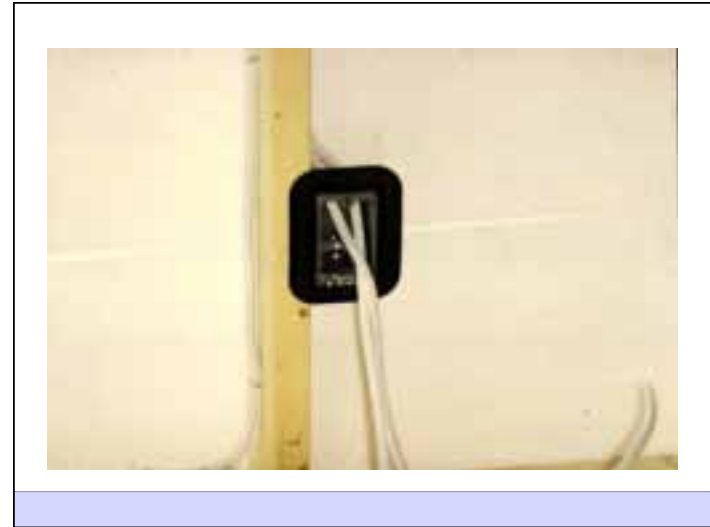




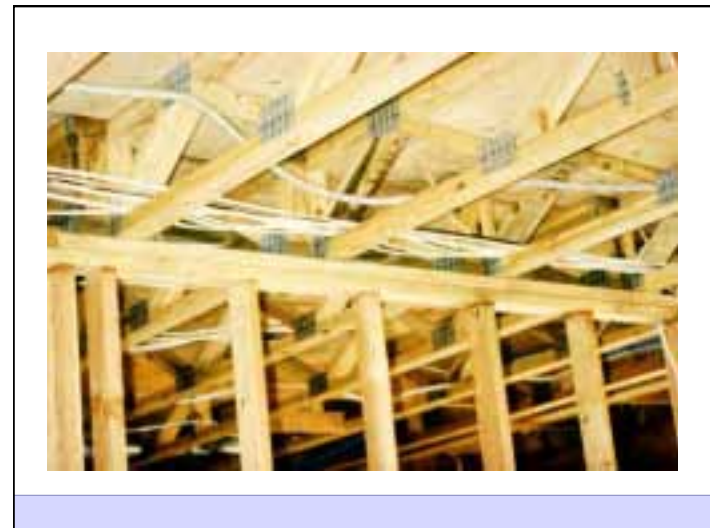
How Tight is Too Tight



How Tight is Too Tight

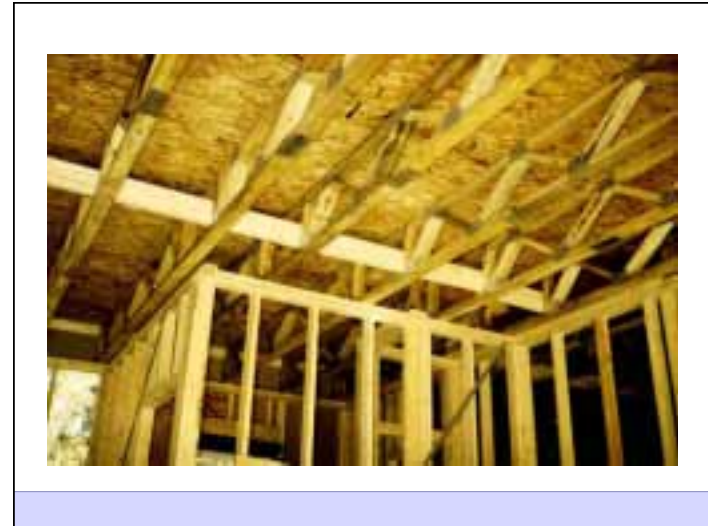


How Tight is Too Tight





How Tight is Too Tight



How Tight is Too Tight



How Tight is Too Tight





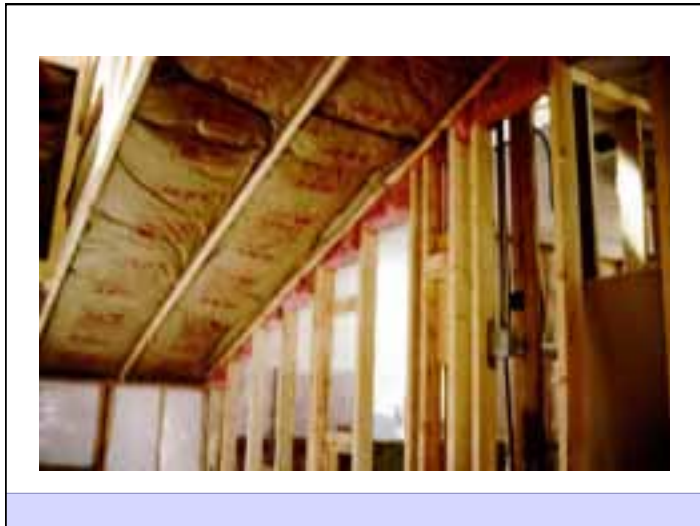
How Tight is Too Tight



How Tight is Too Tight



How Tight is Too Tight



How Tight is Too Tight

