

March 10, 2010

Northeast Sustainable Energy Association Conference

Daniel Bergey

Building Science Corporation

Net Global Warming Due To Insulating Foams



Global Warming

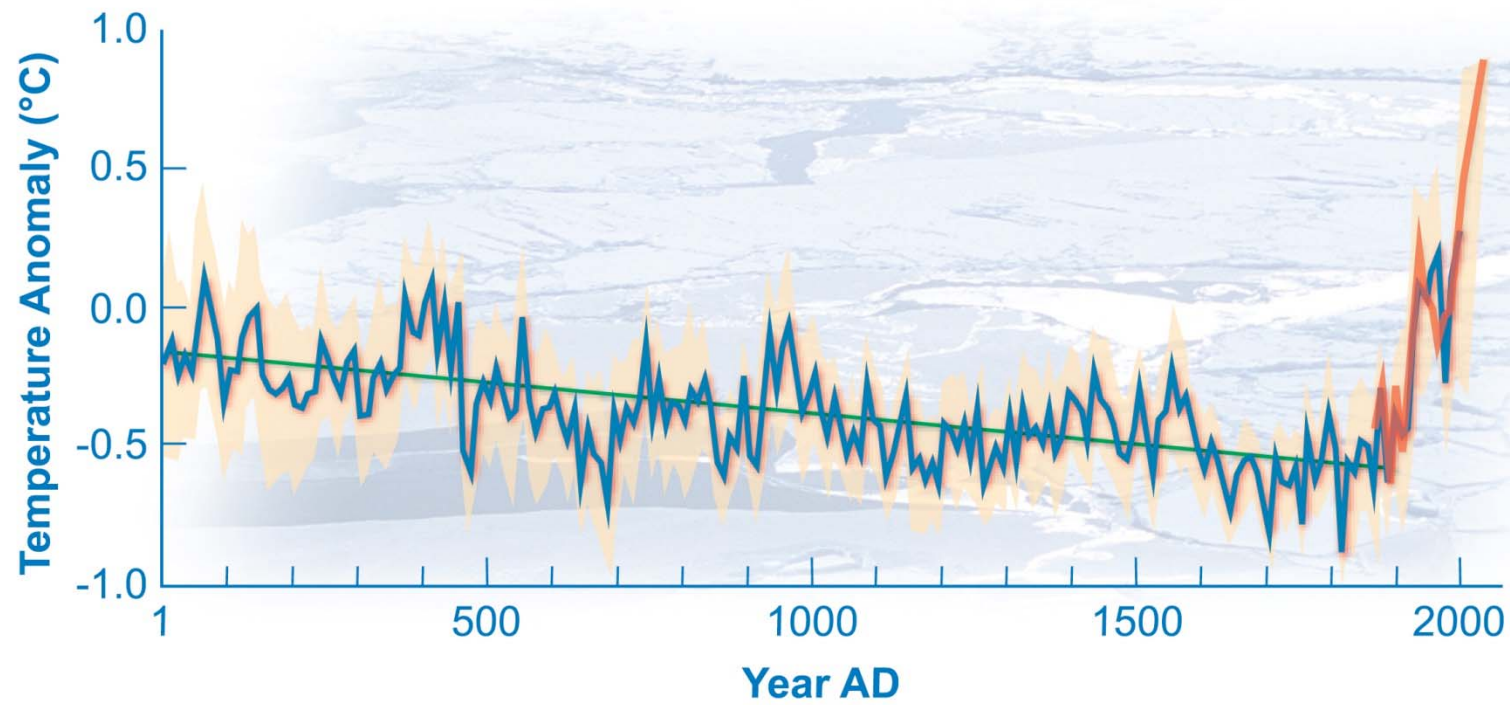
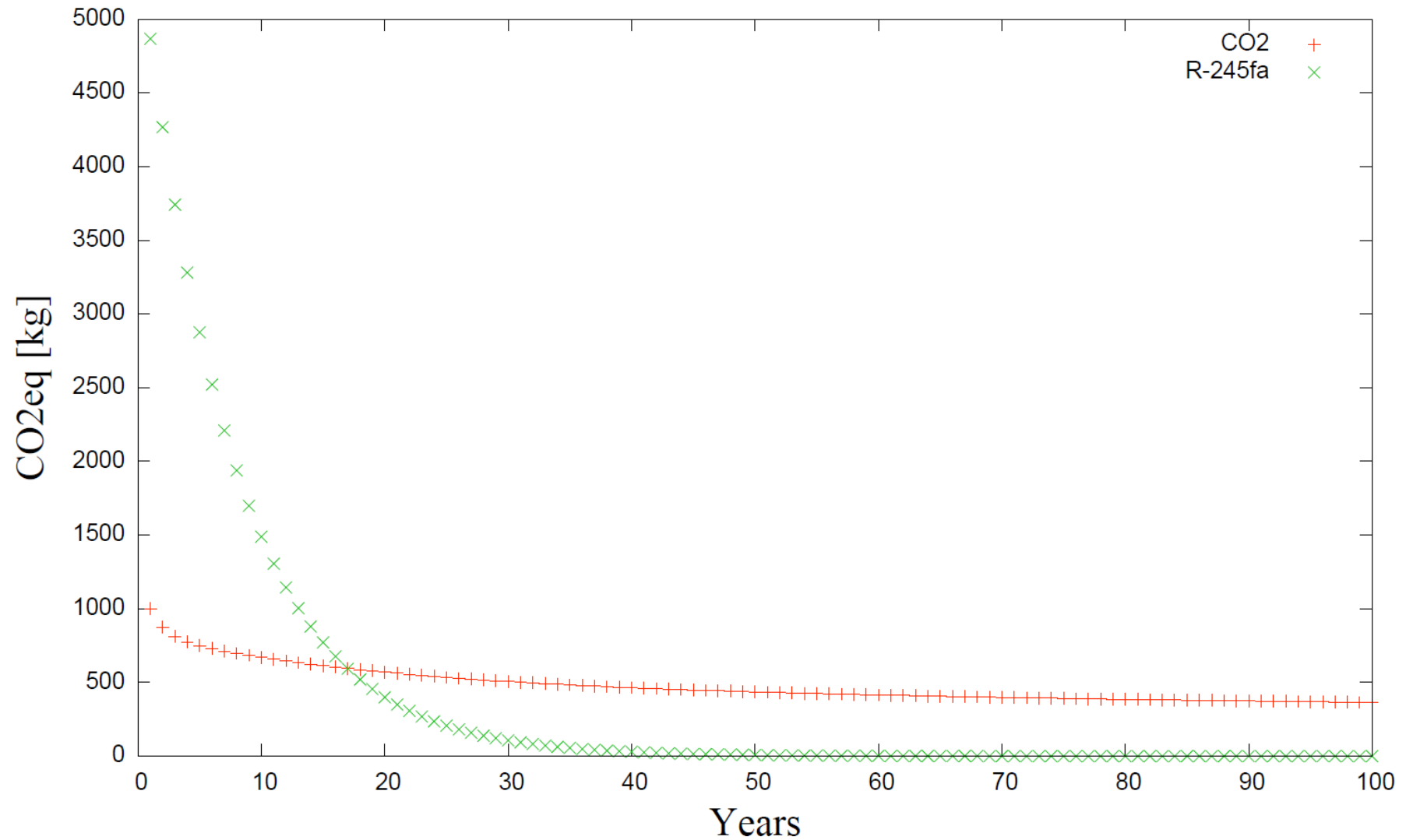
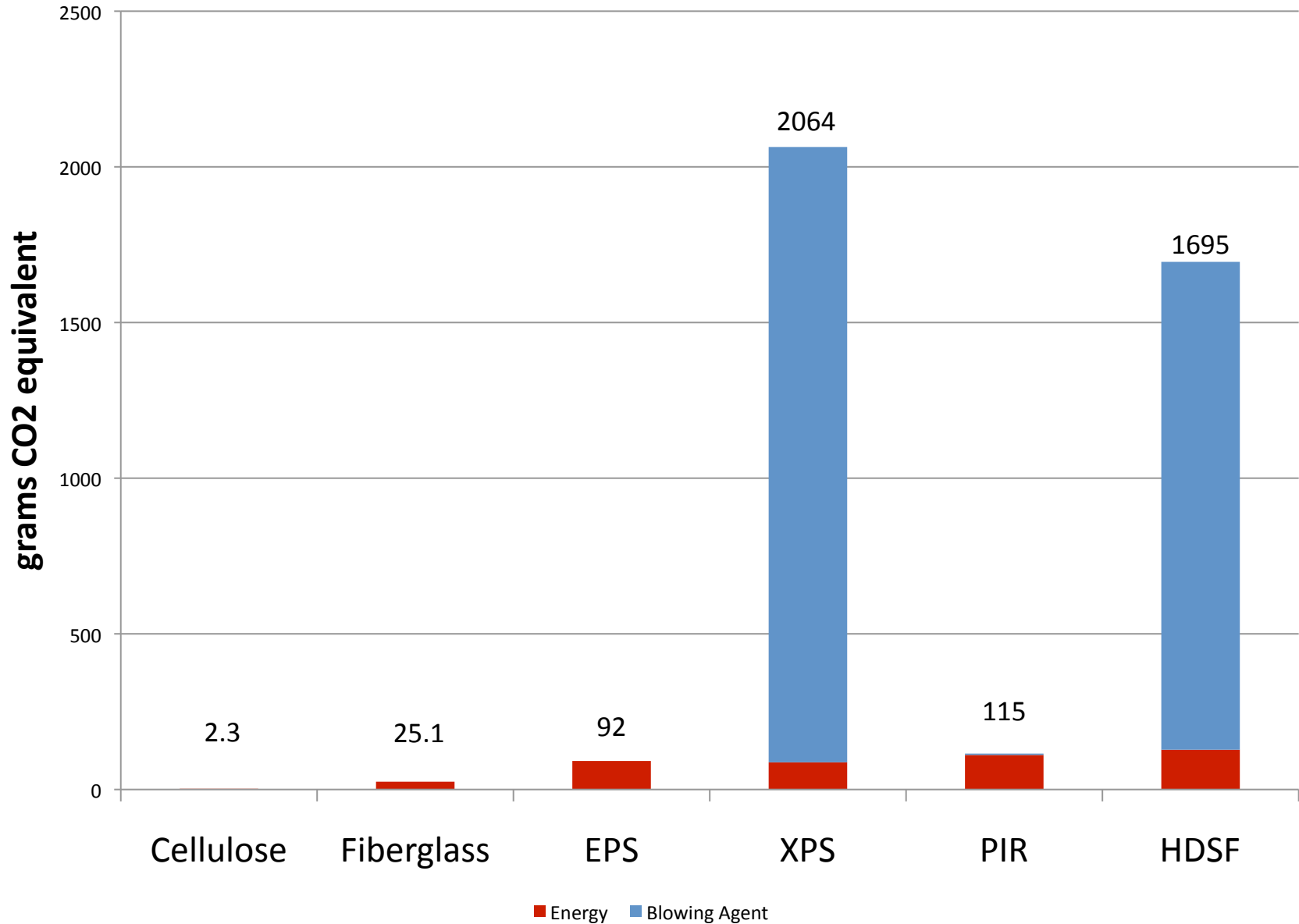


Image by National Center for Atmospheric Research (NCAR)

Global Warming Potential Blowing Agents



Embodied GWP (per sf R)



High-R Wall Assemblies

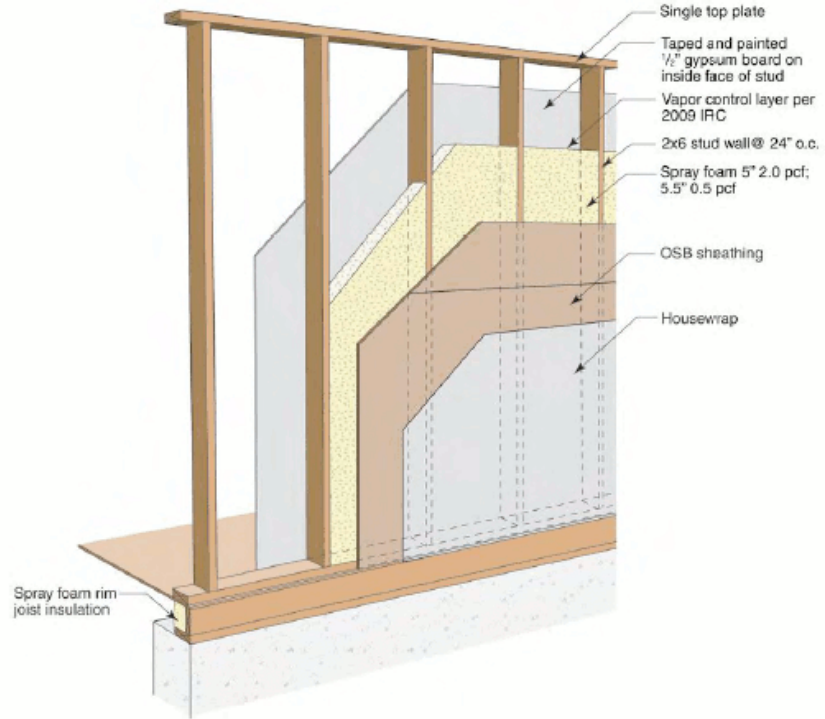
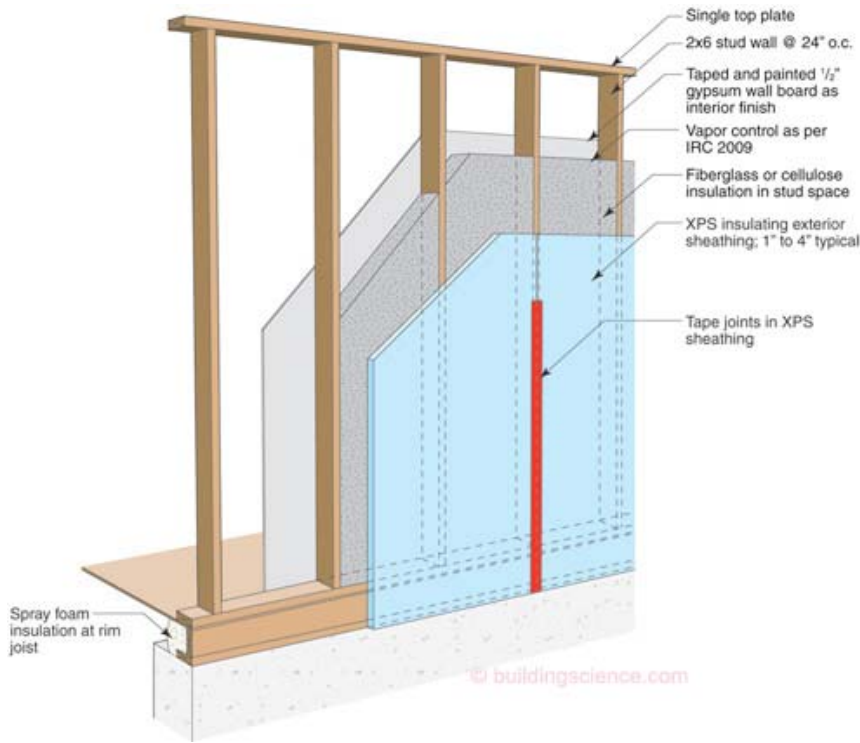
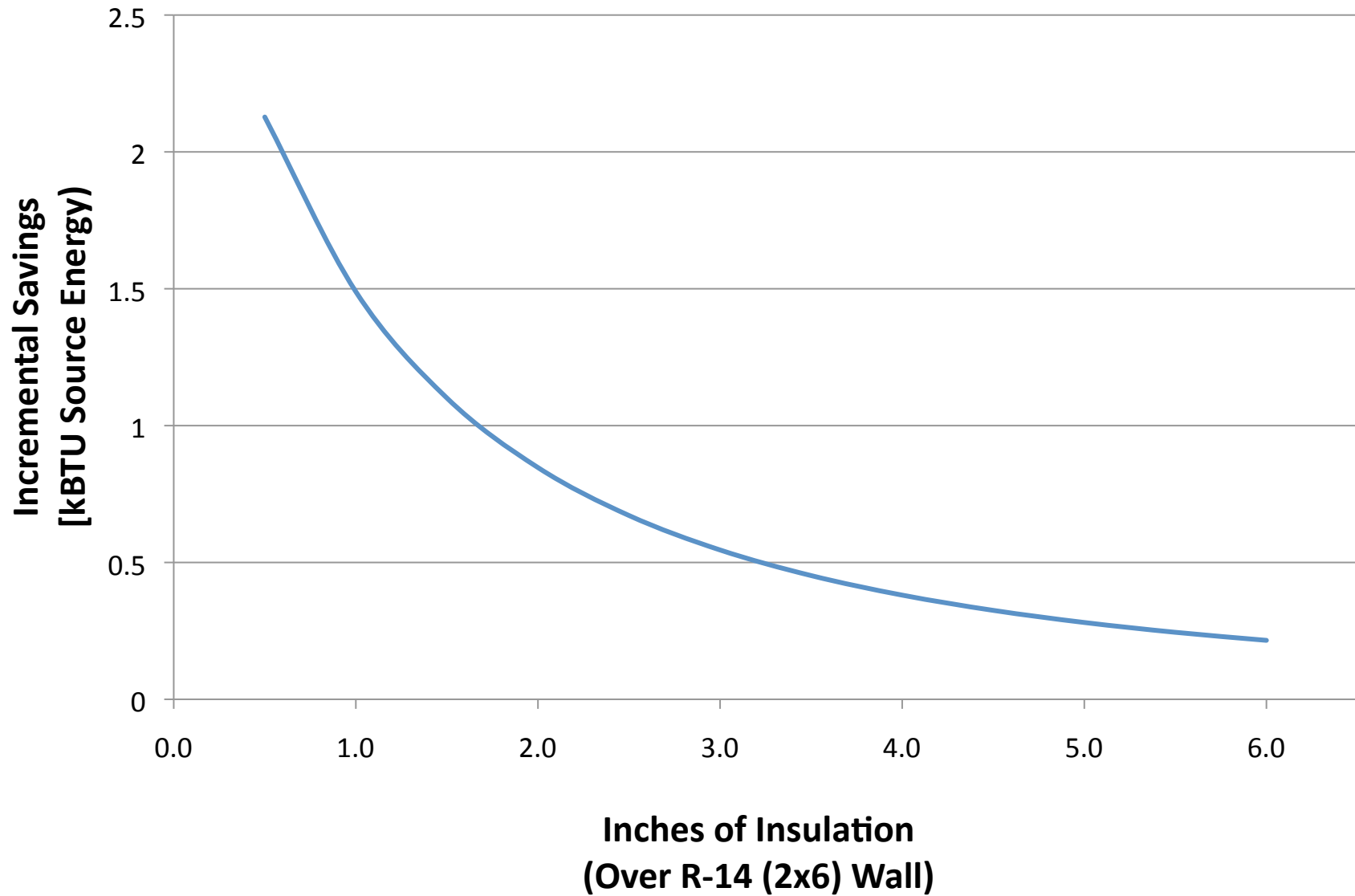


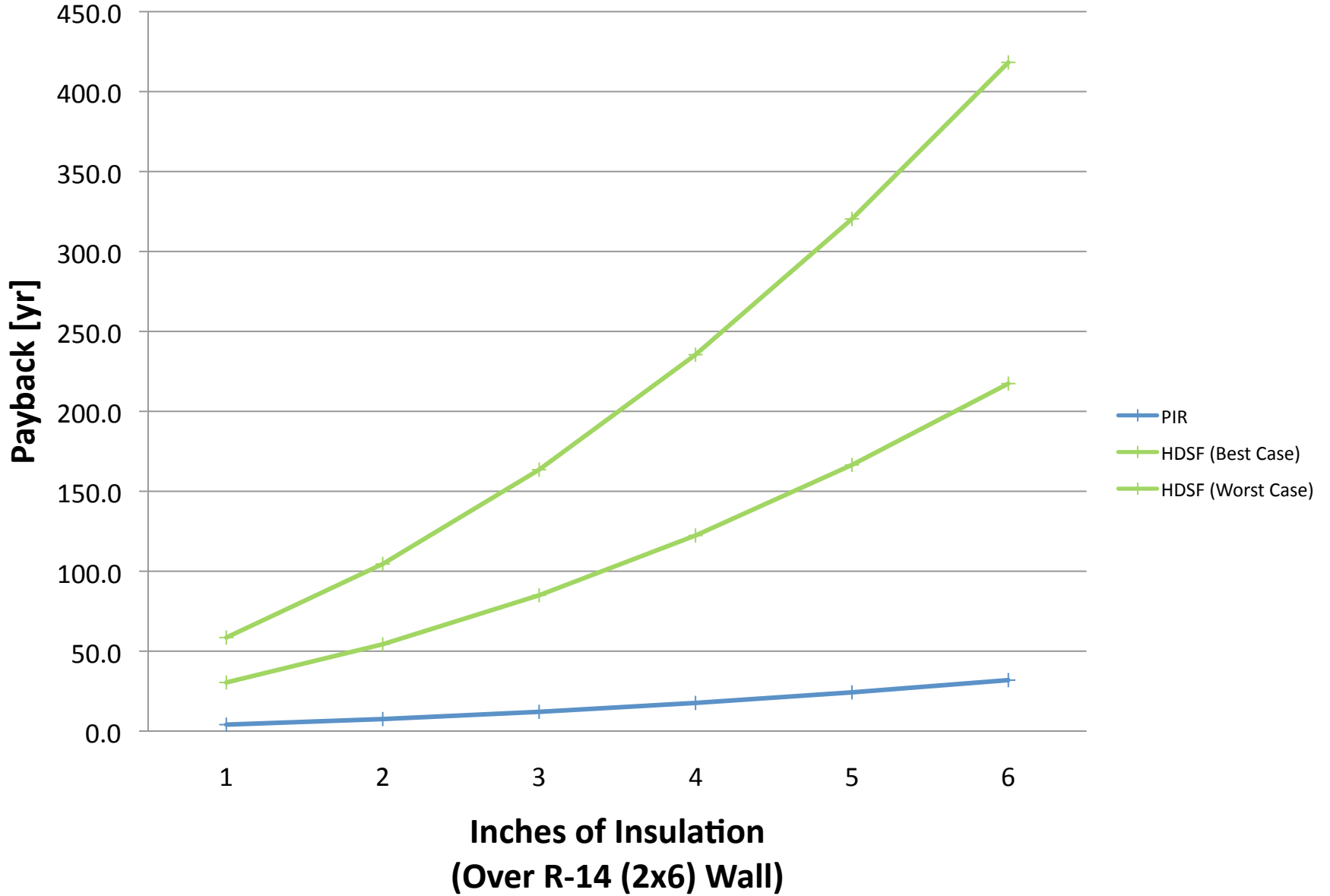
Figure 44 : 2x6 wall construction with spray foam insulation

Images by Building Science Corporation

Incremental Savings



GWP Payback: Boston



- If we only cared about embodied energy, we would use cellulose everywhere
- Durability matters
- Make decisions case by case:
 - Foundations
 - Air Barriers
 - Retrofits
 - Water Resistance
 - Hurricane Resistance