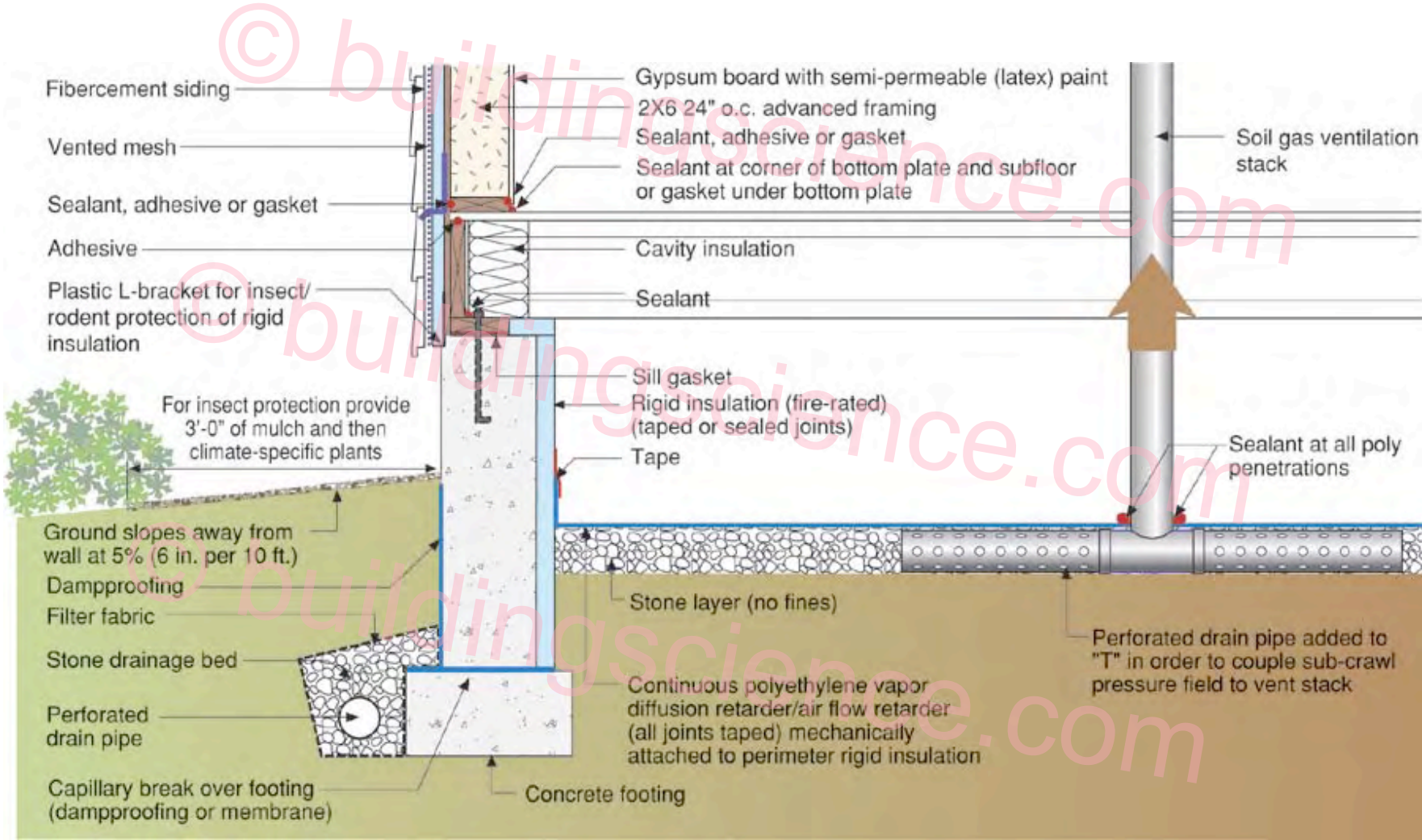


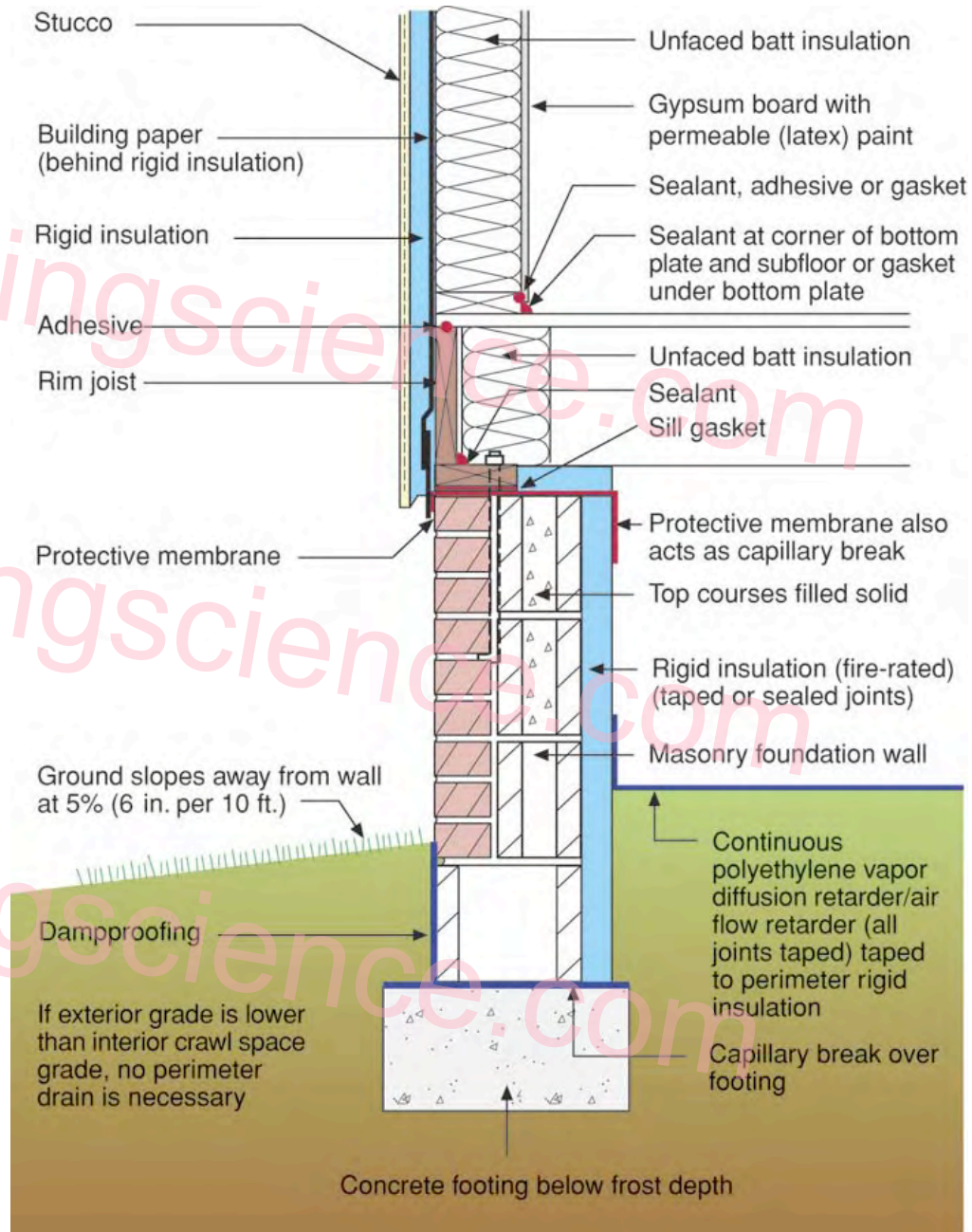
# Conditioned Crawl Detail - No Mold



- **New Construction**
- **Conditioned Crawlspace**

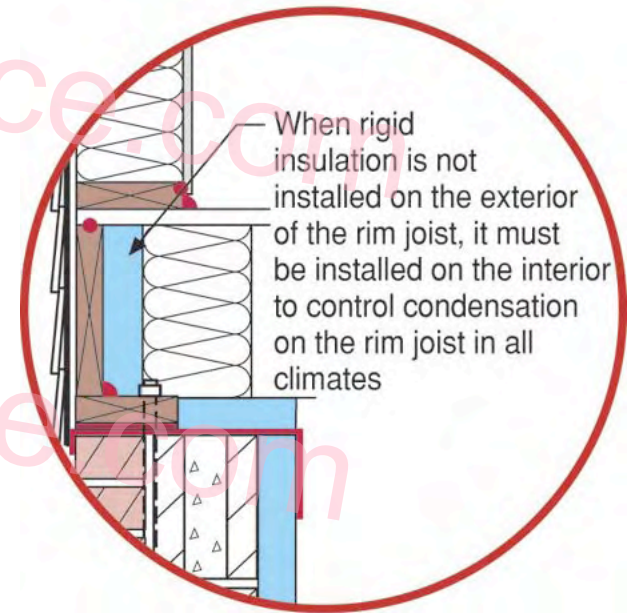
- **Must provide air change with space above or provide conditioned air**

- **Still more energy efficient because more airtight**

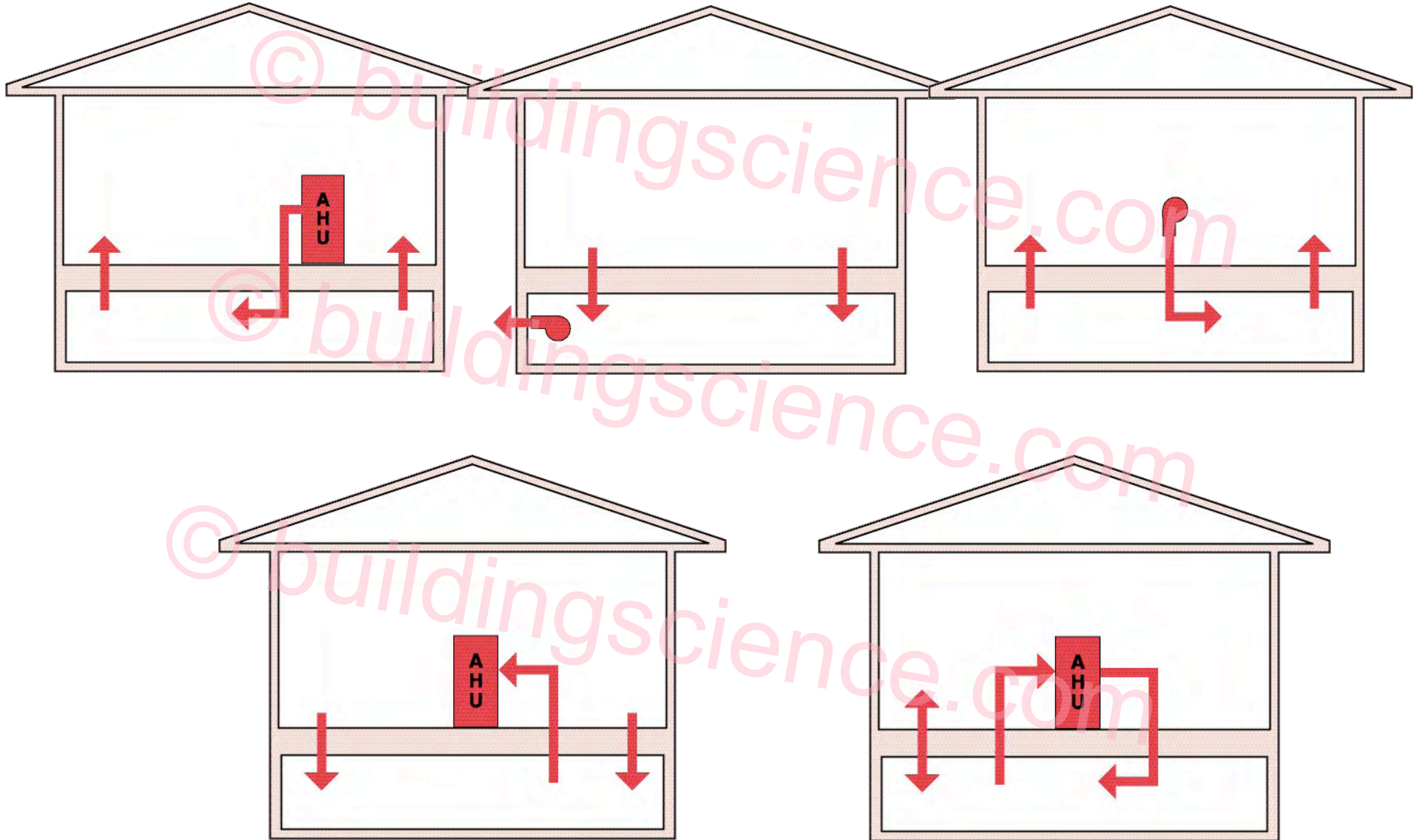




# Don't Forget the Rim Joists



# Conditioning Unvented Crawlspace



















**•Renovating an existing crawlspace**

**•Don't forget to airseal around the sump pump**













•For new or existing construction

•If you don't remove the source of the moisture, you should build wide open crawl space, or essentially a house on piers

•Insulation below floor is difficult to achieve airtightness

•With services below, impossible

