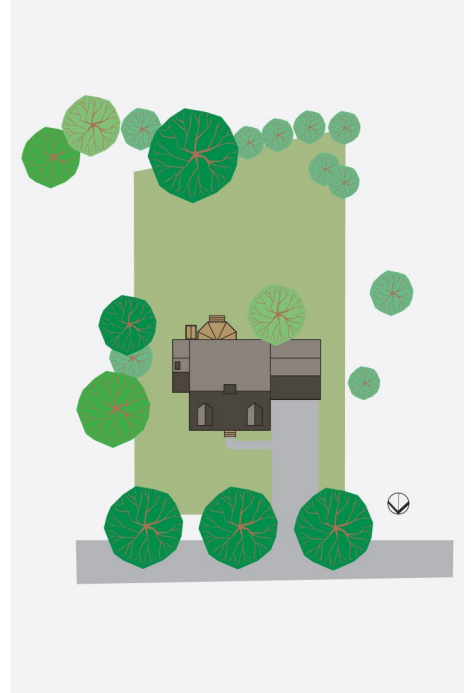
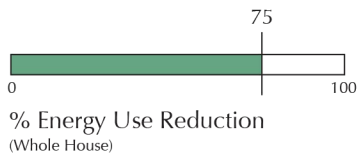




## Concord Cape

Concord, MA  
2009



Designed to fit both the aesthetic of the existing neighborhood and the desires of the homeowners, the Concord Cape combines a traditional façade with high performance building systems. The 4,300 square foot plan has five bedrooms, four full baths, mudroom and an open kitchen, breakfast area, living room space. The conditioned basement provides additional square footage and also houses a two-zone mechanical system. Four inches of rigid insulation on the walls, cavity insulation in the stud bays, high performance triple-glazed windows, a conditioned basement and insulated vented roof all combine to create a super-insulated high performance enclosure. Sited with its rear roof to the south, a 5.75 kW photovoltaic (PV) array provides 100% of the home's electricity. The high performance building systems designed and implemented in the home allow it to operate using 75% less energy than a 2009 code built home.